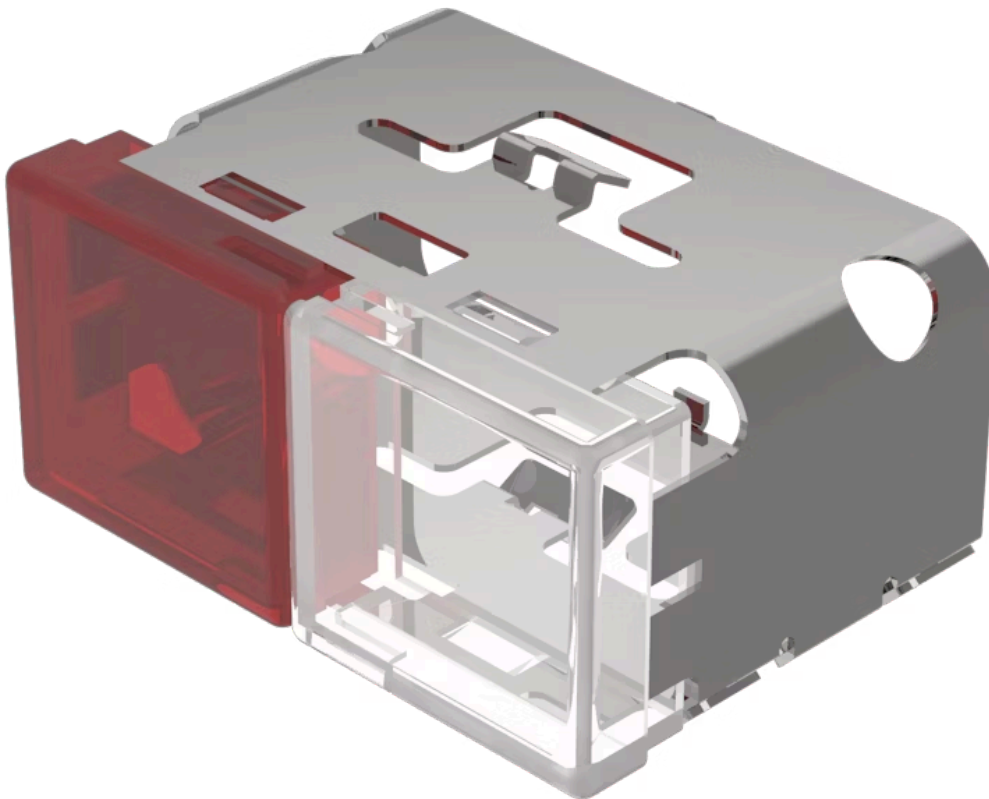


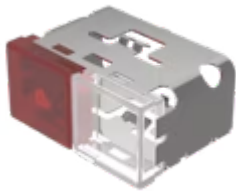
Lens

03-
902.2/9



<https://www.eao.com/p/03-902.2/9>

Your product:



03-902.2/9 Lens

FRONT

Front form: Rectangular

OPERATING-/INDICATION PART

Lens colour: Red-white

Lens material: Plastic

Lens illumination: Illuminated

Lens shape: Flush

Lens optics: translucent

MECHANICAL CHARACTERISTIC

Weight: 0.01 kg

CERTIFICATE

REACH: REACH compliant

RoHS: RoHS compliant

OTHER

Short Description: Lens, 18 mm x 38 mm, Illuminated, Red-white, Flush, Plastic

Dimension: 18 mm x 38 mm

Product attributes: With light barrier, not suitable for film insert