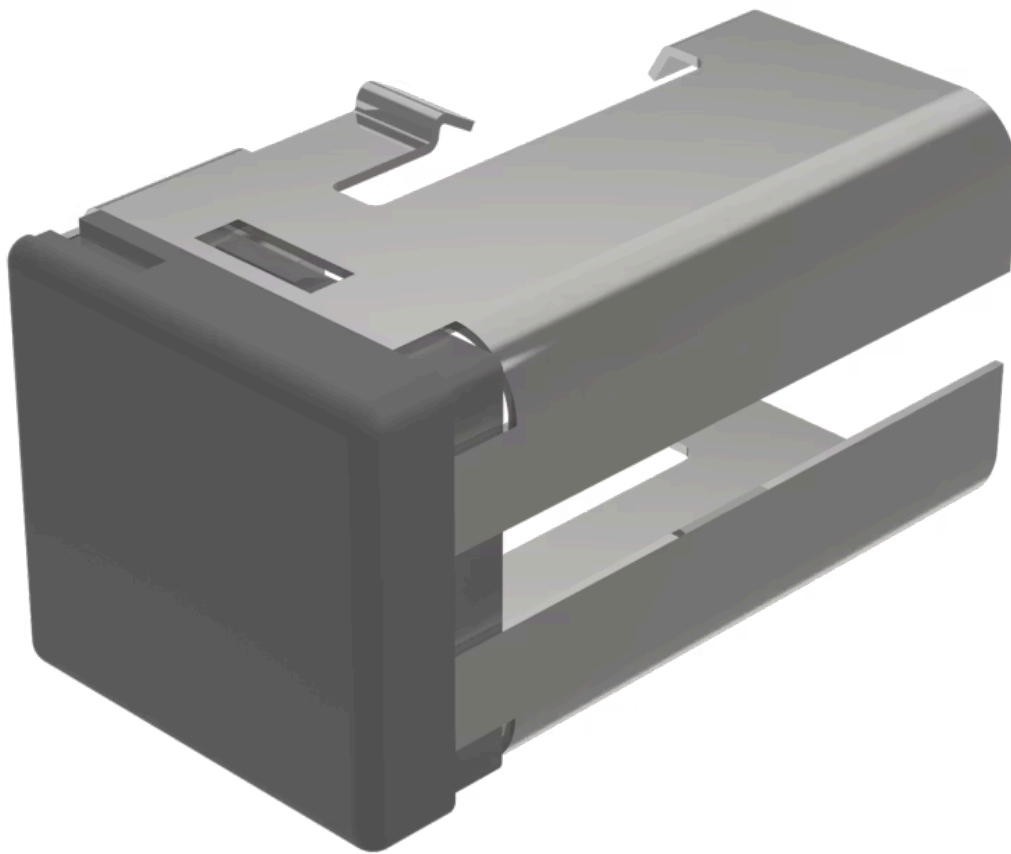


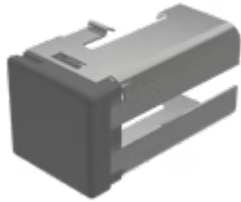
Lens

03-
921.8



<https://www.eao.com/component/03-921.8/en/lens>

Your product:



03-921.8 Lens

PRODUCT RANGE

Product Status: Not Recommended for new design

FRONT

Front form: Rectangular

OPERATING-/INDICATION PART

Lens colour: Grey

Lens material: Plastic

Lens illumination: Non illuminated

Lens shape: Flush

Lens optics: opaque

MECHANICAL CHARACTERISTICS

Weight: 0.004 kg

CERTIFICATE

REACH: REACH compliant

RoHS: RoHS compliant

OTHER

Short Description: Lens, 18 mm x 19 mm, Non illuminated, Grey, Flush, Plastic

Dimension: 18 mm x 19 mm

Hints:

Order two lenses