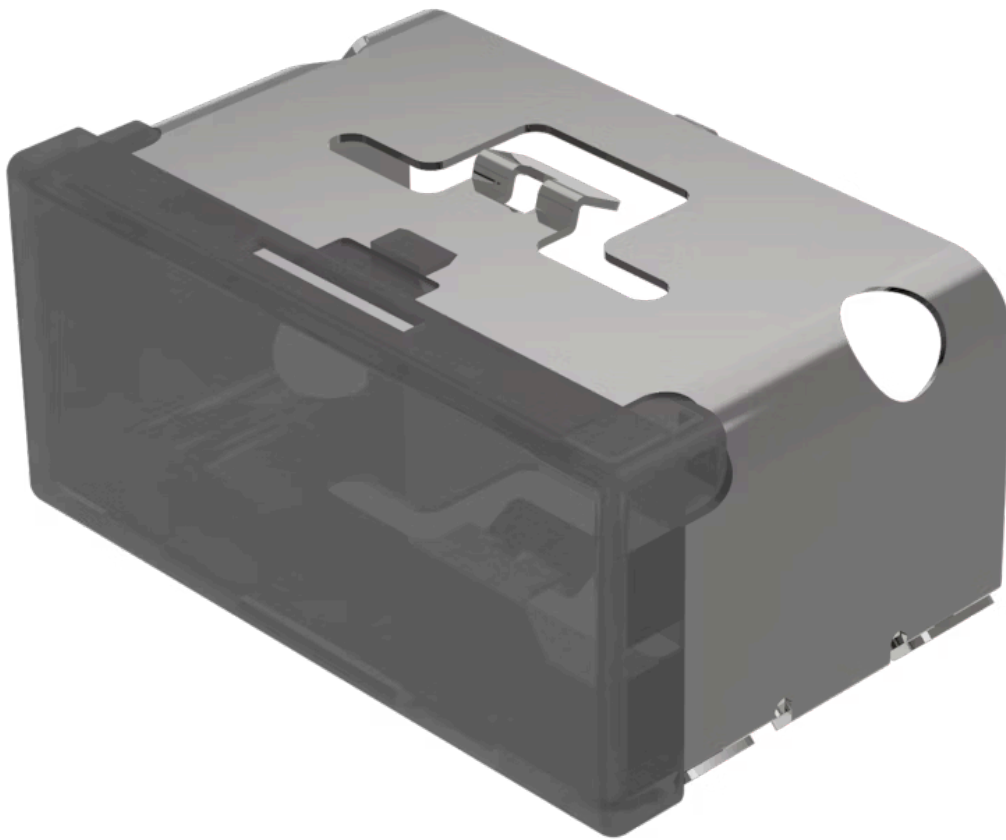


# Lens

03-  
947.1



<https://www.eao.com/p/03-947.1>

Your product:

---



## 03-947.1 Lens

### FRONT

**Front form:** Rectangular

### OPERATING-/INDICATION PART

**Lens colour:** Smokey black

**Lens material:** Plastic

**Lens illumination:** Illuminated

**Lens shape:** Flush

**Lens optics:** transparent

### MECHANICAL CHARACTERISTIC

**Weight:** 0.009 kg

### CERTIFICATE

**REACH:** REACH compliant

**RoHS:** RoHS compliant

### OTHER

**Short Description:** Lens, 18 mm x 38 mm, Illuminated, Smokey black, Flush, Plastic

**Dimension:** 18 mm x 38 mm

**Product attributes:** With black rim (prevents lateral light escape), use holder for film insert