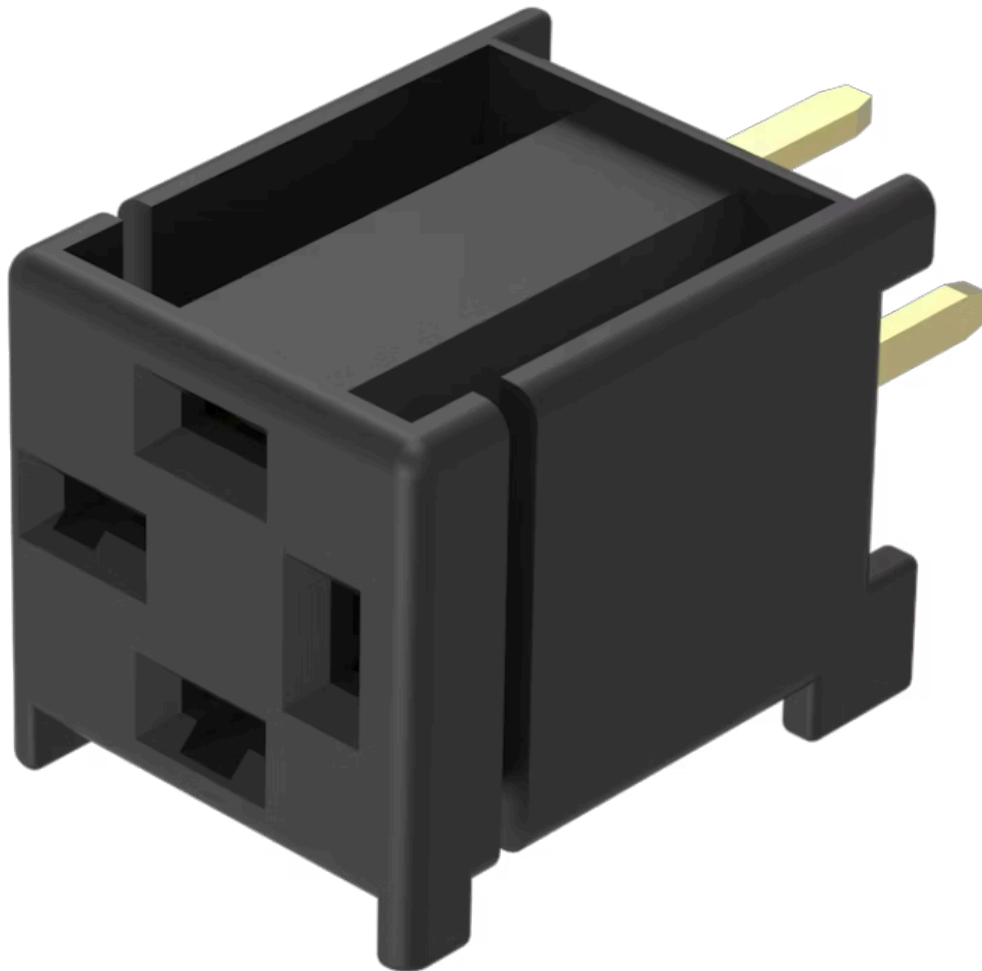


PCB plug-in base

19-940



<https://www.eao.com/p/19-940>

Your product:



19-940 PCB plug-in base

MECHANICAL CHARACTERISTIC

Terminal: PCB terminal

Weight: 0.001 kg

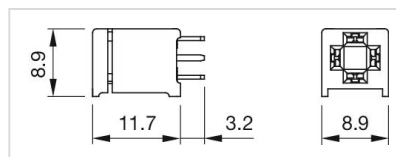
OTHER

Short Description: PCB plug-in base, PCB terminal, Axial

Titel Accessory: PCB plug-in base

Pins: Axial

Dimension drawings:



for Part No. 19-940