

Actuator

31-
423.036



<https://www.eao.com/p/31-423.036>

Your product:



31-423.036 Actuator

FRONT

| | |
|-----------------------|---------------|
| Front dimension: | 24 mm x 18 mm |
| Front form: | Rectangular |
| Front bezel colour: | Black |
| Front bezel material: | Plastic |

MOUNTING

| | |
|-------------------|----------------|
| Design: | Raised |
| Mounting cut-out: | Ø 16 mm |
| Mounting type: | Panel mounting |

OPERATING-/INDICATION PART

| | |
|--------------------|-------------|
| Lens illumination: | Illuminated |
|--------------------|-------------|

ELECTRICAL CHARACTERISTICS

| | |
|--|--|
| Switching voltage and switching current: | 100 mA at 42 VAC/VDC |
| Contacts: | 1 NC / 1 NO |
| Switching rating: | 42 V @ 0,1 A |
| Electric strength: | 2500 VAC, 50 Hz, 1 minute, as per IEC 60512-2-11 between all terminals and earth |
| Protection class: | II |
| Standards: | According to EN/IEC 61058-1 |

MECHANICAL CHARACTERISTIC

| | |
|-----------------------------|--|
| Terminal: | Universal terminal, 2 x 0.5 mm |
| Contact material: | Gold |
| Switching action: | Momentary |
| Switching system: | Low-level element |
| Switching system: | <p>This low-level switching element was designed for switching low powers in electronic circuits. The mechanism assures reliable switching of loads ranging from a few $\mu\text{A}/\mu\text{V}$ up to 100 mA/ 42 VAC/DC.</p> <p>Single-break momentary contact, as normally open or normally closed with 4 independent points of contact. 2 momentary contacts per switching element; combination of normally open and normally closed is possible.</p> <p>Special features are the long life, extremely short rebound time and stable contact resistance.</p> |
| Mechanical lifetime: | 5 Mil. cycles of operation |
| Operating force: | 3 N ... 3.5 N |
| Operating Travel: | ca. 3 mm |
| Tightening torque: | Fixing nut max. 0.5 Nm |
| Wire cross section: | <p>Max. wire diameter 2 wires à 0.8 mm</p> <p>Max. wire cross-section of stranded cable 1 x 0.75 mm²</p> |
| Weight: | 0.007 kg |

AMBIENT CONDITION

| | |
|-------------------------------|--|
| IP Protection: | IP40 front side, IP67 with front protective cap |
| Operating temperature: | – 25 °C ... + 55 °C, mounted as a block, make sure the heat can escape freely |
| Storage temperature: | – 40 °C ... + 85 °C |
| Shock resistance: | 15 g for 11 ms, as per IEC 60512-4-3, IEC 60068-2-27 (Single impacts, semi-sinusoidal) |
| Vibration resistance: | 10 g at 10 Hz...2000 Hz, amplitude 1.5 mm (Sinusoidal), according to DIN EN 60512-4-4, DIN EN 60068-2-6 |
| Climate resistance: | <p>Standard condition according to IEC 60068-2-3</p> <p>Changing condition according to IEC 60068-2-14</p> |

CERTIFICATE

| | |
|----------------------|---|
| Conformities: | CE, UKCA, 2011 / 65 / EC (RoHS), 2014 / 35 / EU (LVD) |
| REACH: | REACH compliant |
| RoHS: | RoHS compliant |

OTHER

Short Description:

Actuator, Ø 16 mm, 24 mm x 18 mm, Illuminated, Rectangular, Black, Plastic, 1 NC / 1 NO, Momentary, Universal terminal, 2 x 0.5 mm

Internal size:

21,5 mm x 15,3 mm

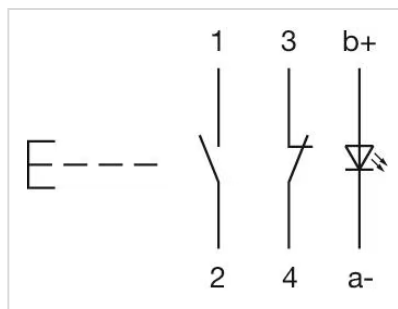
Housing colour:

Black

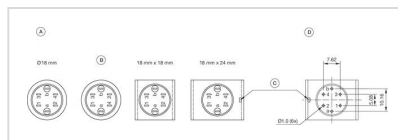
max. number of switching elements:

1

Wiring diagrams:

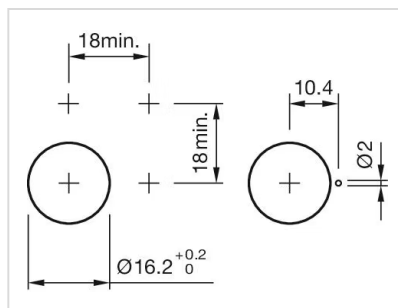


Component layouts:

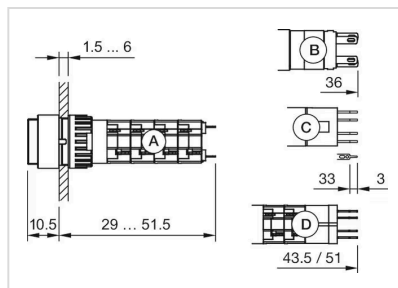


A = Terminals (rear side)
B = Diode block
C = Anti twist device only 18 mm x 24 mm
D = Drilling plan (component side)

Mounting cut-outs:



Dimension drawings:



A = Solder terminal
B = Plug-in terminal 2.8 mm x 0.5 mm
C = Universal terminal 2.0 mm x 0.5 mm
D = Universal-Solder terminal