

Actuator

31-
473.036



<https://www.eao.com/p/31-473.036>

Your product:



31-473.036 Actuator

PRODUCT RANGE

Product Status: Not Recommended for new design

FRONT

Front dimension: Ø 18 mm

Front form: Round

Front bezel colour: Black

Front bezel material: Plastic

MOUNTING

Design: Raised

Mounting cut-out: Ø 16 mm

Mounting type: Panel mounting

OPERATING-/INDICATION PART

Lens illumination: Illuminated

ELECTRICAL CHARACTERISTICS

Contacts: 1 NC / 1 NO

Switching rating: 42 V @ 0,1 A

Standards: According to EN/IEC 61058-1

MECHANICAL CHARACTERISTICS

| | |
|-----------------------------|---|
| Terminal: | Universal terminal, 2 x 0.5 mm |
| Contact material: | Gold |
| Switching action: | Maintained |
| Switching system: | Low-level element |
| Mechanical lifetime: | 1 Mil. cycles of operation |
| Operating force: | 3 N ... 3.5 N |
| Operating Travel: | ca. 3 mm |
| Tightening torque: | Fixing nut max. 0.5 Nm |
| Wire cross section: | Max. wire diameter 2 wires à 0.8 mm Max. wire cross-section of stranded cable 1 x 0.75 mm ² |
| Weight: | 0.007 kg |

AMBIENT CONDITION

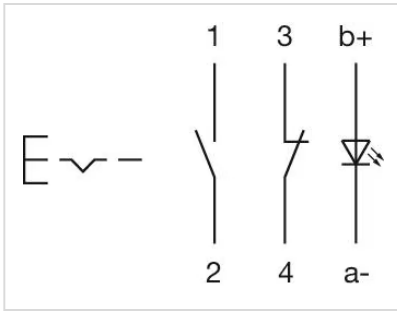
| | |
|-------------------------------|---|
| IP Protection: | IP40 front side, IP67 with front protective cap |
| Operating temperature: | – 25 °C ... + 55 °C, mounted as a block, make sure the heat can escape freely |
| Storage temperature: | – 40 °C ... + 85 °C |
| Climate resistance: | Standard condition according to IEC 60068-2-3 Changing condition according to IEC 60068-2-14 |

CERTIFICATE

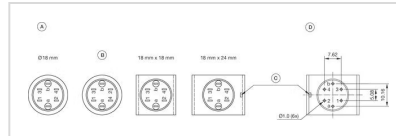
| | |
|----------------------|---|
| Conformities: | CE, UKCA, 2011 / 65 / EC (RoHS), 2014 / 35 / EU (LVD) |
| REACH: | REACH compliant |
| RoHS: | RoHS compliant |

OTHER

| | |
|---|---|
| Short Description: | Actuator, Ø 16 mm, Ø 18 mm, Illuminated, Round, Black, Plastic, 1 NC / 1 NO, Maintained, Universal terminal, 2 x 0.5 mm |
| Internal size: | Ø 15,8 mm |
| Housing colour: | Black |
| max. number of switching elements: | 1 |
| Wiring diagrams: | |

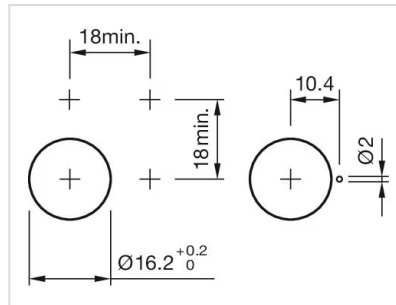


Component layouts:

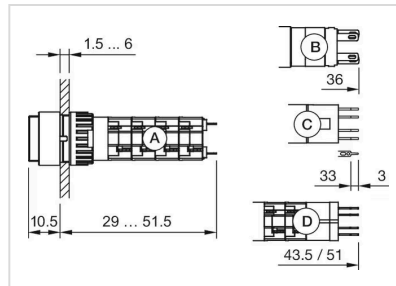


A = Terminals (rear side)
 B = Diode block
 C = Anti twist device only 18 mm x 24 mm
 D = Drilling plan (component side)

Mounting cut-outs:



Dimension drawings:



A = Solder terminal
 B = Plug-in terminal 2.8 mm x 0.5 mm
 C = Universal terminal 2.0 mm x 0.5 mm
 D = Universal-Solder terminal