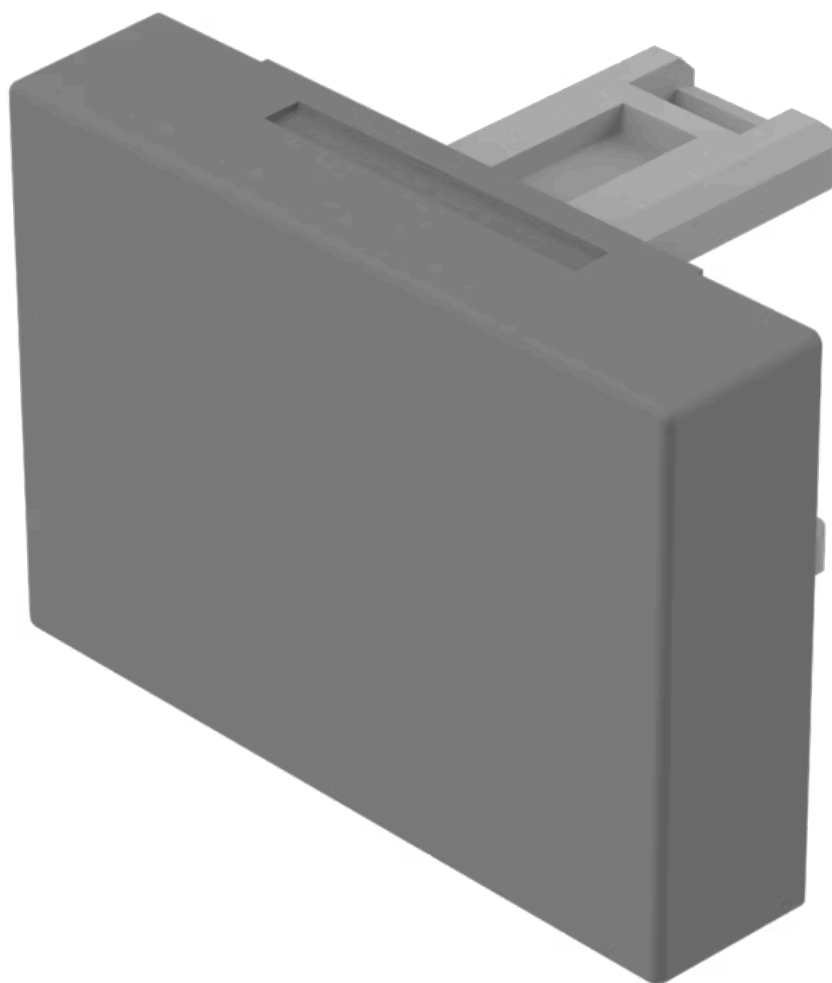


Lens

31-
901.8



<https://www.eao.com/p/31-901.8>

Your product:



31-901.8 Lens

FRONT

Front form: Rectangular

OPERATING-/INDICATION PART

Lens colour: Grey

Lens material: Plastic

Lens illumination: Non illuminated

Lens shape: Flush

Lens optics: opaque

MECHANICAL CHARACTERISTIC

Weight: 0.001 kg

CERTIFICATE

REACH: REACH compliant

RoHS: RoHS compliant

OTHER

Short Description: Lens, 21.5 mm x 15.3 mm, Non illuminated, Grey, Flush, Plastic

Dimension: 21.5 mm x 15.3 mm