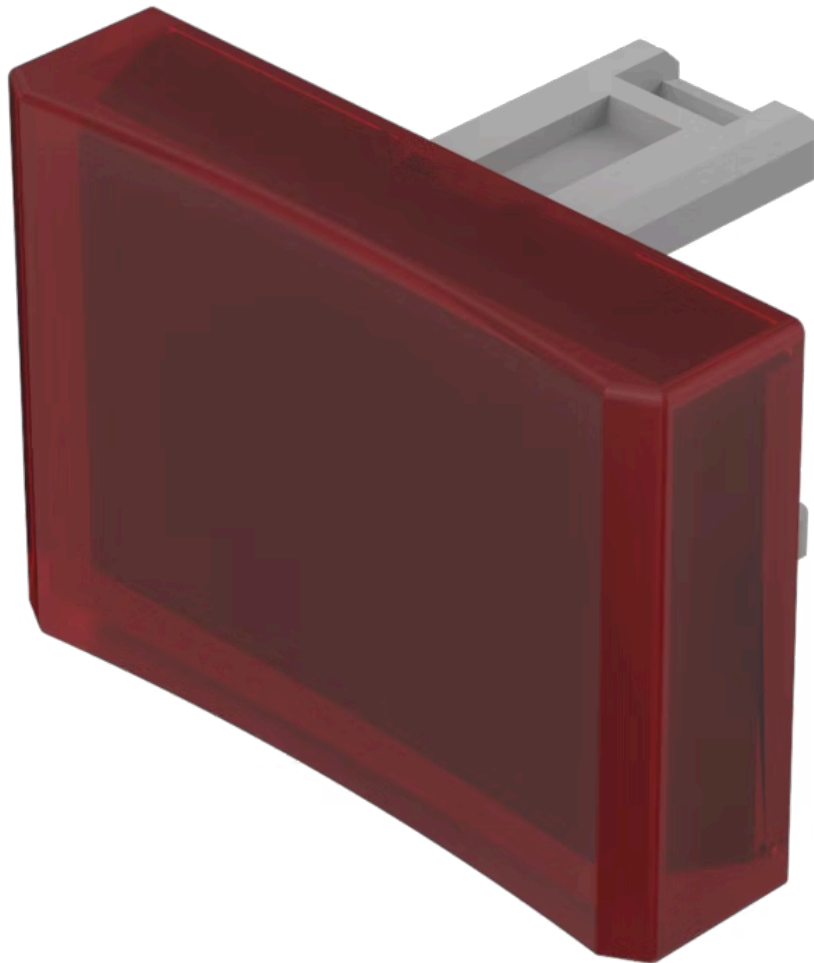


Lens

31-
902.2



<https://www.eao.com/p/31-902.2>

Your product:



31-902.2 Lens

FRONT

Front form: Rectangular

OPERATING-/INDICATION PART

Lens colour: Red

Lens material: Plastic

Lens illumination: Illuminated

Lens shape: Concave

Lens optics: translucent

MECHANICAL CHARACTERISTIC

Weight: 0.001 kg

CERTIFICATE

REACH: REACH compliant

RoHS: RoHS compliant

OTHER

Short Description: Lens, 21.5 mm x 15.3 mm, Illuminated, Red, Concave, Plastic

Dimension: 21.5 mm x 15.3 mm

Product attributes: Not recommended for film insert