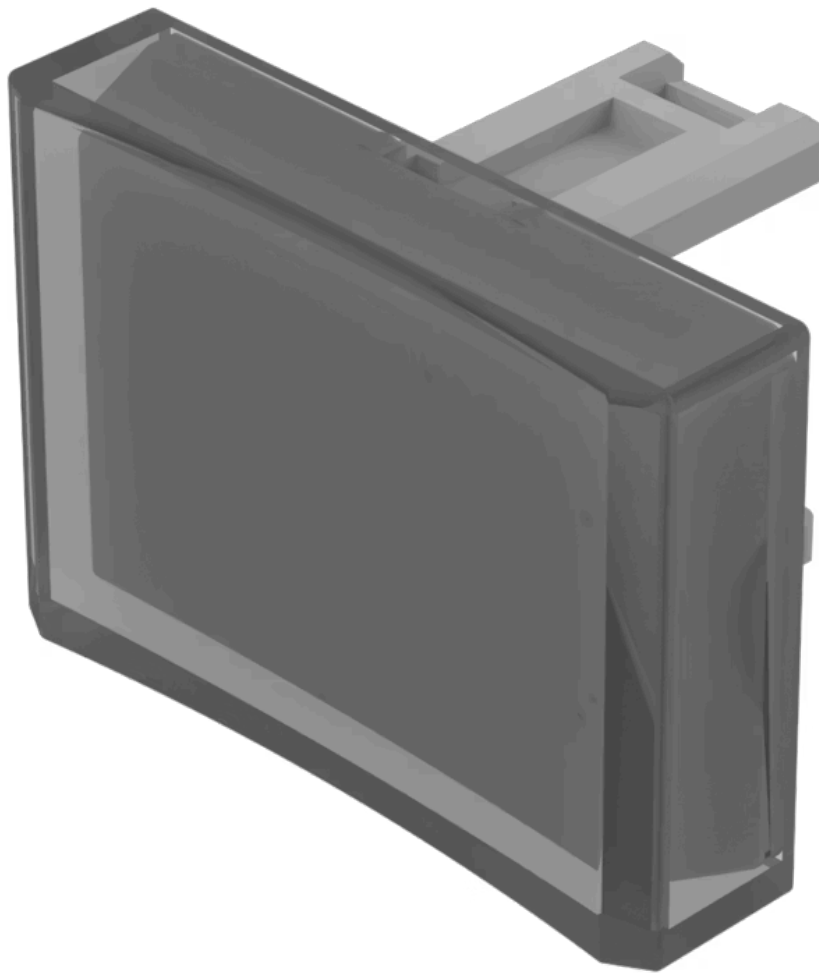


Lens

31-
902.9



<https://www.eao.com/component/31-902.9/en/lens>

Your product:



31-902.9 Lens

PRODUCT RANGE

Product Status: Not Recommended for new design

FRONT

Front form: Rectangular

OPERATING-/INDICATION PART

Lens colour: White

Lens material: Plastic

Lens illumination: Illuminated

Lens shape: Concave

Lens optics: translucent

MECHANICAL CHARACTERISTICS

Weight: 0.001 kg

CERTIFICATE

REACH: REACH compliant

RoHS: RoHS compliant

OTHER

Short Description: Lens, 21.5 mm x 15.3 mm, Illuminated, White, Concave, Plastic

Dimension: 21.5 mm x 15.3 mm

Product attributes:

Not recommended for film insert