

PCB plug-in base

31-942

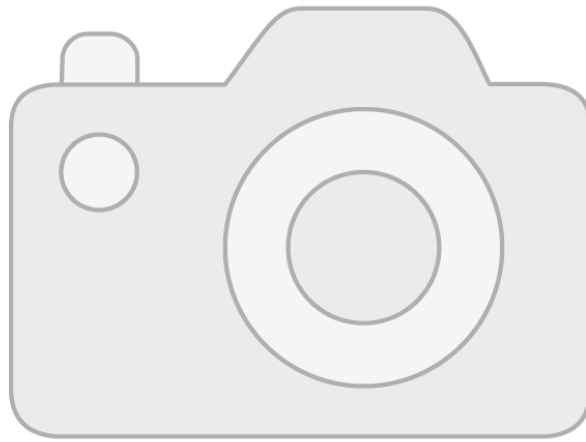


Image not available



<https://www.eao.com/p/31-942>

Your product:



Image not available

31-942

PCB plug-in base

PRODUCT RANGE

Product Status: Not Recommended for new design

MECHANICAL CHARACTERISTICS

Terminal: PCB terminal

Weight: 0.002 kg

OTHER

Short Description: PCB plug-in base, Plastic, heat-resistant and self-extinguishing, PCB terminal, Axial

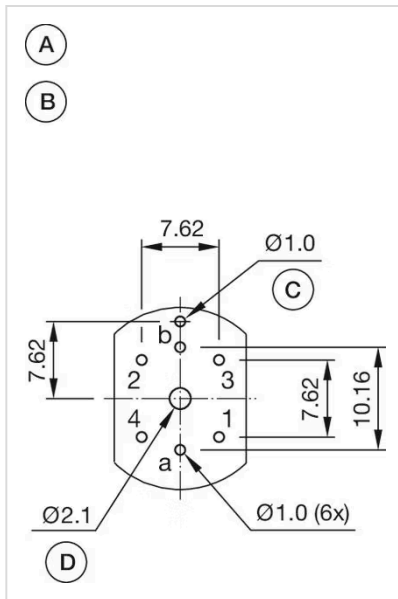
Titel Accessory: PCB plug-in base

Material: Plastic, heat-resistant and self-extinguishing

Product attributes: For snap-action switching element 2.8 mm

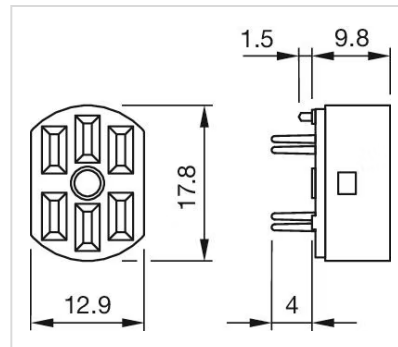
Pins: Axial

Component layouts:



A = Axial socket
 B = Drilling-/occupancy plan (component side)
 C = non-metallic
 D = for central mounting with M2 screw, if desired

Dimension drawings:



for Part No. 31-942