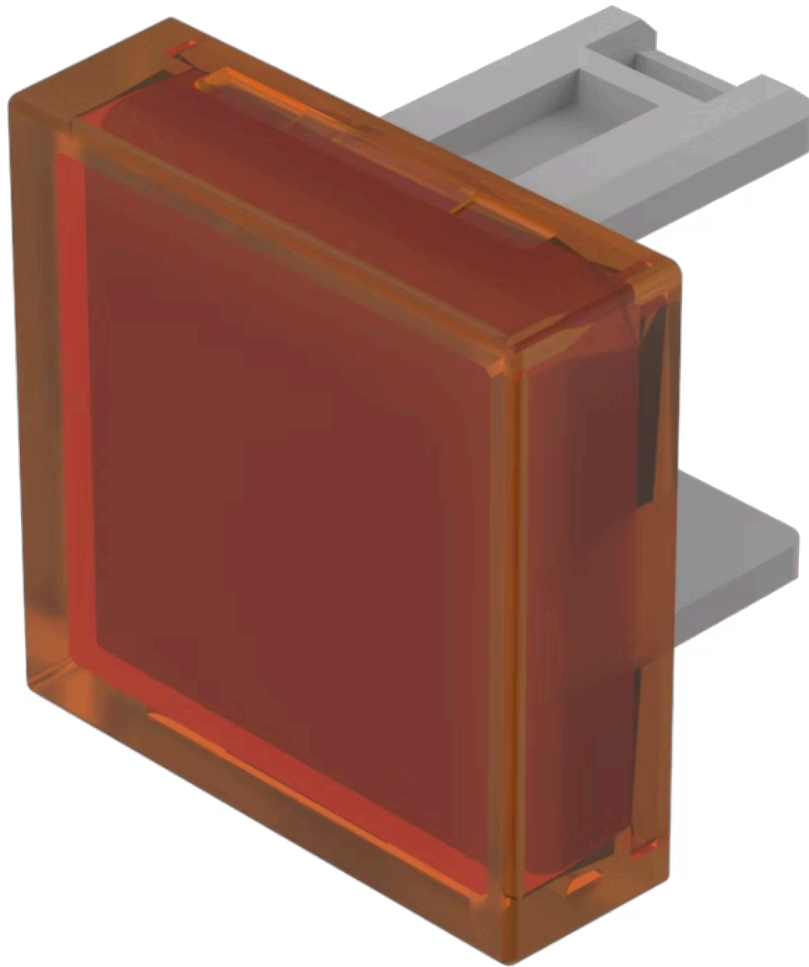


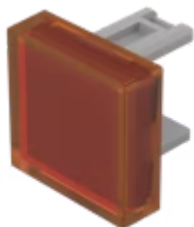
Lens

31-
951.3



<https://eao.com/p/31-951.3>

Your product:



31-951.3 Lens

FRONT

Front form: square

OPERATING-/INDICATION PART

Lens colour: Orange

Lens material: Plastic

Lens illumination: illuminative

Lens shape: flush

Lens optics: translucent

MECHANICAL CHARACTERISTIC

Weight: 0.001 kg

CERTIFICATE

REACH: REACH compliant

RoHS: RoHS compliant

OTHER

Short Description: Lens, 15.3 mm x 15.3 mm, illuminative, Orange, flush, Plastic

Dimension: 15.3 mm x 15.3 mm

Product attributes: Not recommended for film insert