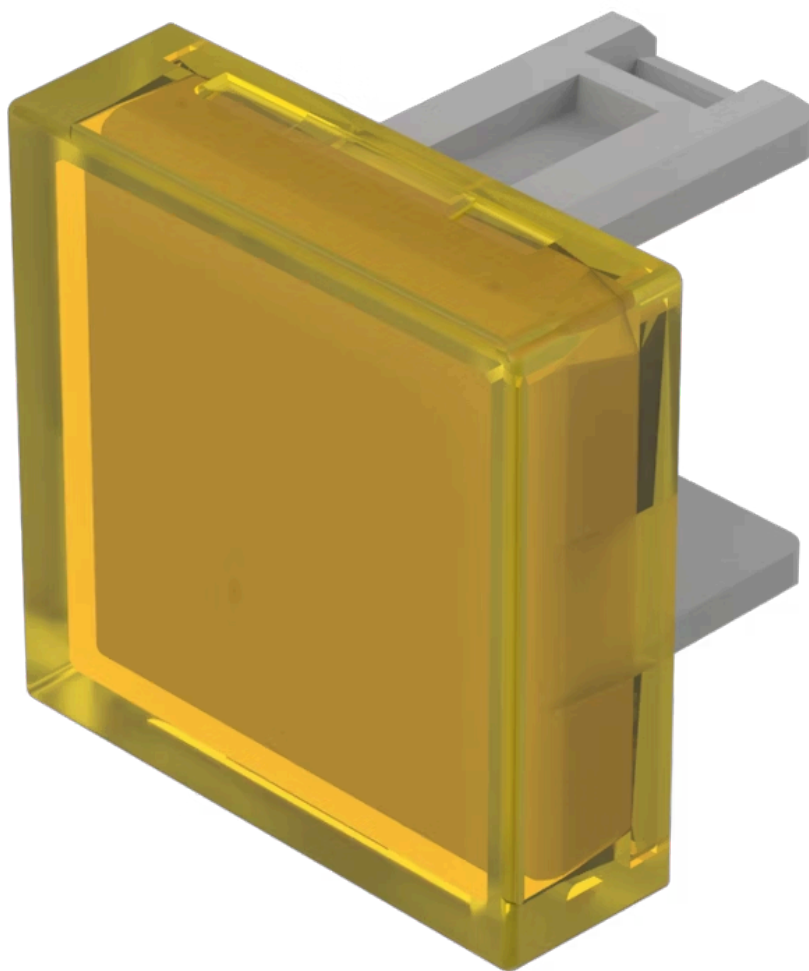


# Lens

31-  
951.4



<https://www.eao.com/p/31-951.4>

Your product:

---



# 31-951.4 Lens

## FRONT

Front form: Square

## OPERATING-/INDICATION PART

Lens colour: Yellow

Lens material: Plastic

Lens illumination: Illuminated

Lens shape: Flush

Lens optics: translucent

## MECHANICAL CHARATERISTIC

Weight: 0.001 kg

## CERTIFICATE

REACH: REACH compliant

RoHS: RoHS compliant

## OTHER

Short Description: Lens, 15.3 mm x 15.3 mm, Illuminated, Yellow, Flush, Plastic

Dimension: 15.3 mm x 15.3 mm

Product attributes: Not recommended for film insert