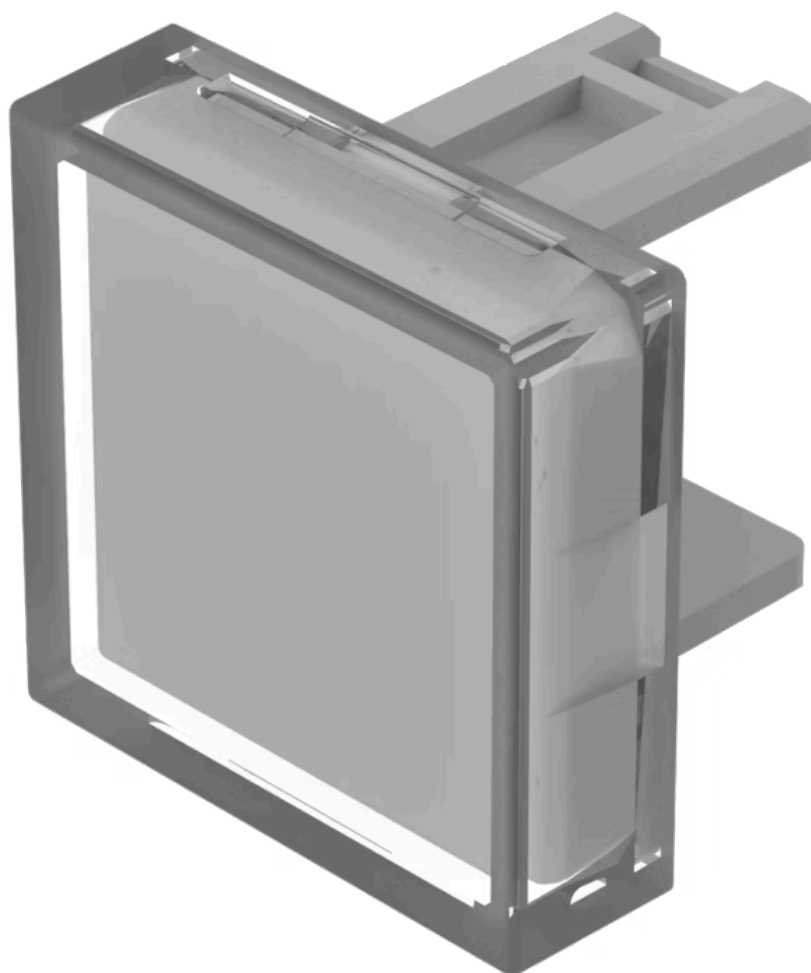


# Lens

31-  
951.9



<https://www.eao.com/p/31-951.9>

Your product:

---



## 31-951.9 Lens

### FRONT

**Front form:** Square

### OPERATING-/INDICATION PART

**Lens colour:** White

**Lens material:** Plastic

**Lens illumination:** Illuminated

**Lens shape:** Flush

**Lens optics:** translucent

### MECHANICAL CHARACTERISTIC

**Weight:** 0.001 kg

### CERTIFICATE

**REACH:** REACH compliant

**RoHS:** RoHS compliant

### OTHER

**Short Description:** Lens, 15.3 mm x 15.3 mm, Illuminated, White, Flush, Plastic

**Dimension:** 15.3 mm x 15.3 mm

**Product attributes:** Not recommended for film insert