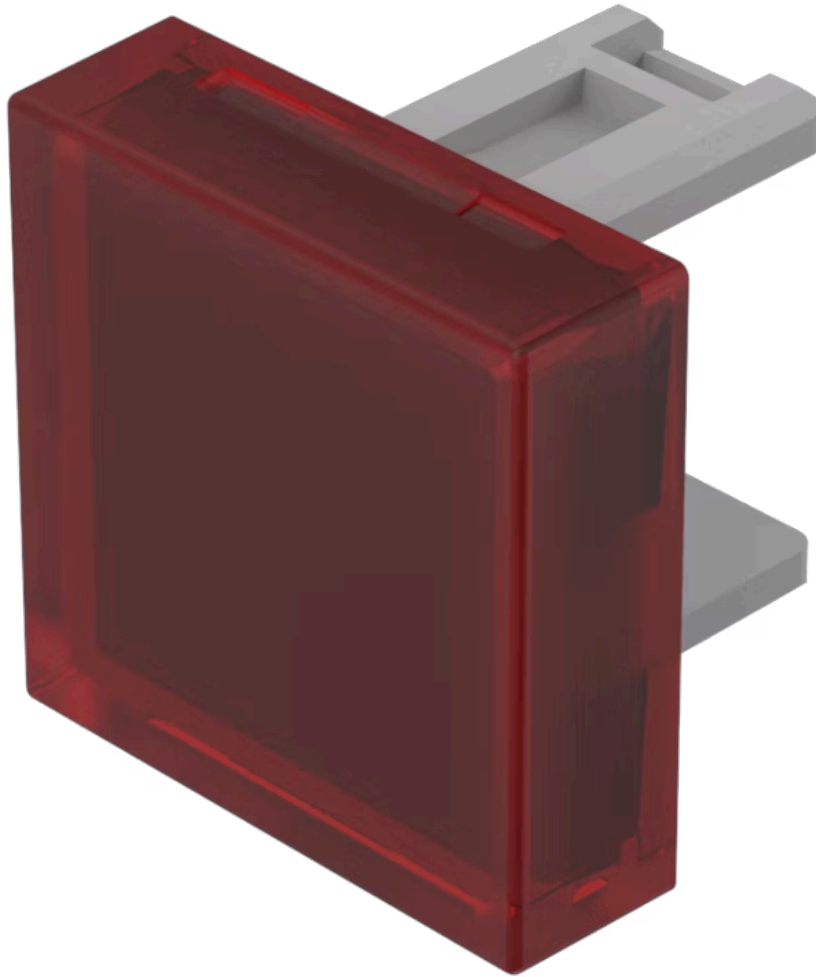


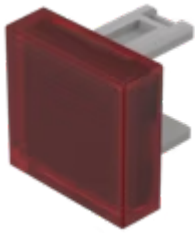
Lens

31-
953.2



<https://eao.com/p/31-953.2>

Your product:



31-953.2 Lens

FRONT

Front form: square

OPERATING-/INDICATION PART

Lens colour: Red

Lens material: Plastic

Lens illumination: illuminative

Lens shape: flush

Lens optics: transparent

MECHANICAL CHARACTERISTIC

Weight: 0.001 kg

CERTIFICATE

REACH: REACH compliant











RoHS: RoHS compliant

OTHER

Short Description: Lens, 15.3 mm x 15.3 mm, illuminative, Red, flush, Plastic

Dimension: 15.3 mm x 15.3 mm

Where to Buy

	Distributor	Quantity in Stock	
	Distrelec	112 in stock	Buy 
	Farnell UK	72 in stock	Buy 
	element14 Singapore	72 in stock	Buy 
	DigiKey	49 in stock	Buy 
	Newark	22 in stock	Buy 

[Show more](#) 

Powered by oemsecrets.com