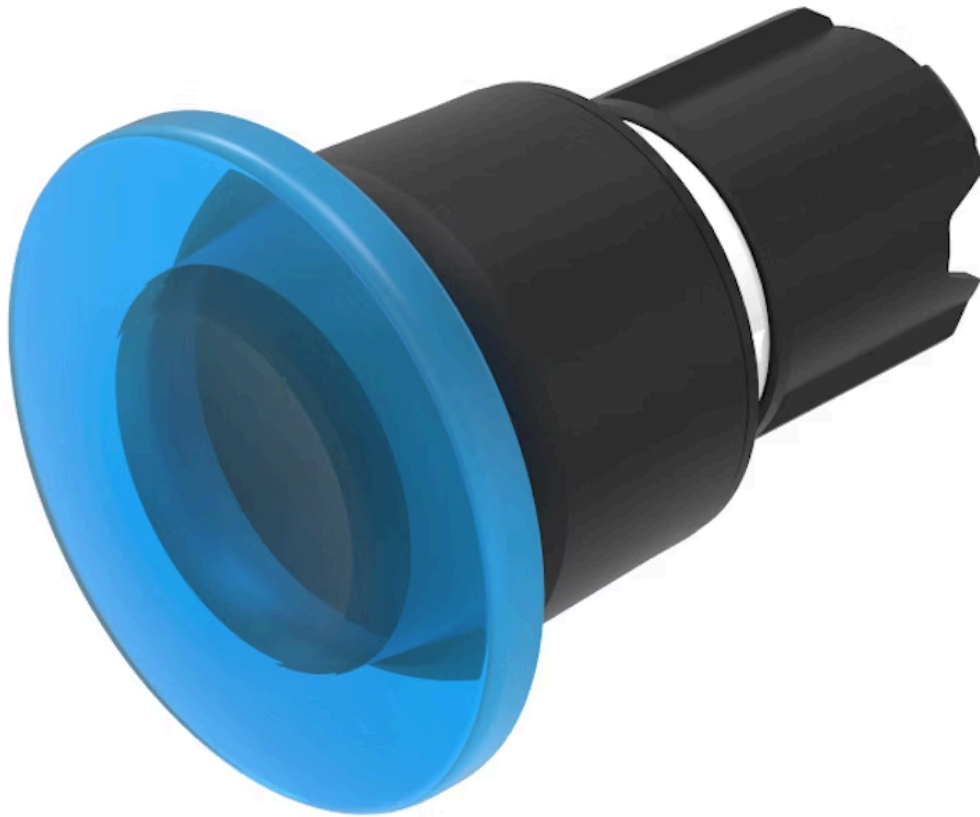


# Actuator

45-  
2630.19J0.000



<https://www.eao.com/p/45-2630.19J0.000>

Your product:

---



## 45-2630.19J0.000 Actuator

### FRONT

<b>Front dimension:</b>	Ø 40 mm
<b>Front form:</b>	Round
<b>Front bezel colour:</b>	Black
<b>Front bezel material:</b>	Plastic

### MOUNTING

<b>Design:</b>	Raised
<b>Mounting cut-out:</b>	Ø 22.3 mm
<b>Mounting type:</b>	Panel mounting

### OPERATING-/INDICATION PART

<b>Lens colour:</b>	Blue
<b>Lens material:</b>	Plastic
<b>Lens illumination:</b>	Illuminated
<b>Lens shape:</b>	Mushroom-head
<b>Lens optics:</b>	transparent

### ELECTRICAL CHARACTERISTICS

**Switching rating:**

### MECHANICAL CHARACTERISTIC

**Switching action:** Maintained

<b>Switching system:</b>	Slow-make switching element
<b>Release type:</b>	Pull unlock
<b>Mechanical lifetime:</b>	500 000 cycles of operation
<b>Operating frequency:</b>	Max. 1 800/h
<b>Weight:</b>	0.03 kg

#### **AMBIENT CONDITION**

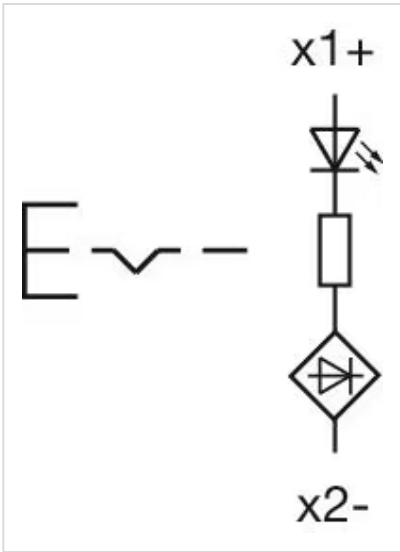
<b>IP front protection:</b>	IP66, IP67, IP69K
<b>Operating temperature:</b>	- 25 °C ... + 70 °C
<b>Storage temperature:</b>	- 40 °C ... + 80 °C
<b>Shock resistance:</b>	According to IEC 60068-2-27: Sinusoidal half-wave 50 g / 11 ms
<b>Vibration resistance:</b>	According to IEC 60068-2-6: 20 ... 500 Hz: 5 g
<b>Climate resistance:</b>	During operation according to IEC 60721: 3K6, 3C3, 3S2, 3M6

#### **CERTIFICATE**

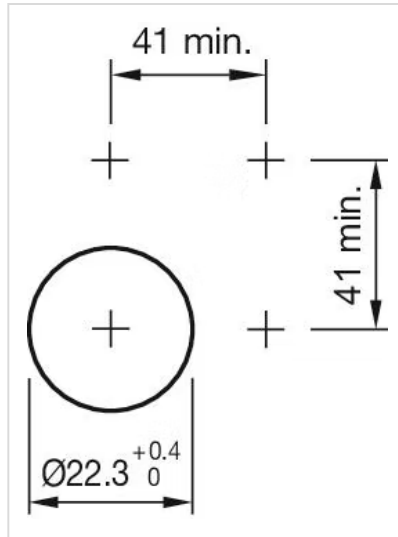
<b>REACH:</b>	REACH compliant
<b>RoHS:</b>	RoHS compliant

#### **OTHER**

<b>Short Description:</b>	Actuator, Ø 22.3 mm, Ø 40 mm, Mushroom-head, Illuminated, Blue, Plastic, transparent, Round, Black, Plastic, Maintained, IP66, IP67, IP69K, Pull unlock
<b>Housing colour:</b>	Black
<b>Housing material:</b>	Plastic
<b>Wiring diagrams:</b>	



Mounting cut-outs:



Dimension drawings:

