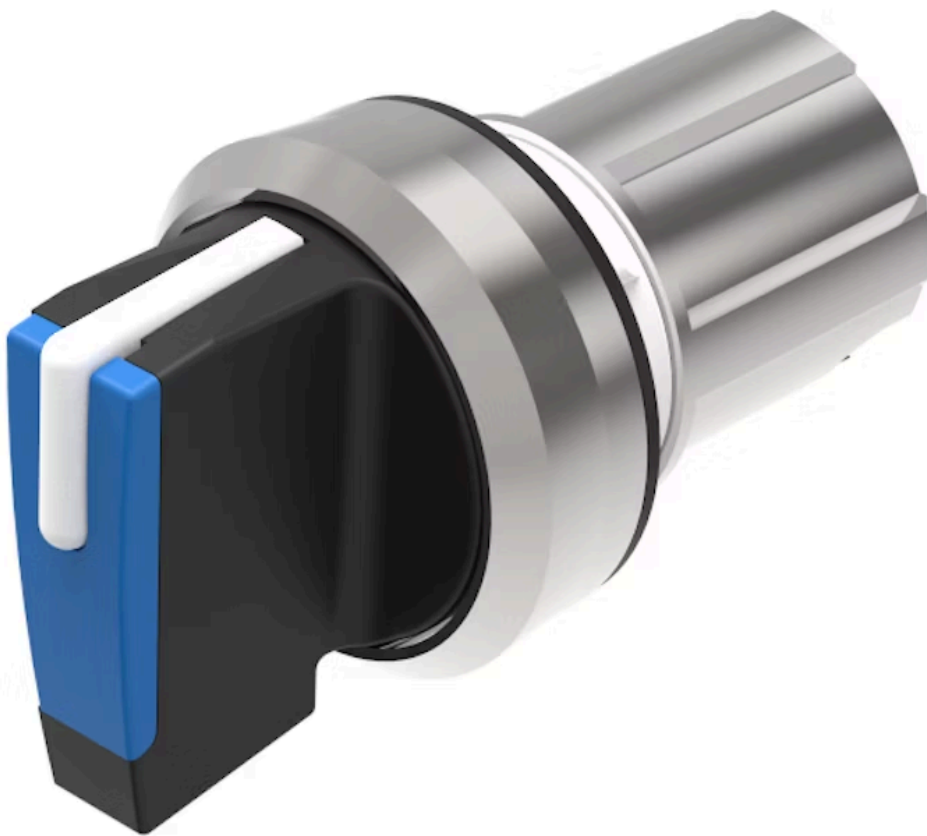


Actuator

45-
280S.2C60.003



<https://www.eao.com/p/45-280S.2C60.003>

Your product:



45-280S.2C60.003 Actuator

FRONT

| | |
|-----------------------|-----------|
| Front dimension: | Ø 29,5 mm |
| Front form: | Round |
| Front bezel colour: | Silver |
| Front bezel material: | Metal |

MOUNTING

| | |
|-------------------|----------------|
| Design: | Raised |
| Mounting cut-out: | Ø 22.3 mm |
| Mounting type: | Panel mounting |

OPERATING-/INDICATION PART

| | |
|-----------------|---------|
| Lever colour: | Blue |
| Lever material: | plastic |
| Lever shape: | short |

MECHANICAL CHARACTERISTICS

| | |
|----------------------|--------------------------------------|
| Switching action: | Momentary - Rest - Momentary |
| Switching positions: | 3 positions |
| Switching angle: | 45° left / 45° right / -45° ... +45° |
| Mechanical lifetime: | 1 Mil. cycles of operation |
| Operating frequency: | 1 800/h |
| Weight: | 0.052 kg |

AMBIENT CONDITION

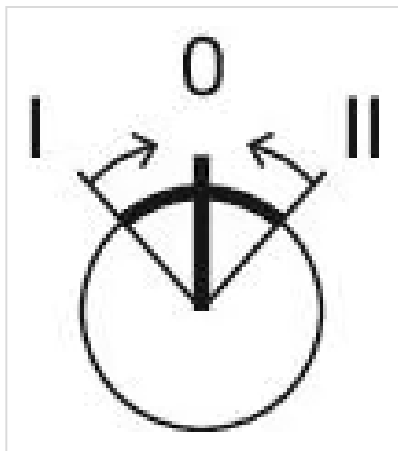
| | |
|-------------------------------|--|
| IP front protection: | IP66, IP67, IP69K |
| Operating temperature: | – 25 °C ... + 70 °C |
| Storage temperature: | – 40 °C ... + 80 °C |
| Shock resistance: | According to IEC 60068-2-27: Sinusoidal half-wave 50 g / 11 ms |
| Vibration resistance: | According to IEC 60068-2-6: 10 ... 500 Hz: 5 g |
| Climate resistance: | During operation according to IEC 60721: 3K6, 3C3, 3S2, 3M6 |

CERTIFICATE

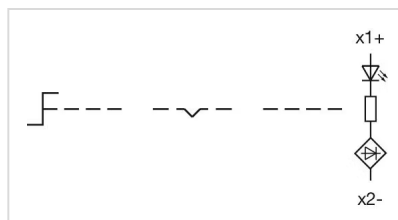
| | |
|---------------|-----------------|
| REACH: | REACH compliant |
| RoHS: | RoHS compliant |

OTHER

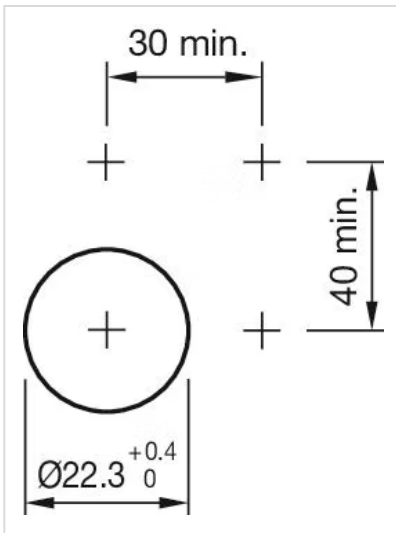
| | |
|-----------------------------|---|
| Short Description: | Actuator, Ø 22.3 mm, Ø 29,5 mm, optional illuminative, Blue, short, Round, Silver, Metal, Momentary - Rest - Momentary, IP66, IP67, IP69K |
| Housing material: | Metal |
| Hints: | External diameter of the short lever 32.3 mm |
| Switching positions: | |



Wiring diagrams:



Mounting cut-outs:



Dimension drawings:

