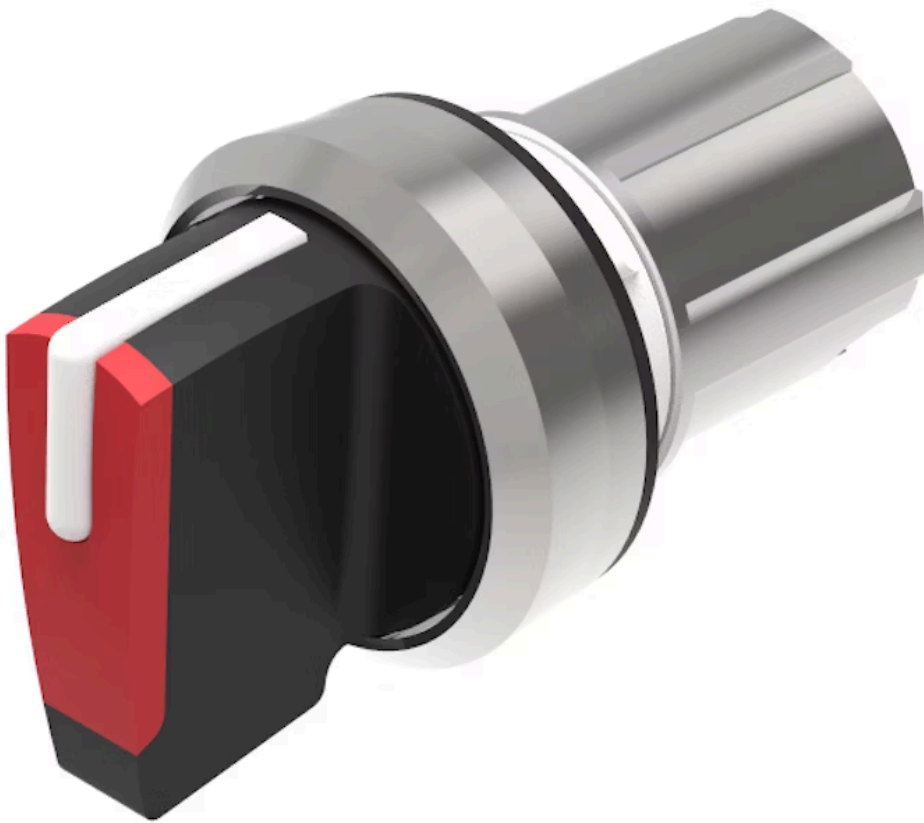


Actuator

45-
2828.2C20.001



<https://www.eao.com/p/45-2828.2C20.001>

Your product:



45-2828.2C20.001 Actuator

FRONT

Front dimension:	Ø 29,5 mm
Front form:	Round
Front bezel colour:	Silver
Front bezel material:	Metal

MOUNTING

Design:	Raised
Mounting cut-out:	Ø 22.3 mm
Mounting type:	Panel mounting

OPERATING-/INDICATION PART

Lever colour:	Red
Lever material:	plastic
Lever shape:	short

ELECTRICAL CHARACTERISTICS

Switching rating:

MECHANICAL CHARACTERISTIC

Switching action:	Rest - Maintained
Switching positions:	2 positions
Switching angle:	90° right / -45° ... +45°

Mechanical lifetime: 1 Mil. cycles of operation
Operating frequency: 1 800/h
Weight: 0.053 kg

AMBIENT CONDITION

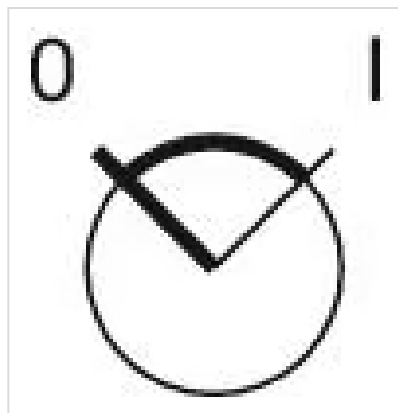
IP front protection: IP66, IP67, IP69K
Operating temperature: – 25 °C ... + 70 °C
Storage temperature: – 40 °C ... + 80 °C
Shock resistance: According to IEC 60068-2-27: Sinusoidal half-wave 50 g / 11 ms
Vibration resistance: According to IEC 60068-2-6: 10 ... 500 Hz: 5 g
Climate resistance: During operation according to IEC 60721: 3K6, 3C3, 3S2, 3M6

CERTIFICATE

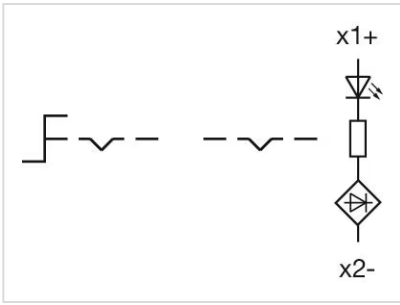
REACH: REACH compliant
RoHS: RoHS compliant

OTHER

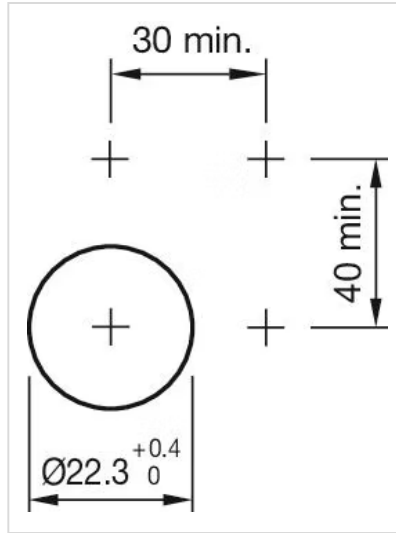
Short Description: Actuator, Ø 22.3 mm, Ø 29,5 mm, optional illuminative, Red, short, Round, Silver, Metal, Rest - Maintained, IP66, IP67, IP69K
Housing material: Metal
Hints: External diameter of the short lever 32.3 mm
Switching positions:



Wiring diagrams:



Mounting cut-outs:



Dimension drawings:

