

# Actuator

45-  
2H00.1016.000



<https://www.eao.com/p/45-2H00.1016.000>

Your product:

---



## 45-2H00.1016.000 Actuator

### FRONT

**Front dimension:** Ø 29,5 mm

**Front form:** Round

### MOUNTING

**Design:** Raised

**Mounting cut-out:** Ø 22.3 mm

**Mounting type:** Panel mounting

### ELECTRICAL CHARACTERISTICS

**Operating voltage:** 24 V AC/DC

**Rated Operational Voltage U<sub>e</sub>:** At AC: rated value 24 ... 24 V  
At DC: rated value 24 ... 24 V

**Insulation voltage:** Rated value 320 V

**Surge voltage resistance:** Rated value 4 kV

**Switching rating:**

**Pollution degree:** 3

### MECHANICAL CHARACTERISTIC

**Terminal:** Screw terminal

**Tightening torque:** 0.8 ... 1 Nm for screw terminal

**Terminal details 1:**  
– With end sleeves 2 x (0.5 ... 0.75 mm<sup>2</sup>)  
– Without end sleeves 2 x (0.5 ... 1.5 mm<sup>2</sup>)  
Solid

**Terminal details 2:**  
– Without end sleeves 2 x (0.5 ... 0.75 mm<sup>2</sup>)  
– With end sleeves 2 x (0.5 ... 1.5 mm<sup>2</sup>)

Finely stranded  
– For AWG cables for auxiliary contacts 2 x (18 ... 14)

**Weight:** 0.001 kg

### ACOUSTICAL CHARACTERISTICS

**Tone frequency:** Approx. 2.4 kHz continuous tone only

### AMBIENT CONDITION

**Operating temperature:** – 25 °C ... + 70 °C

**Storage temperature:** – 40 °C ... + 80 °C

**Shock resistance:** According to IEC 60068-2-27: Sinusoidal half-wave 50 g / 11 ms

**Vibration resistance:** According to IEC 60068-2-6: 10 ... 500 Hz: 5 g

**Climate resistance:** During operation according to IEC 60721: 3B2, 3K6, 3S2, 3M6

### CERTIFICATE

**REACH:** REACH compliant

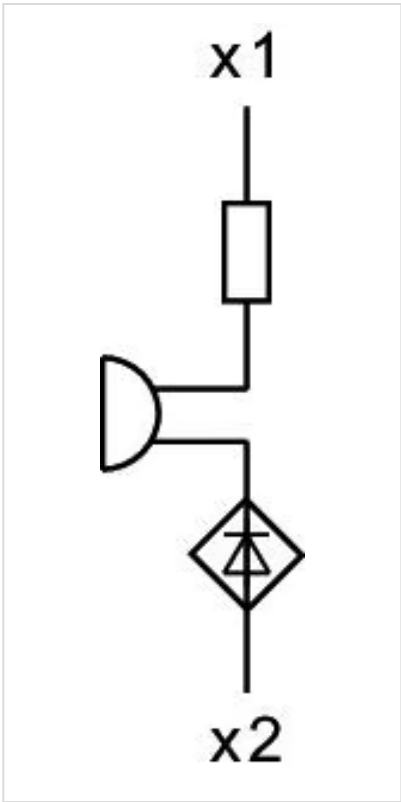
**RoHS:** RoHS compliant

### OTHER

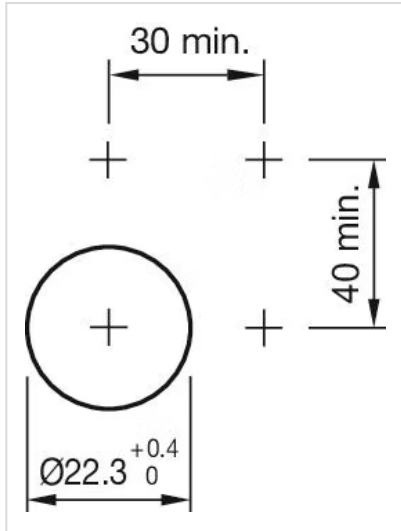
**Short Description:** Actuator, Ø 22.3 mm, Ø 29,5 mm, Round, Screw terminal

**Housing material:** Plastic

**Wiring diagrams:**



Mounting cut-outs:



Dimension drawings:

