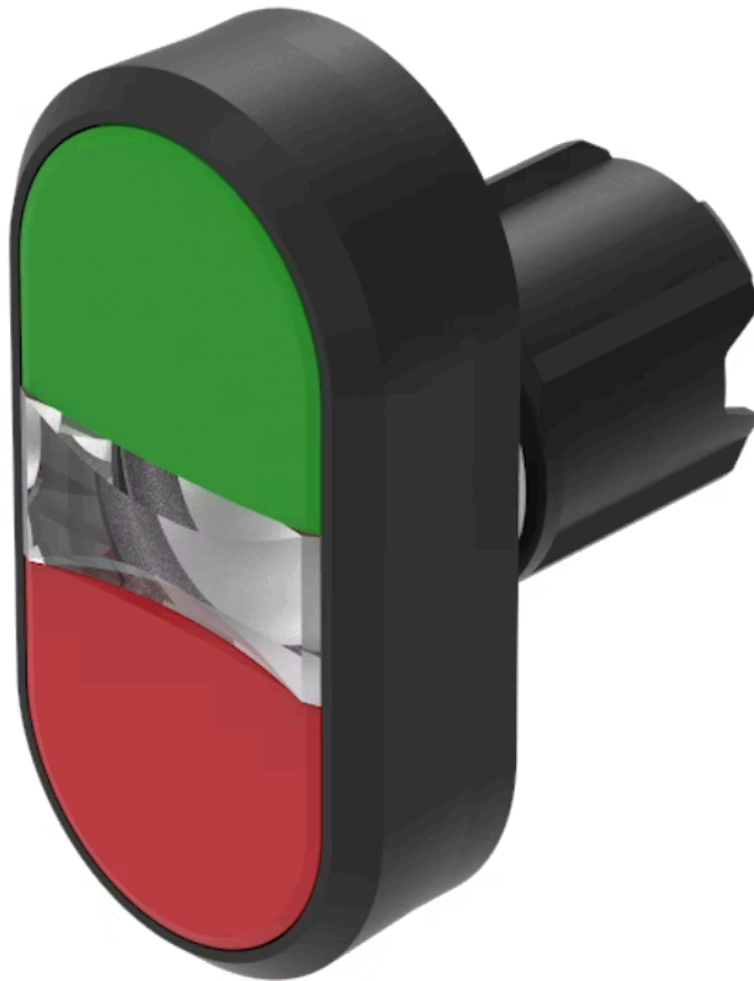


Actuator

45-
2J31.16T0.000



<https://www.eao.com/component/45-2J31.16T0.00...>

Your product:



45-2J31.16T0.000 Actuator

FRONT

Front dimension:	58 mm x 35 mm
Front form:	Rectangular
Front bezel colour:	Black
Front bezel material:	Plastic

MOUNTING

Design:	Raised
Mounting cut-out:	Ø 22.3 mm
Mounting type:	Panel mounting

OPERATING-/INDICATION PART

Lens colour:	Green-red
Lens material:	Plastic
Lens illumination:	Non illuminated
Lens shape:	Flush
Lens optics:	opaque
Lens type:	Level with front bezel

MECHANICAL CHARACTERISTICS

Switching action:	Momentary
Switching system:	Slow-make switching element
Mechanical lifetime:	2 Mil. cycles of operation

Operating frequency: Max. 3 600/h

Weight: 0.026 kg

AMBIENT CONDITION

IP front protection: IP66, IP67, IP69K

Operating temperature: – 25 °C ... + 70 °C

Storage temperature: – 40 °C ... + 80 °C

Shock resistance: According to IEC 60068-2-27: Sinusoidal half-wave 50 g / 11 ms

Vibration resistance: According to IEC 60068-2-6: 10 ... 500 Hz: 5 g

Climate resistance: During operation according to IEC 60721: 3K6, 3C3, 3S2, 3M6, 3B2

CERTIFICATE

REACH: REACH compliant

RoHS: RoHS compliant

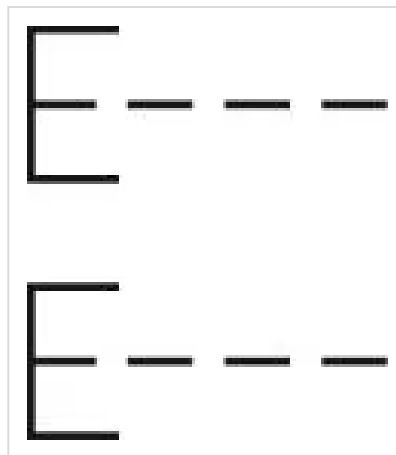
OTHER

Short Description: Actuator, Ø 22.3 mm, 58 mm x 35 mm, Flush, Non illuminated, Green-red, Plastic, opaque, Rectangular, Black, Plastic, Momentary, IP66, IP67, IP69K

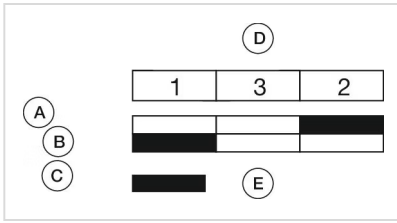
Housing colour: Black

Housing material: Plastic

Wiring diagrams:

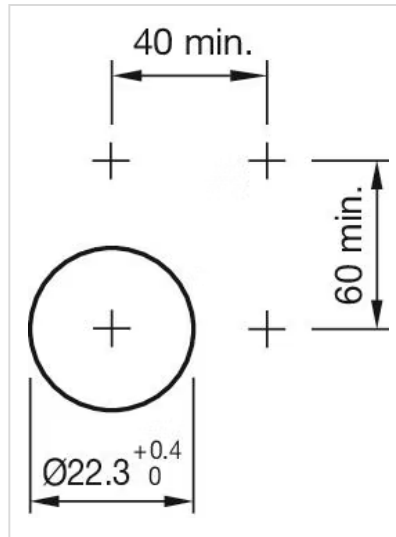


Component layouts:



- A = Switching action
- B = green (white) button pressed
- C = red (black) button pressed
- D = Arrangement switching element corresponds to designation of front adaptor
- E = Switching element actuated

Mounting cut-outs:



Dimension drawings:

