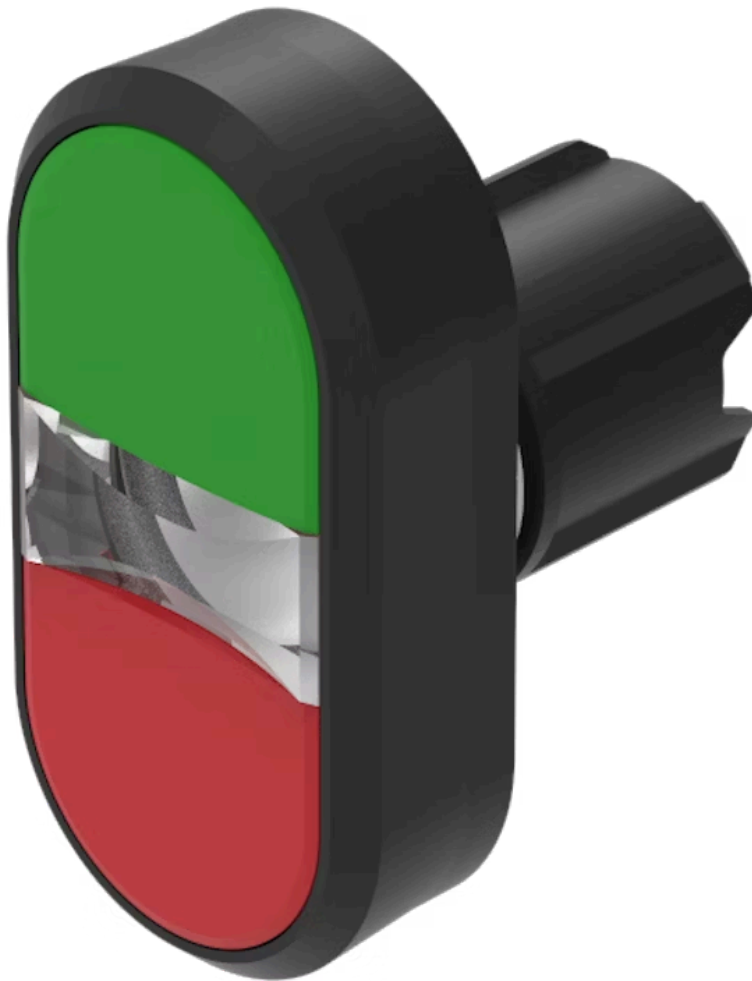


# Actuator

45-  
2K31.16T0.000



<https://eao.com/p/45-2K31.16T0.000>

Your product:

---



## 45-2K31.16T0.000 Actuator

### FRONT

<b>Front dimension:</b>	58 mm x 30 mm
<b>Front form:</b>	rectangular
<b>Front bezel colour:</b>	Black
<b>Front bezel material:</b>	Plastic

### MOUNTING

<b>Design:</b>	raised
<b>Mounting cut-out:</b>	Ø 22.3 mm
<b>Mounting type:</b>	Panel mounting

### OPERATING-/INDICATION PART

<b>Lens colour:</b>	Green-red
<b>Lens material:</b>	Plastic
<b>Lens illumination:</b>	illuminative
<b>Lens shape:</b>	flush
<b>Lens optics:</b>	opaque

### MECHANICAL CHARACTERISTIC

<b>Switching action:</b>	Momentary
<b>Switching system:</b>	Slow-make switching element
<b>Mechanical lifetime:</b>	2 Mio. cycles of operation
<b>Operating frequency:</b>	Max. 3 600/h

**Weight:** 0.025 kg

### AMBIENT CONDITION

**IP front protection:** IP66, IP67, IP69K

**Operating temperature:** - 25 °C ... + 70 °C

**Storage temperature:** - 40 °C ... + 80 °C

**Shock resistance:** According to IEC 60068-2-27: Sinusoidal half-wave 50 g / 11 ms

**Vibration resistance:** According to IEC 60068-2-6: 10 ... 500 Hz: 5 g

**Climate resistance:** During operation according to IEC 60721: 3K6, 3C3, 3S2, 3M6, 3B2

### CERTIFICATE

**REACH:** REACH compliant

**RoHS:** RoHS compliant

### OTHER

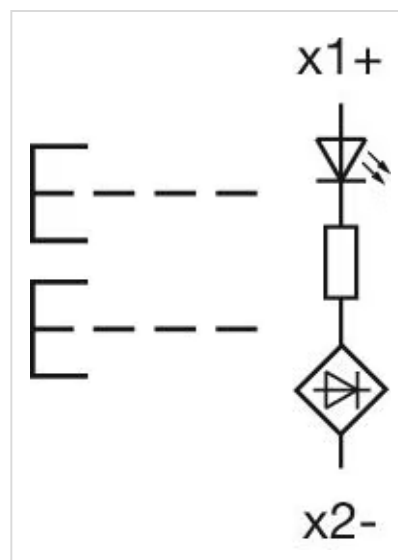
**Short Description:** Actuator, Ø 22.3 mm, 58 mm x 30 mm, flush, illuminative, Green-red, Plastic, opaque, rectangular, Black, Plastic, Momentary, IP66, IP67, IP69K

**Housing colour:** Black

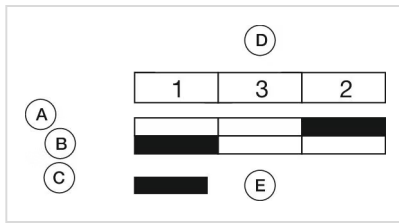
**Housing material:** Plastic

**Hints:** With illuminative centre window

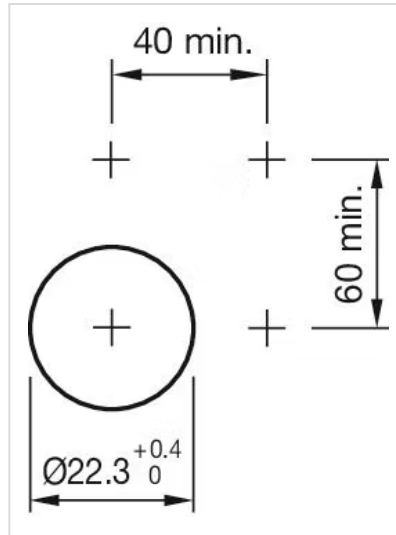
**Wiring diagrams:**



**Component layouts:**



**Mounting cut-outs:**



**Dimension drawings:**

