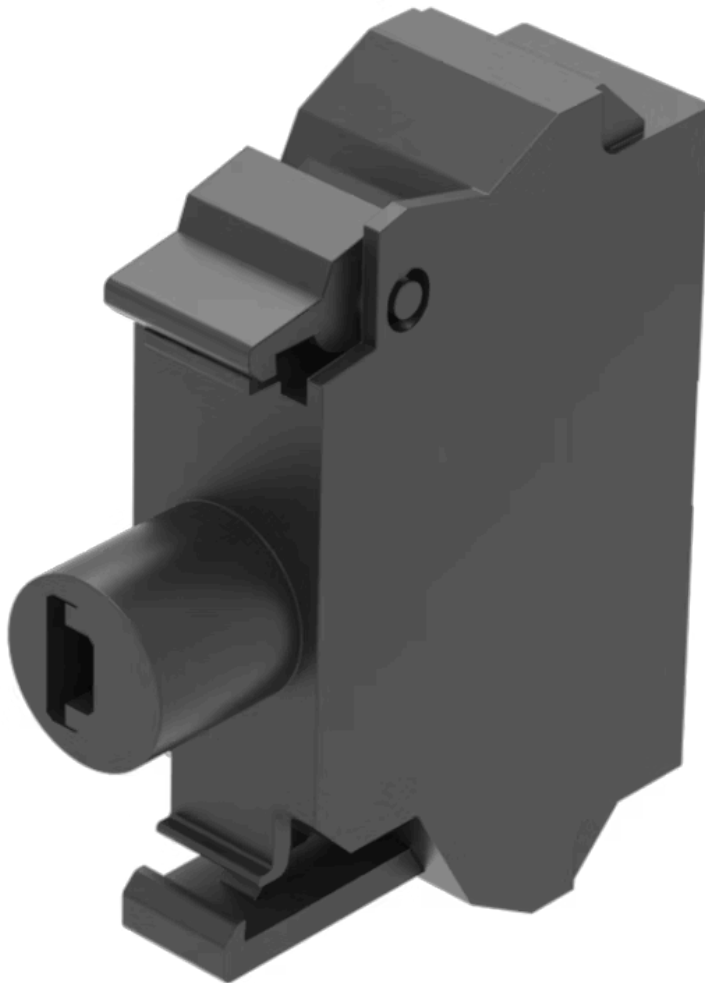


# Illumination element

45-320.1E48



<https://eao.com/p/45-320.1E48>

Your product:

---



## 45-320.1E48 Illumination element

### MOUNTING

**Component mounting type:** Front mounting

### OPERATING-/INDICATION PART

**Illumination colour:** Red

### ELECTRICAL CHARACTERISTICS

**Operating voltage:** 230 V AC

**Surge voltage resistance:** 4 kV

**Lumi. Intensity:** 450 - 1120 mcd

### MECHANICAL CHARACTERISTIC

**Terminal:** Spring-type terminal

**Weight:** 0.01 kg

### CERTIFICATE

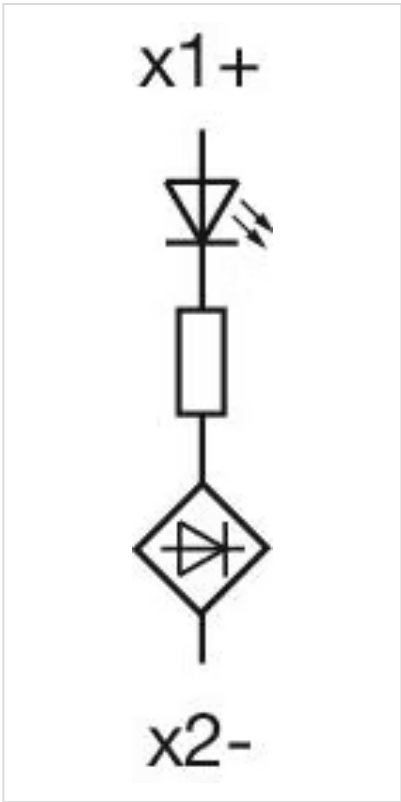
**REACH:** REACH compliant

**RoHS:** RoHS compliant

### OTHER

**Short Description:** Illumination element, Spring-type terminal, Red, 230 V AC, Front mounting

**Wiring diagrams:**



Dimension drawings:

