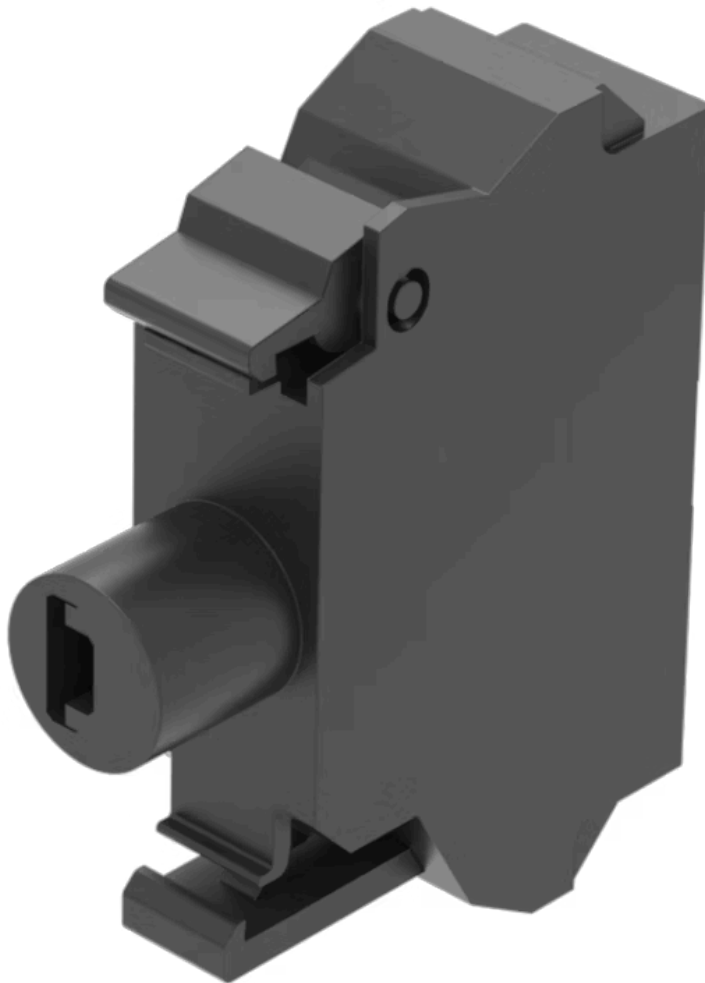


# Illumination element

45-320.1G46



<https://www.eao.com/p/45-320.1G46>

Your product:

---



## 45-320.1G46

### Illumination element

#### PRODUCT RANGE

**Product Status:** Phase-out

#### MOUNTING

**Component mounting type:** Front mounting

#### OPERATING-/INDICATION PART

**Illumination colour:** Yellow

#### ELECTRICAL CHARACTERISTICS

**Operating voltage:** 24 V AC/DC

**Surge voltage resistance:** 4 kV

**Lumi. Intensity:** 900 - 1400 mcd

#### MECHANICAL CHARACTERISTICS

**Terminal:** Spring-type terminal

**Terminal details 1:**  
Solid 2 x (0.25 ... 1.5mm<sup>2</sup>)  
Finely stranded  
– Without end sleeves 2 x (0.5 ... 1.5 mm<sup>2</sup>)  
– With end sleeves 2 x (0.5 ... 0.75 mm<sup>2</sup>)  
– For AWG cables for auxiliary contacts 2 x (24 ... 16)

**Weight:** 0.009 kg

#### CERTIFICATE

**REACH:** REACH compliant

**RoHS:**

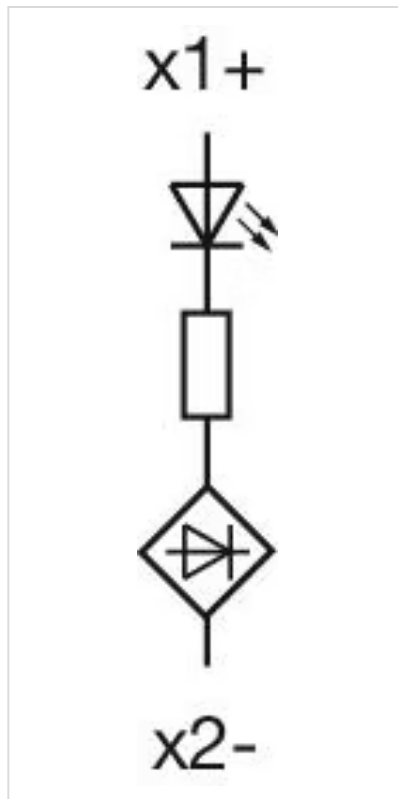
RoHS compliant

**OTHER**

**Short Description:**

Illumination element, Spring-type terminal, Yellow, 24 V AC/DC, Front mounting

**Wiring diagrams:**



**Dimension drawings:**

