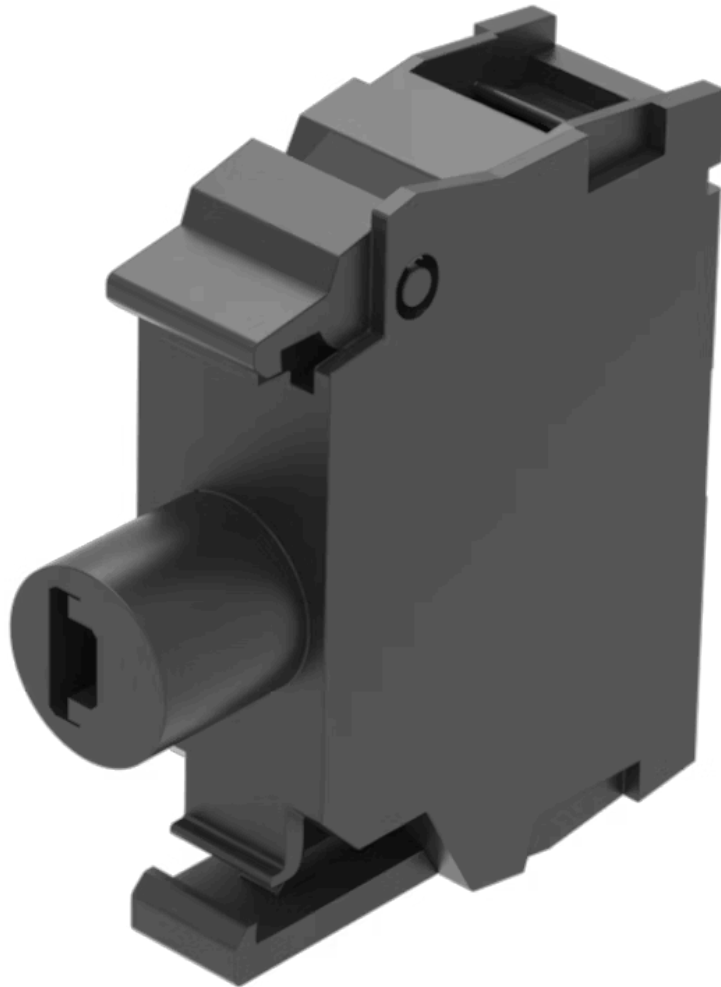


# Illumination element

45-320.1H16



<https://www.eao.com/p/45-320.1H16>

Your product:

---



## 45-320.1H16

### Illumination element

#### MOUNTING

**Component mounting type:** Front mounting

#### OPERATING-/INDICATION PART

**Illumination colour:** Green

#### ELECTRICAL CHARACTERISTICS

**Operating voltage:** 24 V AC/DC

**Surge voltage resistance:** 4 kV

**Lumi. Intensity:** 900 - 1400 mcd

#### MECHANICAL CHARACTERISTICS

**Terminal:** Screw terminal

**Terminal details 1:** Solid 2 x (1.0 ... 1.5mm<sup>2</sup>)  
– With end sleeves 2 x (0.5 ... 0.75 mm<sup>2</sup>)

**Terminal details 2:** Finely stranded  
– Without end sleeves 2 x (0.5 ... 0.75 mm<sup>2</sup>)  
– Without end sleeves 2 x (0.5 ... 1.5 mm<sup>2</sup>)  
– For AWG cables for auxiliary contacts 2 x (18 ... 14)

**Weight:** 0.01 kg

#### CERTIFICATE

**REACH:** REACH compliant

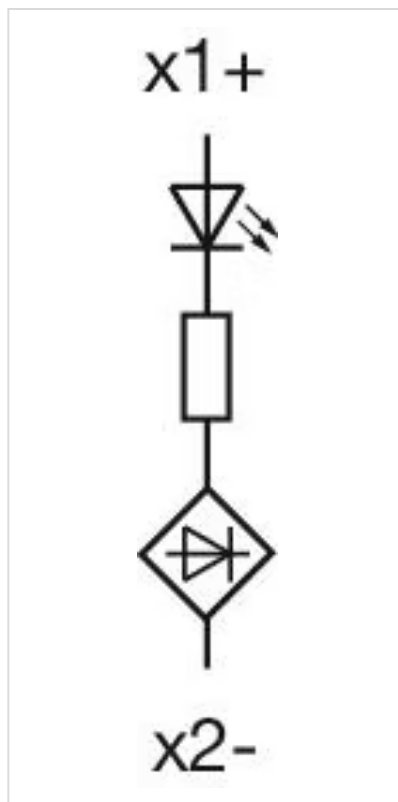
**RoHS:** RoHS compliant

## OTHER

### Short Description:

Illumination element, Screw terminal, Green, 24 V AC/DC, Front mounting

### Wiring diagrams:



### Dimension drawings:

