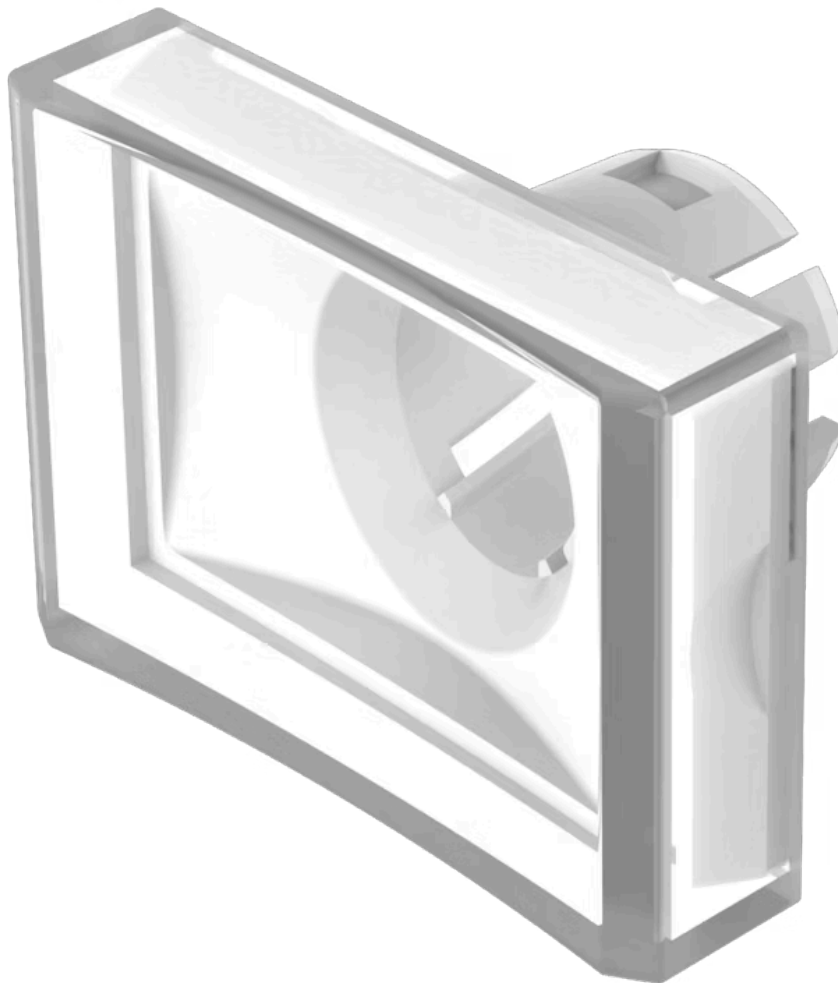


# Lens

51-  
904.7



<https://www.eao.com/component/51-904.7/en/lens>

Your product:

---



## 51-904.7 Lens

### FRONT

**Front form:** Rectangular

### OPERATING-/INDICATION PART

**Lens colour:** Colourless

**Lens material:** Plastic

**Lens illumination:** Illuminated

**Lens shape:** Concave

**Lens optics:** transparent

### MECHANICAL CHARACTERISTICS

**Weight:** 0.002 kg

### CERTIFICATE

**REACH:** REACH compliant

**RoHS:** RoHS compliant

### OTHER

**Short Description:** Lens, 21.5 mm x 15.3 mm, Illuminated, Colourless, Concave, Plastic

**Dimension:** 21.5 mm x 15.3 mm