

# Actuator

52-  
574.F22A



<https://eao.com/p/52-574.F22A>

Your product:

---



## 52-574.F22A Actuator

### FRONT

**Front dimension:** Ø 18 mm

**Front form:** round

### MOUNTING

**Design:** raised

**Mounting type:** Panel mounting

### OPERATING-/INDICATION PART

**Lever material:** plastic

**Lever shape:** short

### ELECTRICAL CHARACTERISTICS

**Contacts:** 2 NC / 2 NO

**Switching voltage and switching current:** 250 VAC, 5 A ( $\cos\phi$  0.75)

**Switching rating:** 250 V @ 5 A

**Electric strength:** 2500 VAC, 50 Hz, 1 min. between all terminals and earth, according to IEC 61058-1, part 15

**Protection class:** II

**Thermal current I<sub>th</sub>:** 5 A, according to EN / IEC 60947-5-1

### MECHANICAL CHARACTERISTIC

**Terminal:** Plug-in terminal, 2.8 x 0.5 mm

**Contact material:**

Gold

|                             |  |
|-----------------------------|--|
| <b>Switching action:</b>    | Maintained - Rest - Momentary  |
| <b>Switching system:</b>    | Snap-action switching element  |
| <b>Switching system:</b>    | Self-cleaning, double-break snap action switching system, 2 normally closed and 2 normally open contact per element. |
| <b>Switching positions:</b> | 3 positions  |
| <b>Switching angle:</b>     | 90° left / 42° right   |
| <b>Mechanical lifetime:</b> | 100 000 cycles of operation  |
| <b>Tightening torque:</b>   | Fixing nut max. 0.5 Nm   |
| <b>Wire cross section:</b>  | Max. wire cross-section 2 wires with 1 mm<br>Max. wire cross-section of stranded cable 2 x 0.75 mm <sup>2</sup>      |
| <b>Weight:</b>              | 0.015 kg   |

#### **AMBIENT CONDITION**

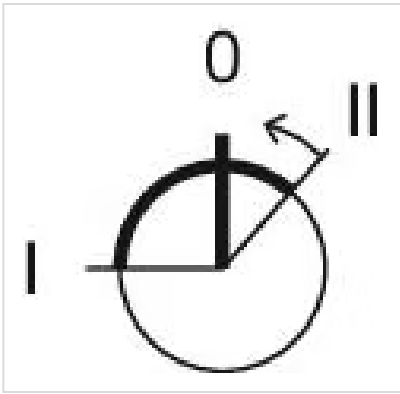
|                               |                                 |
|-------------------------------|---------------------------------|
| <b>IP front protection:</b>   | IP65, according to DIN EN 60529 |
| <b>Operating temperature:</b> | - 25 °C ... + 55 °C             |
| <b>Storage temperature:</b>   | - 40 °C ... + 85 °C             |

#### **CERTIFICATE**

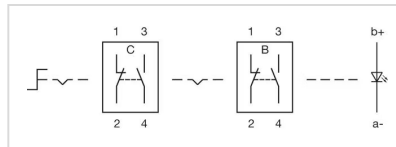
|                      |   |
|----------------------|---|
| <b>Approbations:</b> | CB (IEC 61058-1), CQC, CSA, DNV, ENEC (EN 61058-1), UL                      |
| <b>Conformities:</b> | CE, UKCA, 2011 / 65 / EC (RoHS), 2014 / 30 / EU (EMC), 2014 / 35 / EU (LVD) |
| <b>REACH:</b>        | REACH compliant   |
| <b>RoHS:</b>         | RoHS compliant  |

#### **OTHER**

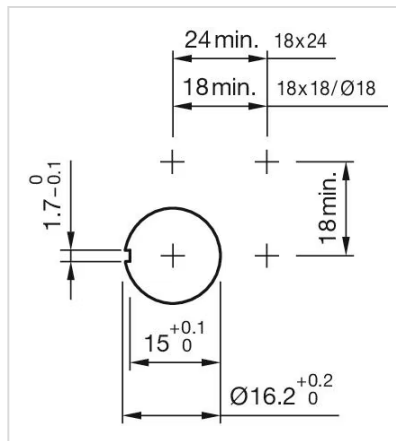
|                             |   |
|-----------------------------|---|
| <b>Short Description:</b>   | Actuator, Ø 18 mm, optional illuminative, short, round, 2 NC / 2 NO, Maintained - Rest - Momentary, Plug-in terminal, 2.8 x 0.5 mm, IP65, according to DIN EN 60529 |
| <b>Hints:</b>               | Illuminative  |
| <b>Switching positions:</b> |   |



**Wiring diagrams:**



**Mounting cut-outs:**



**Dimension drawings:**

