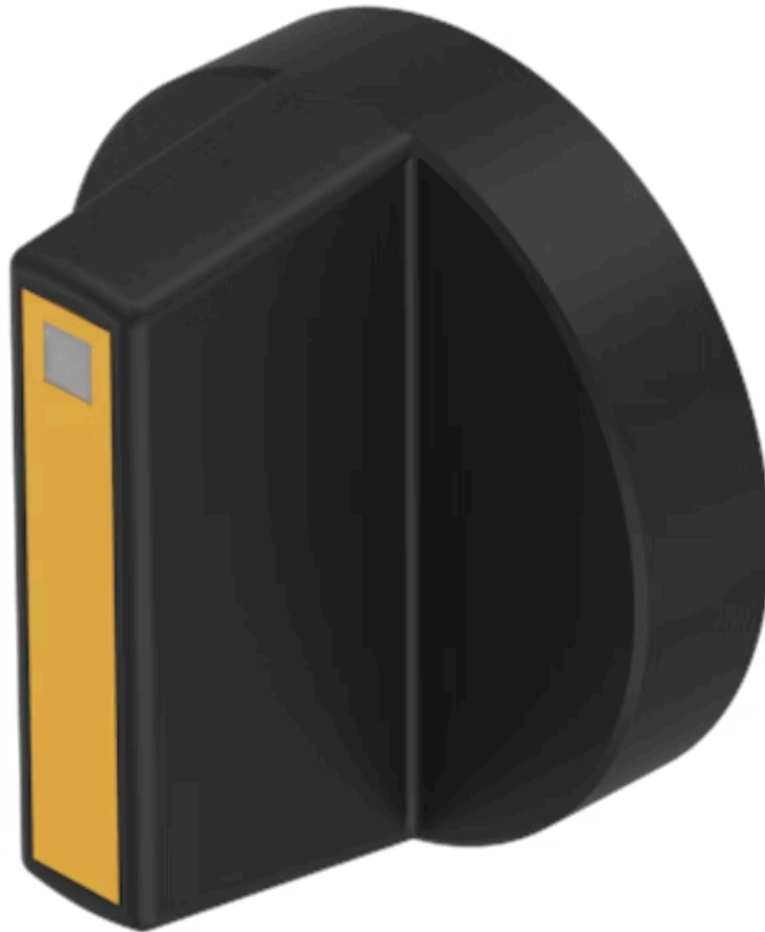


# Lever

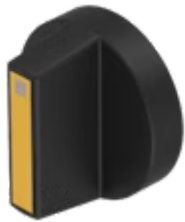
52-  
928.40



<https://www.eao.com/p/52-928.40>

Your product:

---



52-928.40  
Lever

#### OPERATING-/INDICATION PART

Lever colour:	Black
Lever bar colour:	Yellow
Lever material:	plastic
Lever shape:	short

#### MECHANICAL CHARACTERISTIC

Weight:	0.001 kg
---------	----------

#### CERTIFICATE

REACH:	REACH compliant
RoHS:	RoHS compliant

#### OTHER

Short Description:	Lever, illuminative, Yellow, Black, short, plastic
Product attributes:	With bar and marking dot
Hints:	With bar and marking dot