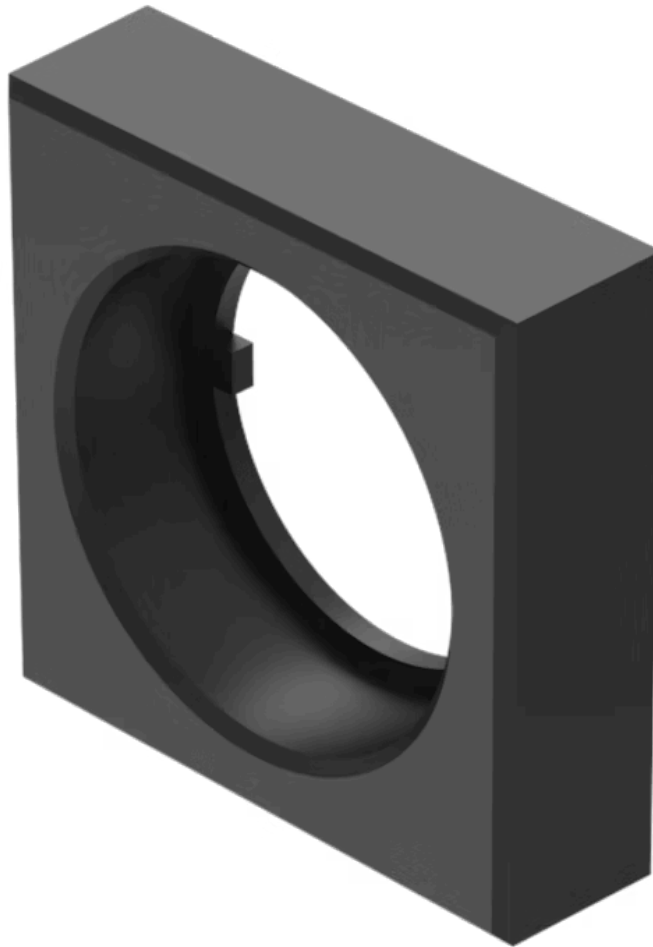


# Front bezel for Selector switch

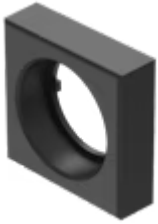
52-950.0



<https://www.eao.com/p/52-950.0>

Your product:

---



## 52-950.0

### Front bezel for Selector switch

#### FRONT

<b>Front dimension:</b>	24 mm x 24 mm
<b>Front form:</b>	Square
<b>Front bezel colour:</b>	Black
<b>Front bezel material:</b>	Plastic, according to UL 94 V0

#### MECHANICAL CHARACTERISTIC

<b>Weight:</b>	0.001 kg
----------------	----------

#### CERTIFICATE

<b>REACH:</b>	REACH compliant
<b>RoHS:</b>	RoHS compliant

#### OTHER

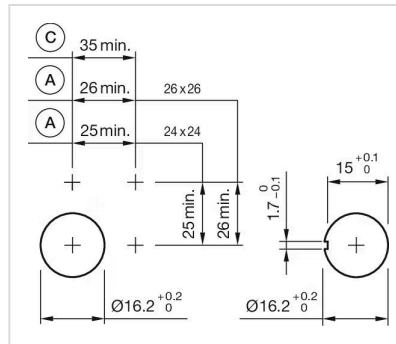
**Short Description:**

Front bezel for Selector switch, 24 mm x 24 mm, Black, Plastic, according to UL 94 V0

**Dimension:**

24 mm x 24 mm

**Mounting cut-outs:**



A = Solder/Plug-in terminal 2.8 mm x 0.5 mm  
C = Screw terminal