

Actuator

61-1250.0



<https://www.eao.com/p/61-1250.0>

Your product:



61-1250.0 Actuator

FRONT

| | |
|-----------------------|---------------|
| Front dimension: | 24 mm x 24 mm |
| Front form: | Square |
| Front bezel colour: | Black |
| Front bezel material: | Plastic |

MOUNTING

| | |
|-------------------|----------------|
| Mounting cut-out: | Ø 16 mm |
| Mounting type: | Panel mounting |

OPERATING-/INDICATION PART

| | |
|--------------------|-------------|
| Lens illumination: | Illuminated |
|--------------------|-------------|

ELECTRICAL CHARACTERISTICS

Switching rating:

MECHANICAL CHARACTERISTICS

| | |
|-----------------------------|-------------------------------------------------------------------------------------|
| Switching action: | Maintained |
| Mechanical lifetime: | According to DIN/IEC 60512-5-6 and EN/IEC 60947-5-1, 1 Mil. cycles of operation |
| Operating force: | 3 N ... 5 N snap-action switching element, 3.5 ... 11 N slow-make switching element |
| Operating Travel: | 3 mm |
| Tightening torque: | Max. 0.5 Nm |
| Weight: | 0.005 kg |

AMBIENT CONDITION

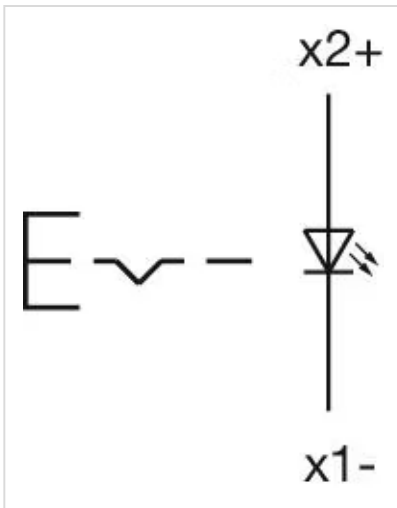
| | |
|-------------------------------|---------------------------------------------------------------------------------------|
| IP Protection: | IP40 rear side, according to EN IEC 60529, IP67 front side, according to EN IEC 60529 |
| Operating temperature: | – 25 °C ... + 55 °C |
| Storage temperature: | – 40 °C ... + 85 °C |

CERTIFICATE

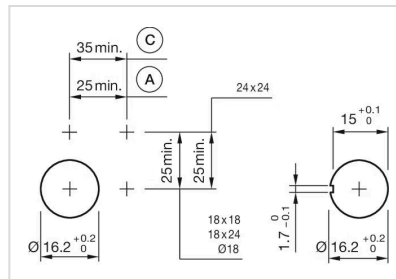
| | |
|---------------|-----------------|
| REACH: | REACH compliant |
| RoHS: | RoHS compliant |

OTHER

| | |
|---------------------------|-----------------------------------------------------------------------------------|
| Short Description: | Actuator, Ø 16 mm, 24 mm x 24 mm, Illuminated, Square, Black, Plastic, Maintained |
| Internal size: | 20 mm x 20 mm |
| Housing colour: | Black |
| Housing material: | Plastic, according to UL 94 V0, self-extinguishing |
| Wiring diagrams: | |

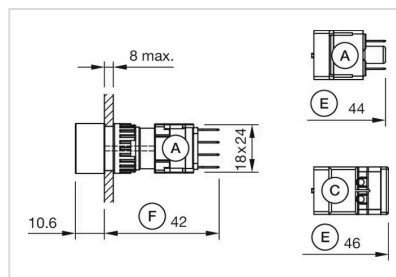


Mounting cut-outs:



A = Solder/Plug-in terminal 2.8 mm x 0.5 mm
C = Screw terminal

Dimension drawings:



A = Plug-in terminal 2.8 mm x 0.5 mm
C = Screw terminal
E = Slow-make switching element
F = Snap-action switching element