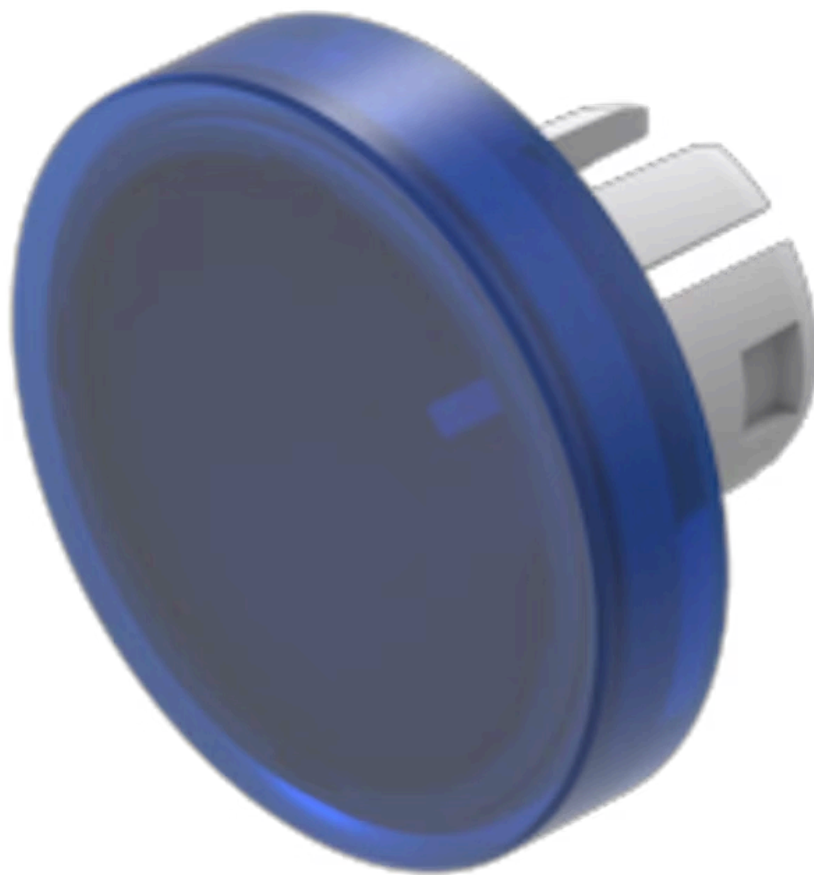


# Lens

61-  
9642.6



<https://www.eao.com/p/61-9642.6>

Your product:

---



## 61-9642.6 Lens

### FRONT

**Front form:** Round

### OPERATING-/INDICATION PART

**Lens colour:** Blue

**Lens material:** Plastic, according to UL 94 HB

**Lens illumination:** Illuminated

**Lens shape:** Flush

**Lens optics:** transparent

**Shape of illumination:** Front

### MECHANICAL CHARACTERISTICS

**Weight:** 0.002 kg

### CERTIFICATE

**REACH:** REACH compliant

**RoHS:** RoHS compliant

### OTHER

**Short Description:** Lens, Ø 19.7 mm, Illuminated, Blue, Flush, Plastic, according to UL 94 HB

**Dimension:** Ø 19.7 mm