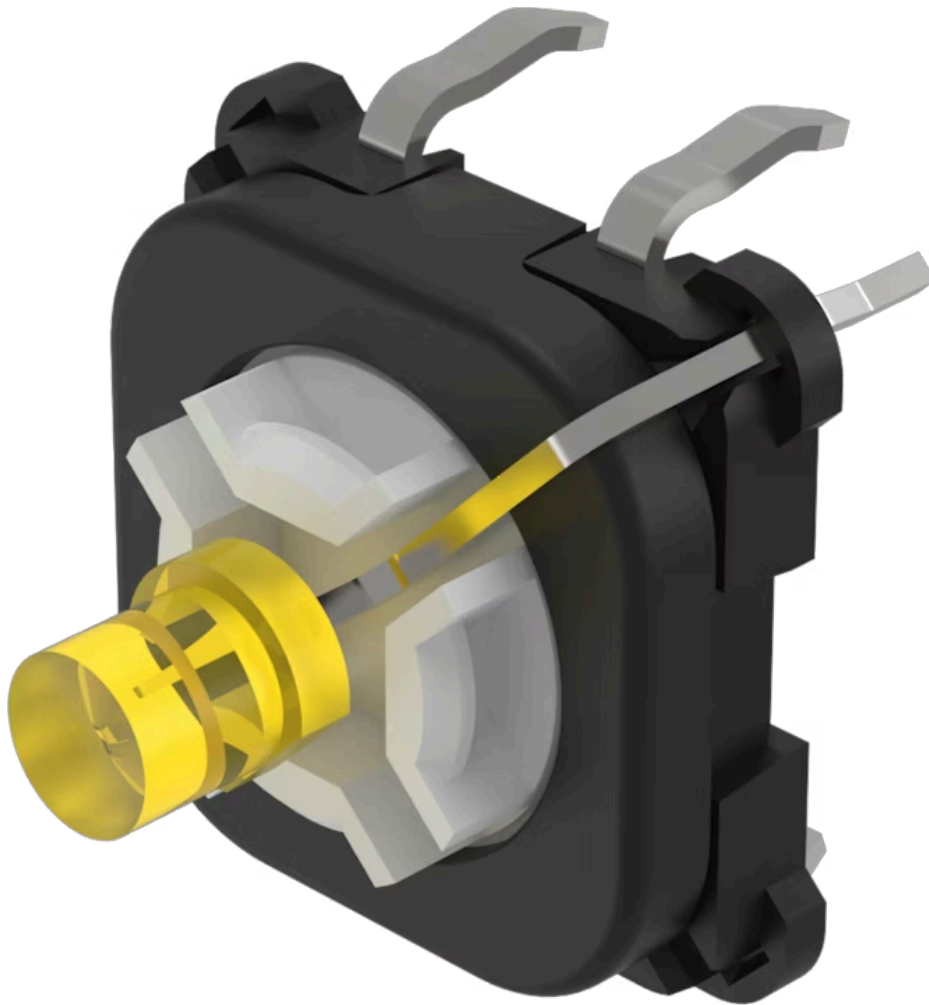


# Switching element

70-220.4S



<https://www.eao.com/component/70-220.4S/en/sw...>

Your product:

---



## 70-220.4S Switching element

### OPERATING-/INDICATION PART

**Illumination colour:** Yellow

### ELECTRICAL CHARACTERISTICS

**Contacts:** 1 NO

**Switching rating:** 42 V DC @ 0,1 A

**Lumi. Intensity:** 600 mcd

### MECHANICAL CHARACTERISTICS

**Terminal:** PCB terminal

**Contact material:** Gold

**Switching action:** Momentary

**Switching system:** Short-travel element

**Weight:** 0.001 kg

### CERTIFICATE

**REACH:** REACH compliant

**RoHS:** RoHS compliant

### OTHER

**Short Description:** Switching element, Short-travel element, 42 V DC @ 0,1 A, Gold, 1 NO, PCB terminal

**Hints:** The customer has to decide what series resistor shall be used to the LED

**Wiring diagrams:**

