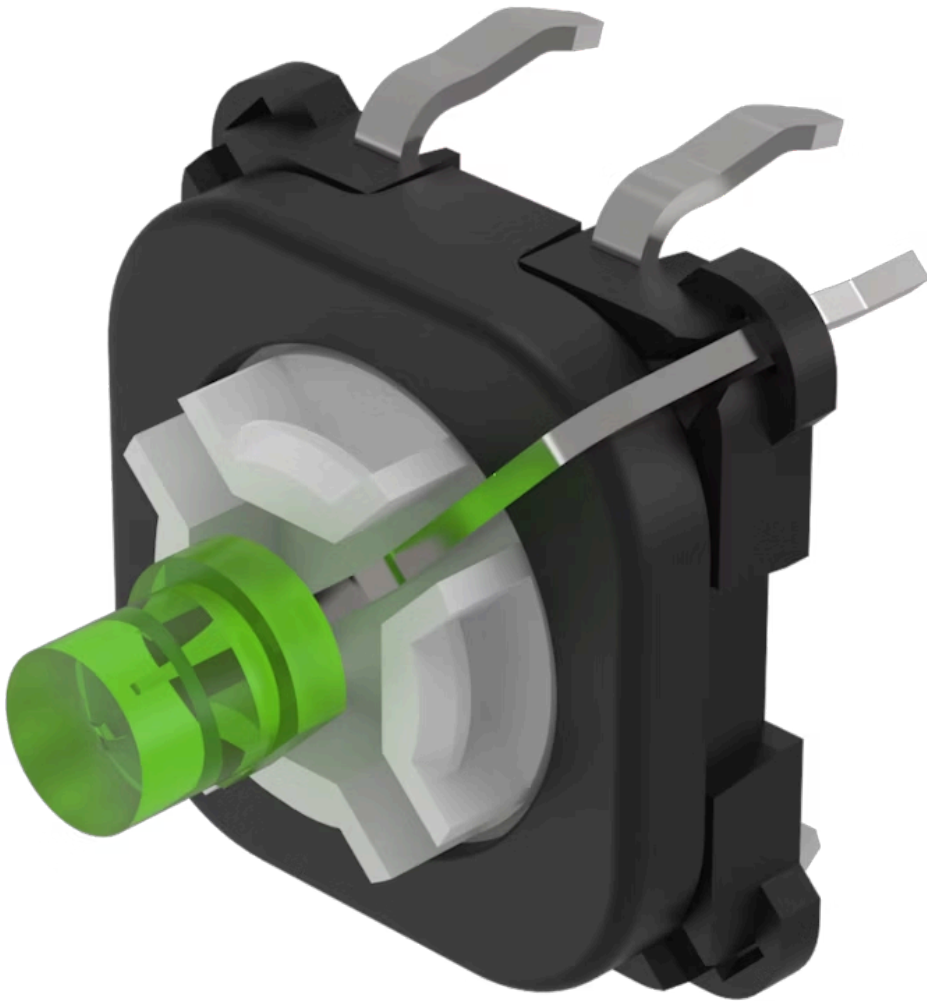


# Switching element

70-220.5S



<https://www.eao.com/p/70-220.5S>

Your product:

---



## 70-220.5S

### Switching element

#### OPERATING-/INDICATION PART

**Illumination colour:** Green

#### ELECTRICAL CHARACTERISTICS

**Contacts:** 1 NO

**Switching rating:** 42 V DC @ 0,1 A

**Lumi. Intensity:** 650 mcd

#### MECHANICAL CHARACTERISTICS

**Terminal:** PCB terminal

**Contact material:** Gold

**Switching action:** Momentary

**Switching system:** Short-travel element

**Weight:** 0.001 kg

#### CERTIFICATE

**REACH:** REACH compliant

**RoHS:** RoHS compliant

#### OTHER

**Short Description:** Switching element, Short-travel element, 42 V DC @ 0,1 A, Gold, 1 NO, PCB terminal

**Hints:** The customer has to decide what series resistor shall be used to the LED

**Wiring diagrams:**

