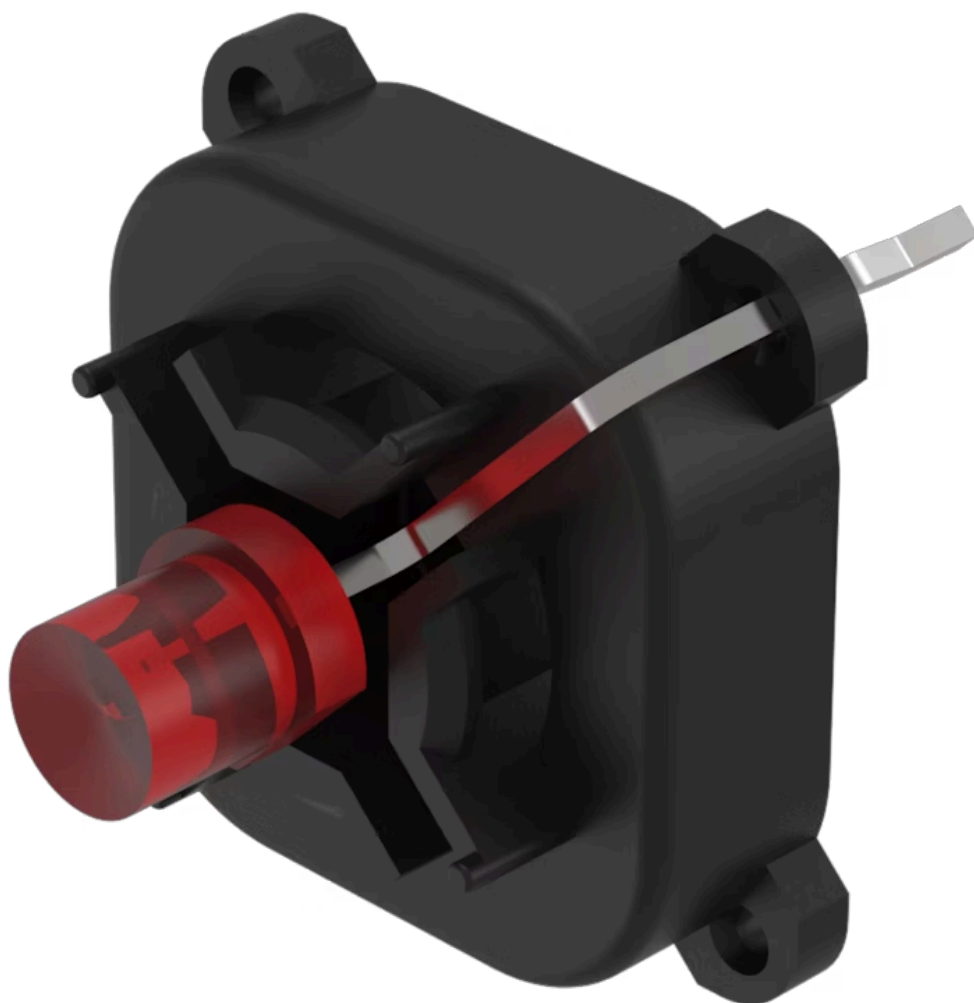


Indicator element

70-820.2S



<https://www.eao.com/p/70-820.2S>

Your product:



70-820.2S

Indicator element

OPERATING-/INDICATION PART

Illumination colour: Red

ELECTRICAL CHARACTERISTICS

Operating voltage: 2 DC

Lumi. Intensity: 160 mcd

MECHANICAL CHARACTERISTICS

Terminal: PCB terminal

Weight: 0.001 kg

CERTIFICATE

REACH: REACH compliant

RoHS: RoHS compliant

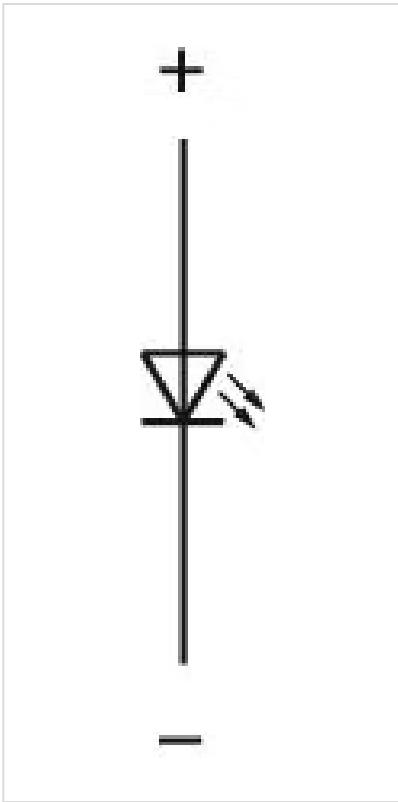
OTHER

Short Description: Indicator element, Red, Single-LED, 2 DC, PCB terminal

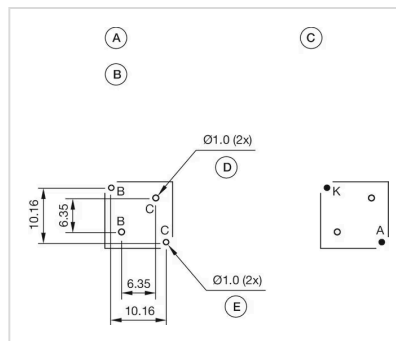
Kind of illumination: Single-LED

Hints: The customer has to decide what series resistor shall be used to the LED

Wiring diagrams:



Component layouts:



- A = Illumination element
- B = Single LED
- C = Drilling plan (component side)
- D = Hole for centering pins non-metallic
- E = Hole for LED

Dimension drawings:

