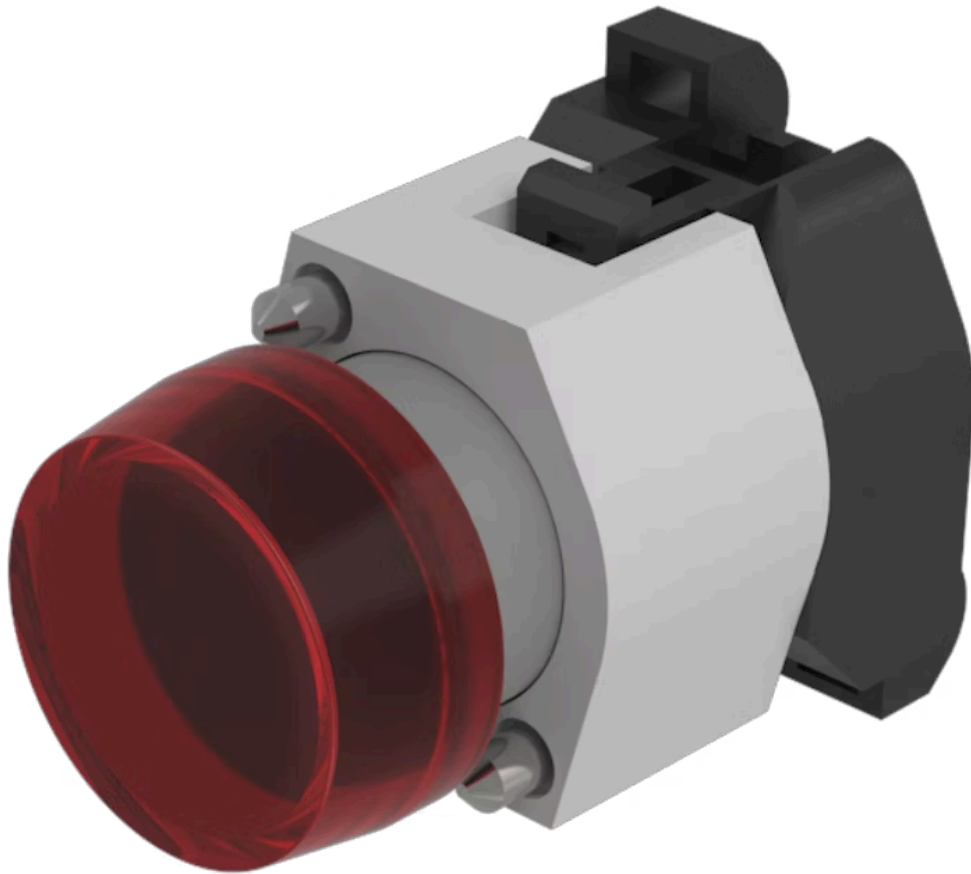


Actuator

704.001.2



<https://www.eao.com/p/704.001.2>

Your product:



704.001.2 Actuator

FRONT

Front dimension: Ø 29 mm

Front form: Round

MOUNTING

Design: Raised

Mounting type: Panel mounting

OPERATING-/INDICATION PART

Lens cap colour: Red

Lens cap material: Plastic

Lens cap optical effect: transparent

Marking cap colour: Colourless

Marking cap optics: translucent

Marking cap surface: ribbed

ELECTRICAL CHARACTERISTICS

Switching rating:

Standards: The switches comply with the "Standards for low-voltage switching devices" DIN EN 60947-1

MECHANICAL CHARACTERISTIC

Terminal: Screw terminal

Weight: 0.05 kg

AMBIENT CONDITION

IP Protection: IP65 front side

Operating temperature: - 40 °C ... + 55 °C

Storage temperature: - 40 °C ... + 85 °C

CERTIFICATE

REACH: REACH compliant

RoHS: RoHS compliant

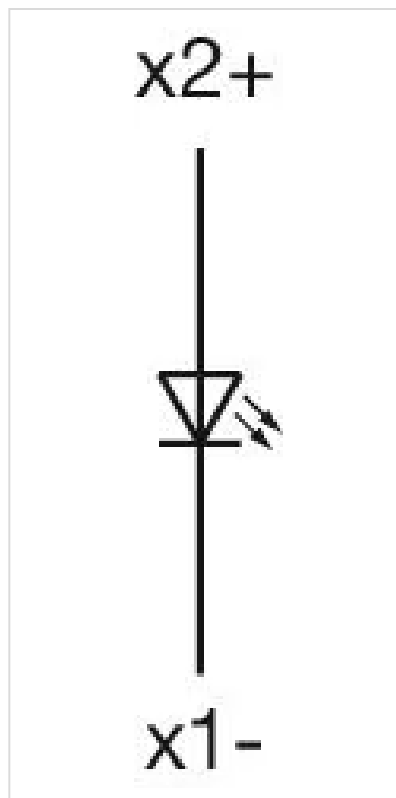
OTHER

Short Description: Actuator, Ø 29 mm, Round, Screw terminal

Housing colour: Grey

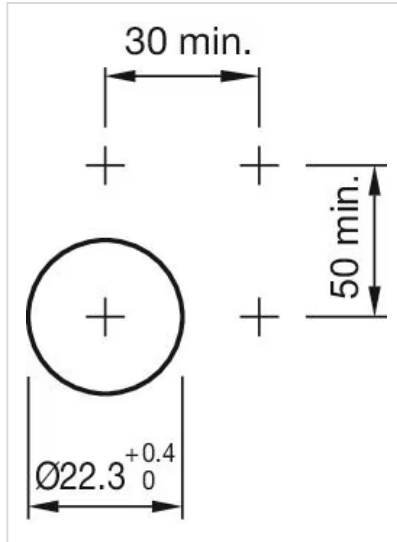
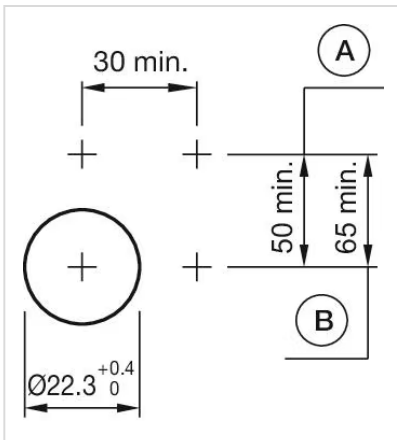
Housing material: Plastic

Wiring diagrams:

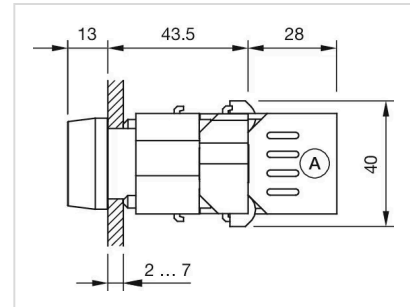
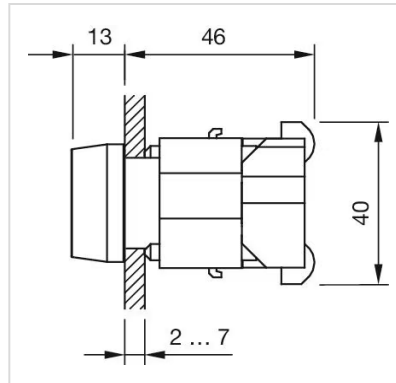


Mounting cut-outs:

A = Screw terminal
 B = Push-in terminal (PIT)



Dimension drawings:



A = Screw terminal