

# Actuator

704.003.6



<https://www.eao.com/component/704.003.6/en/ac...>

Your product:

---



## 704.003.6 Actuator

### FRONT

Front dimension:	Ø 29 mm
Front form:	Round
Front bezel colour:	Grey
Front bezel material:	Plastic

### MOUNTING

Design:	Raised
Mounting type:	Panel mounting

### OPERATING-/INDICATION PART

Lens colour:	Blue
Lens material:	Plastic
Lens shape:	Flush
Lens optics:	transparent
Marking plate colour:	Colourless
Marking plate optics:	transparent
Marking plate illumination:	illuminative

### ELECTRICAL CHARACTERISTICS

Standards:	The switches comply with the "Standards for low-voltage switching devices" DIN EN 60947-1
------------	---

### MECHANICAL CHARACTERISTICS

**Terminal:** Screw terminal

**Weight:** 0.037 kg

### AMBIENT CONDITION

**IP Protection:** IP65 front side

**Operating temperature:** – 40 °C ... + 55 °C

**Storage temperature:** – 40 °C ... + 85 °C

### CERTIFICATE

**REACH:** REACH compliant

**RoHS:** RoHS compliant

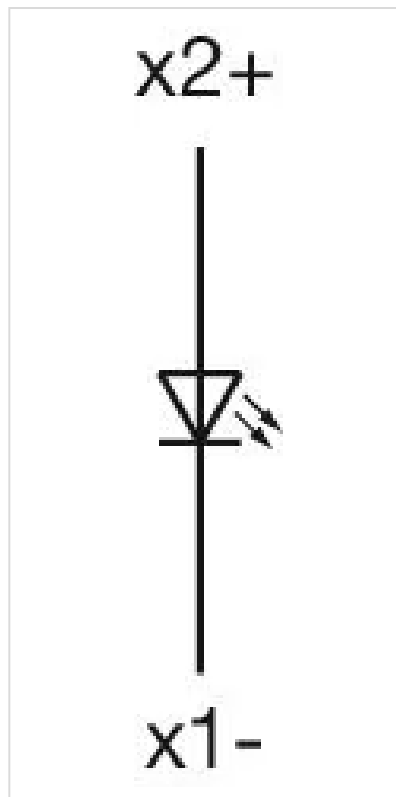
### OTHER

**Short Description:** Actuator, Ø 29 mm, Flush, Blue, Plastic, transparent, Round, Grey, Plastic, Screw terminal

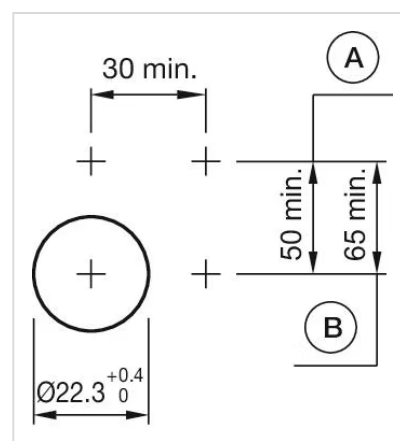
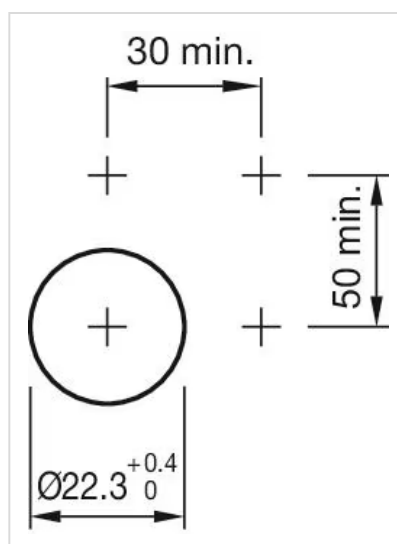
**Housing colour:** Grey

**Housing material:** Plastic

**Wiring diagrams:**

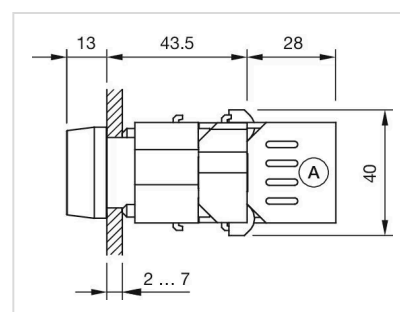
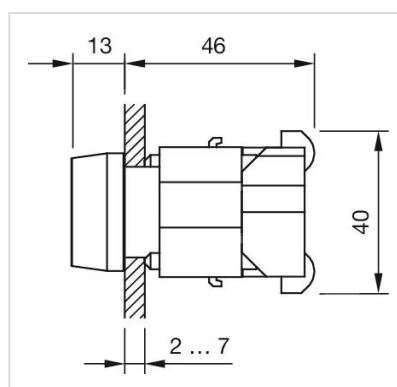


## Mounting cut-outs:



A = Screw terminal  
B = Push-in terminal (PIT)

## Dimension drawings:



A = Screw terminal