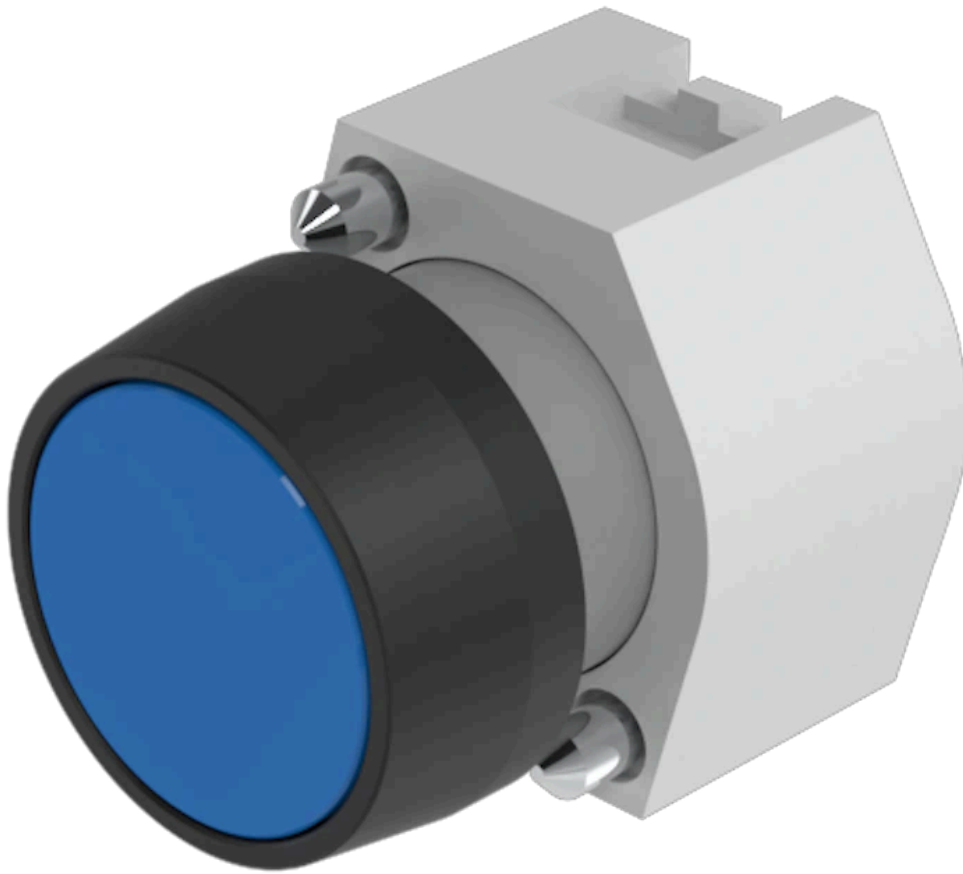


# Actuator

704.009.6



<https://www.eao.com/p/704.009.6>

Your product:

---



## 704.009.6 Actuator

### FRONT

|                       |         |
|-----------------------|---------|
| Front dimension:      | Ø 29 mm |
| Front form:           | Round   |
| Front bezel colour:   | Black   |
| Front bezel material: | Plastic |

### MOUNTING

|                |                |
|----------------|----------------|
| Design:        | Raised         |
| Mounting type: | Panel mounting |

### OPERATING-/INDICATION PART

|                    |                 |
|--------------------|-----------------|
| Lens colour:       | Blue            |
| Lens material:     | Plastic         |
| Lens illumination: | Non illuminated |
| Lens shape:        | Flush           |
| Lens optics:       | transparent     |

### ELECTRICAL CHARACTERISTICS

|            |   |
|------------|---|
| Standards: | The switches comply with the "Standards for low-voltage switching devices" DIN EN 60947-1 |
|------------|---|

### MECHANICAL CHARACTERISTICS

|                      |                             |
|----------------------|-----------------------------|
| Switching action:    | Momentary                   |
| Mechanical lifetime: | ≤3 Mil. cycles of operation |

|                          |                     |
|--------------------------|---------------------|
| <b>Operating force:</b>  | 8 N                 |
| <b>Operating Travel:</b> | ca. 5.8 mm ± 0.2 mm |
| <b>Weight:</b>           | 0.04 kg             |

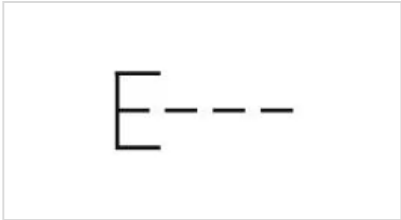
## AMBIENT CONDITION

|                               |                     |
|-------------------------------|---------------------|
| <b>IP Protection:</b>         | IP65 front side     |
| <b>Operating temperature:</b> | – 40 °C ... + 55 °C |
| <b>Storage temperature:</b>   | – 40 °C ... + 85 °C |

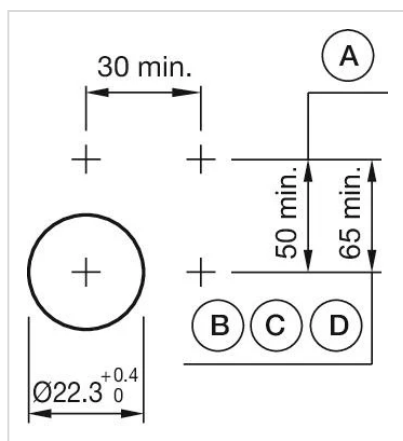
## CERTIFICATE

|               |                 |
|---------------|-----------------|
| <b>REACH:</b> | REACH compliant |
| <b>RoHS:</b>  | RoHS compliant  |

## OTHER

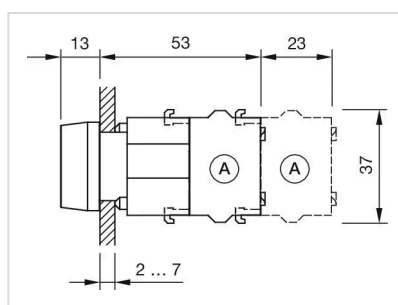
|   |  |
|---|--|
| <b>Short Description:</b>                 | Actuator, Ø 29 mm, Flush, Non illuminated, Blue, Plastic, transparent, Round, Black, Plastic, Momentary                            |
| <b>Housing colour:</b>                    | Grey   |
| <b>Housing material:</b>                  | Plastic  |
| <b>Product attributes:</b>                | Frontring with protective cover to be mounted with a torque of 0.4 Nm onto actuator  |
| <b>Hints:</b>                             | Frontring with protective cover to be mounted with a torque of 0.4 Nm onto actuator<br>Max. 3 switching elements can be clipped on |
| <b>max. number of switching elements:</b> | 3  |
| <b>Wiring diagrams:</b>                   |    |

**Mounting cut-outs:**



A = Screw terminal  
 B = Push-in terminal (PIT)  
 C = Plug-in terminal 6.3 mm x 0.8 mm  
 D = Double plug-in terminal 6.3 mm x 0.8 mm

# **Dimension drawings:**



A = Screw terminal