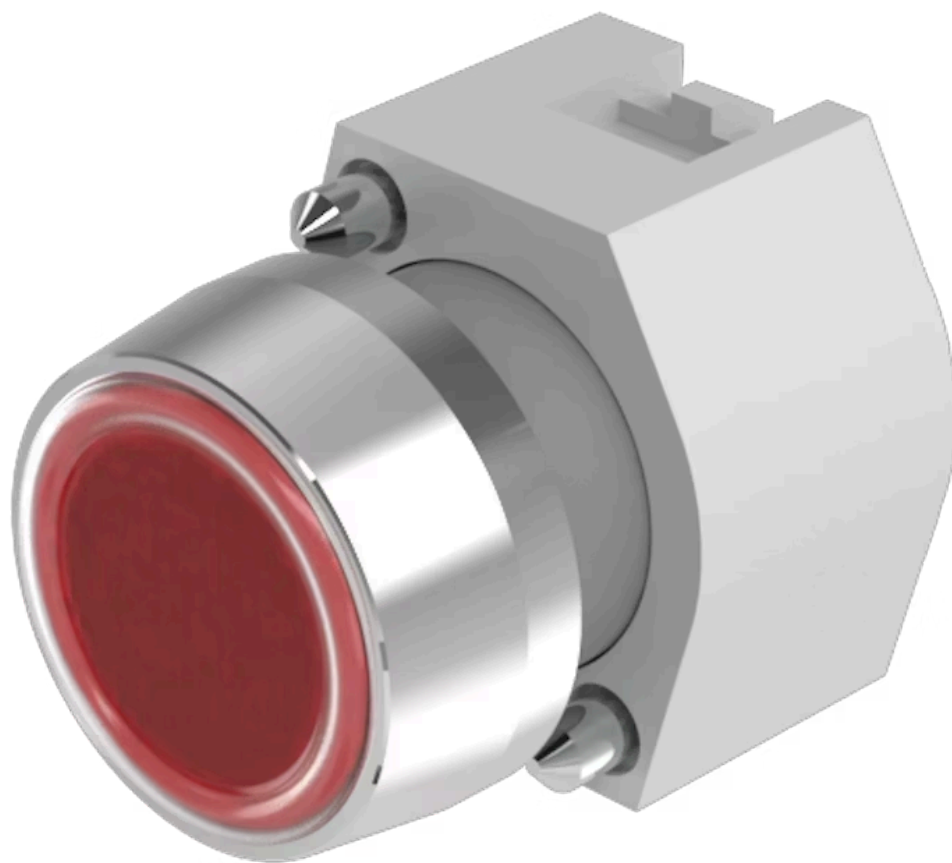


# Actuator

704.043.2



<https://www.eao.com/component/704.043.2/en/ac...>

Your product:

---



# 704.043.2 Actuator

## PRODUCT RANGE

**Product Status:** Phase-out

## FRONT

**Front dimension:** Ø 29 mm

**Front form:** Round

**Front bezel colour:** Nature

**Front bezel material:** Aluminium

**Front bezel shape:** With protective hood

## MOUNTING

**Design:** Raised

**Mounting type:** Panel mounting

## OPERATING-/INDICATION PART

**Lens colour:** Red

**Lens material:** Plastic

**Lens illumination:** Non illuminated

**Lens shape:** Flush

**Lens optics:** transparent

## ELECTRICAL CHARACTERISTICS

**Standards:** The switches comply with the "Standards for low-voltage switching devices" DIN EN 60947-1

## MECHANICAL CHARACTERISTICS

**Switching action:** Maintained

**Mechanical lifetime:** ≤3 Mil. cycles of operation

**Operating force:** 8 N

**Operating Travel:** ca. 5.8 mm ± 0.2 mm

**Weight:** 0.024 kg

## AMBIENT CONDITION

**IP Protection:** IP65 front side

**Operating temperature:** – 40 °C ... + 55 °C

**Storage temperature:** – 40 °C ... + 85 °C

## CERTIFICATE

**REACH:** REACH compliant

**RoHS:** RoHS compliant

## OTHER

**Short Description:** Actuator, Ø 29 mm, Flush, Non illuminated, Red, Plastic, transparent, Round, With protective hood, Nature, Aluminium, anodised, Maintained

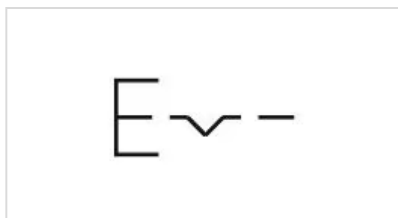
**Housing colour:** Grey

**Housing material:** Plastic

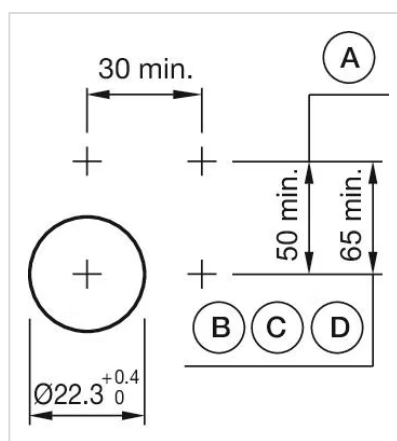
**Hints:** Frontring with protective cover to be mounted with a torque of 0.4 Nm onto actuator  
Max. 3 switching elements can be clipped on

**max. number of switching elements:** 3

**Wiring diagrams:**

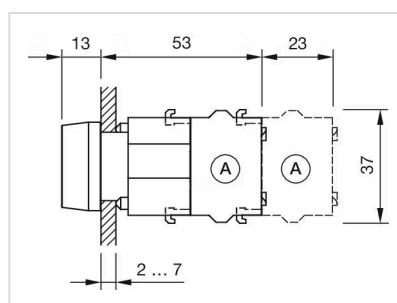


**Mounting cut-outs:**



A = Screw terminal  
B = Push-in terminal (PIT)  
C = Plug-in terminal 6.3 mm x 0.8 mm  
D = Double plug-in terminal 6.3 mm x 0.8 mm

**Dimension drawings:**



A = Screw terminal