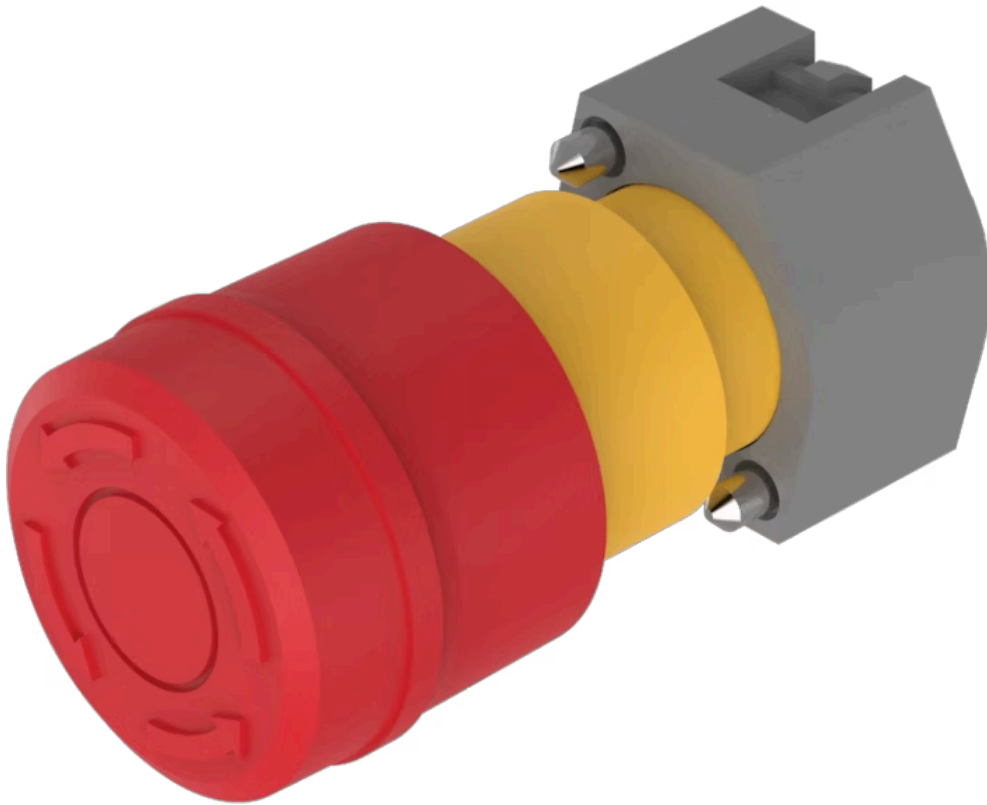


Actuator

704.064.2A



<https://www.eao.com/p/704.064.2A>

Your product:



704.064.2A Actuator

FRONT

Front dimension: Ø 37 mm

Front form: Round

MOUNTING

Design: Raised

Mounting type: Panel mounting

OPERATING-/INDICATION PART

Lens colour: Red

Lens material: Plastic

Lens illumination: Non illuminated

Lens shape: Mushroom-head

Lens optics: opaque

MECHANICAL CHARACTERISTICS

Switching action: Maintained

Release type: Twist to unlock

Mechanical lifetime: ≥50 000 cycles of operation

Operating force: 8 N

Operating Travel: ca. 5.8 mm ± 0.2 mm

Weight: 0.03 kg

AMBIENT CONDITION

Operating temperature: – 25 °C ... + 55 °C

Storage temperature: – 40 °C ... + 85 °C

CERTIFICATE

REACH: REACH compliant

RoHS: RoHS compliant

OTHER

Short Description: Actuator, Ø 37 mm, Mushroom-head, Non illuminated, Red, Plastic, opaque, Round, Maintained, Twist to unlock

Housing colour: Yellow

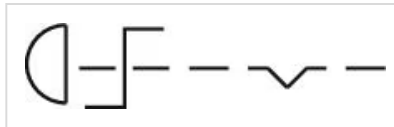
Housing material: Plastic

Marking: Arrows

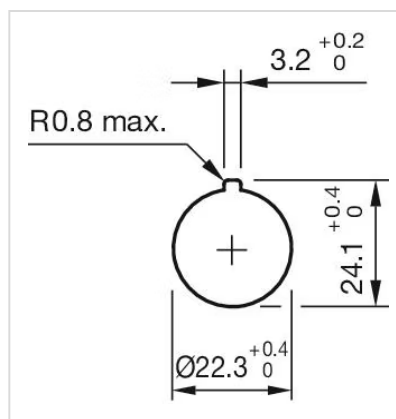
Product attributes: Twist to unlock anti-clockwise

Hints: Shaft yellow

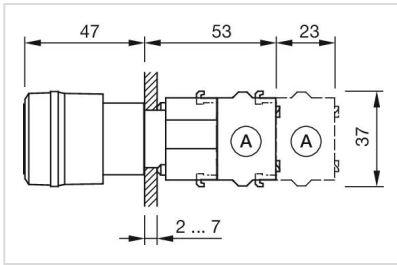
Wiring diagrams:



Mounting cut-outs:



Dimension drawings:



A = Screw terminal