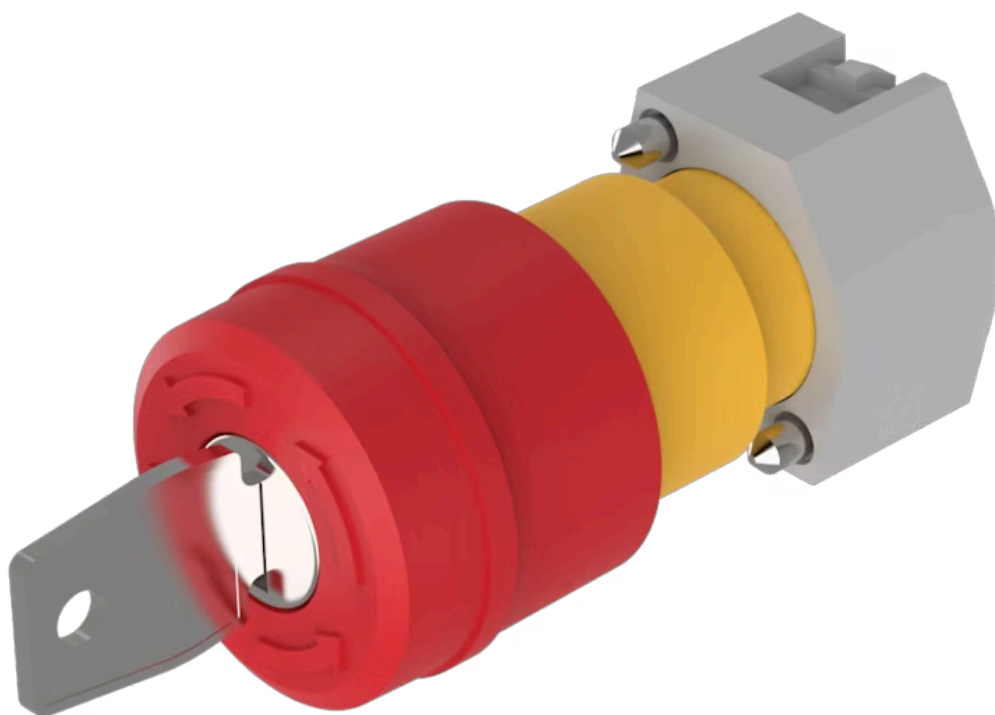


# Actuator

704.066.2



<https://www.eao.com/p/704.066.2>

Your product:

---



## 704.066.2 Actuator

### FRONT

**Front dimension:** Ø 37 mm

**Front form:** Round

### MOUNTING

**Design:** Raised

**Mounting type:** Panel mounting

### OPERATING-/INDICATION PART

**Lens colour:** Red

**Lens material:** Plastic

**Lens illumination:** Non illuminated

**Lens shape:** Mushroom-head

**Lens optics:** opaque

### ELECTRICAL CHARACTERISTICS

**Standards:** The switches comply with the “Standards for low-voltage switching devices” DIN EN 60947-1

### MECHANICAL CHARACTERISTICS

**Switching action:** Maintained

**Release type:** Key release to unlock

**Mechanical lifetime:** ≤50 000 cycles of operation

**Operating force:** 8 N

**Operating Travel:** ca. 5.8 mm ± 0.2 mm

**Weight:** 0.3 kg

## AMBIENT CONDITION

**IP Protection:** IP65 front side

**Operating temperature:** – 40 °C ... + 55 °C

**Storage temperature:** – 40 °C ... + 85 °C

## CERTIFICATE

**REACH:** REACH compliant

**RoHS:** RoHS compliant

## OTHER

**Short Description:** Actuator, Ø 37 mm, Mushroom-head, Non illuminated, Red, Plastic, opaque, Round, Maintained, Key release to unlock

**Housing colour:** Yellow

**Housing material:** Plastic

**Marking:** Arrows

**Product attributes:** Key to unlock clockwise

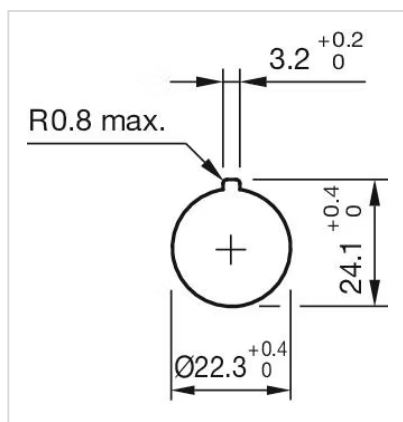
**Hints:** Shaft yellow

**max. number of switching elements:** 2

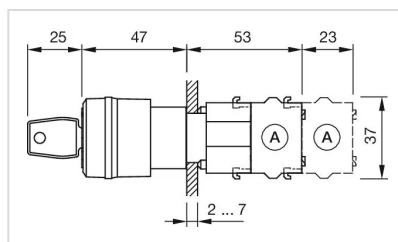
**Wiring diagrams:**



**Mounting cut-outs:**



**Dimension drawings:**



A = Screw terminal