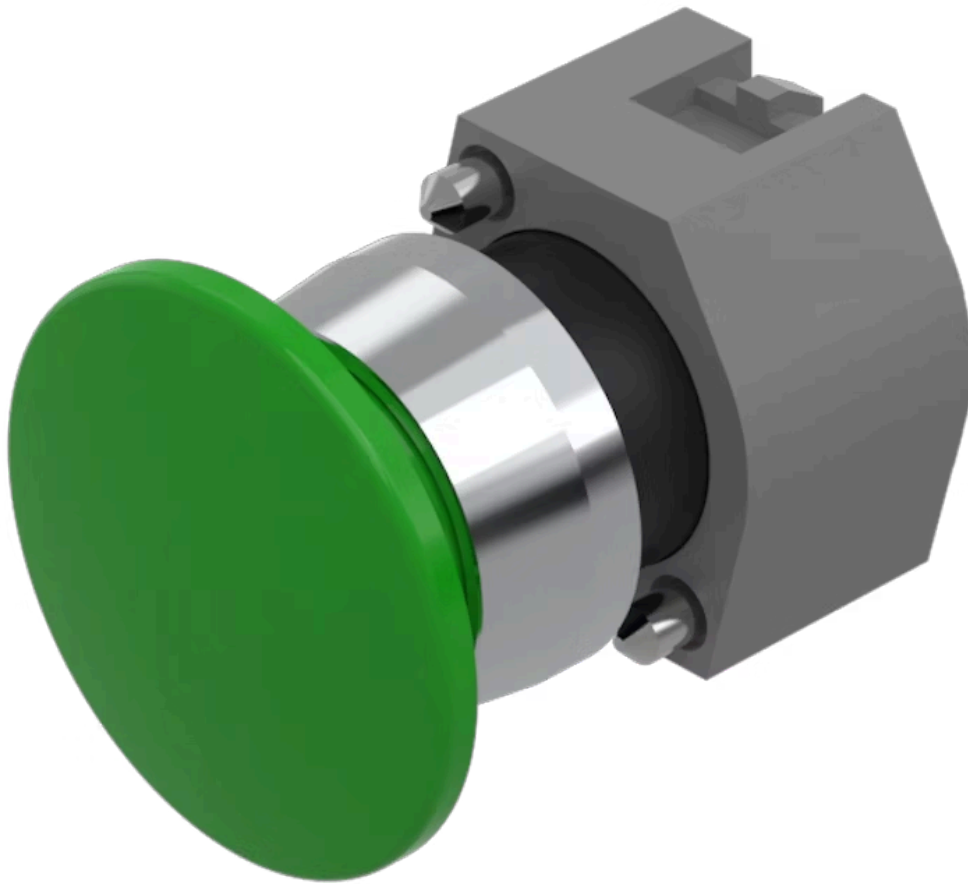


# Actuator

704.071.5



<https://www.eao.com/p/704.071.5>

Your product:

---



## 704.071.5 Actuator

### FRONT

Front dimension:	Ø 40 mm
Front form:	Round
Front bezel colour:	Nature
Front bezel material:	Aluminium
Front bezel shape:	With protective hood

### MOUNTING

Design:	Raised
Mounting type:	Panel mounting

### OPERATING-/INDICATION PART

Lens colour:	Green
Lens material:	Plastic
Lens illumination:	Non illuminated
Lens shape:	Mushroom-head
Lens optics:	opaque

### MECHANICAL CHARACTERISTICS

Switching action:	Momentary
Mechanical lifetime:	≤3 Mil. cycles of operation
Weight:	0.044 kg

## **CERTIFICATE**

**REACH:** REACH compliant

**RoHS:** RoHS compliant

## **OTHER**

**Short Description:**

Actuator, Ø 40 mm, Mushroom-head, Non illuminated, Green, Plastic, opaque, Round, With protective hood, Nature, Aluminium, anodised, Momentary

**Housing colour:**

Grey

**Housing material:**

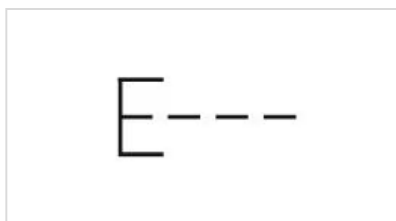
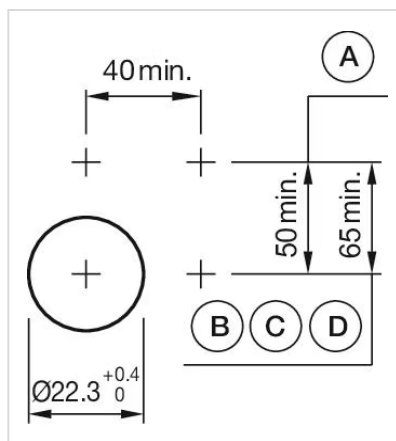
Plastic

**Hints:**

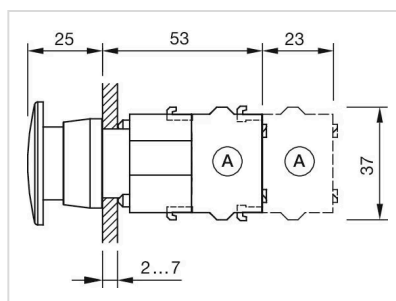
Max. 3 switching elements can be clipped on

**max. number of switching elements:**

3

**Wiring diagrams:****Mounting cut-outs:**

A = Screw terminal  
B = Push-in terminal (PIT)  
C = Plug-in terminal 6.3 mm x 0.8 mm  
D = Double plug-in terminal 6.3 mm x 0.8 mm

**Dimension drawings:**

A = Screw terminal