

Actuator

704.086.4



<https://www.eao.com/p/704.086.4>

Your product:



704.086.4 Actuator

FRONT

Front dimension:	Ø 40 mm
Front form:	Round
Front bezel colour:	Grey
Front bezel material:	Plastic

MOUNTING

Design:	Raised
Mounting type:	Panel mounting

OPERATING-/INDICATION PART

Lens colour:	Yellow
Lens material:	Plastic
Lens illumination:	Illuminated
Lens shape:	Mushroom-head
Lens optics:	opaque
Illumination colour:	Yellow

MECHANICAL CHARACTERISTICS

Terminal:	Screw terminal
Switching action:	Maintained
Mechanical lifetime:	≤3 Mil. cycles of operation
Weight:	0.044 kg

CERTIFICATE

REACH: REACH compliant

RoHS: RoHS compliant

OTHER

Short Description: Actuator, Ø 40 mm, Mushroom-head, Illuminated, Yellow, Plastic, opaque, Round, Grey, Plastic, Maintained, Screw terminal, Yellow

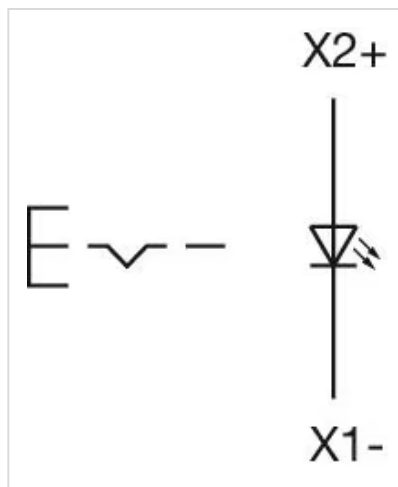
Housing colour: Grey

Housing material: Plastic

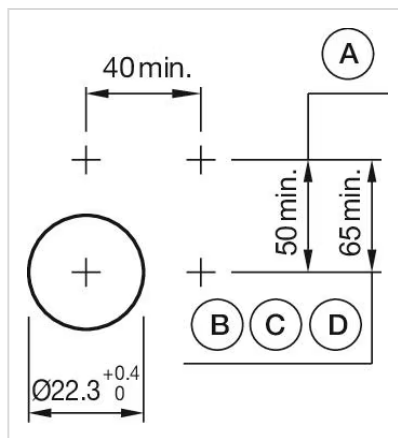
Hints: Max. 3 switching elements can be clipped on

max. number of switching elements: 3

Wiring diagrams:

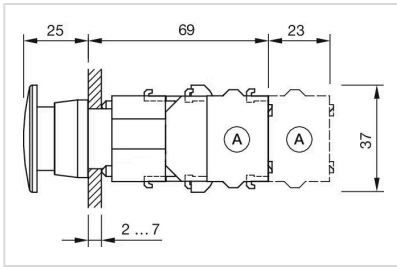


Mounting cut-outs:



A = Screw terminal
B = Push-in terminal (PIT)
C = Plug-in terminal 6.3 mm x 0.8 mm
D = Double plug-in terminal 6.3 mm x 0.8 mm

Dimension drawings:



A = Screw terminal