

# Actuator

704.095.0T28N



<https://www.eao.com/component/704.095.0T28N/e...>

Your product:

---



## 704.095.0T28N Actuator

### FRONT

Front dimension:	Ø 38 mm
Front form:	Round
Front bezel colour:	Nature
Front bezel material:	Stainless steel

### MOUNTING

Design:	Flush
Mounting cut-out:	Ø 33 mm
Mounting type:	Panel mounting

### MECHANICAL CHARACTERISTICS

Switching action:	Momentary - Rest - Momentary
Switching positions:	3 positions
Switching angle:	42° left / 42° right
Mechanical lifetime:	≤250 000 cycles of operation
Weight:	0.195 kg

### CERTIFICATE

REACH:	REACH compliant
RoHS:	RoHS compliant

### OTHER

**Short Description:**

Actuator, Ø 33 mm, Ø 38 mm, Round, Nature, Stainless steel, Momentary - Rest - Momentary

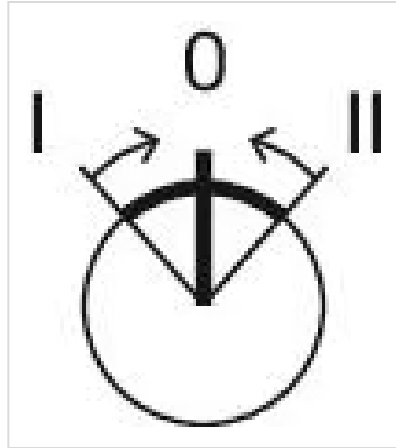
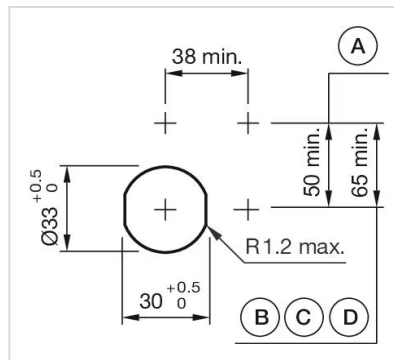
**Hints:**

Max. 2 switching elements can be clipped on

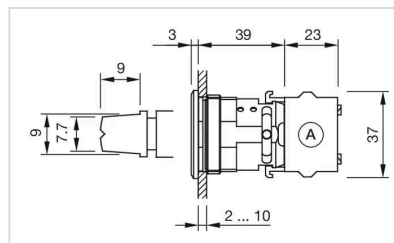
**max. number of switching elements:**

1

**Switching positions:**

**Wiring diagrams:****Mounting cut-outs:**

A = Screw terminal  
B = Push-in terminal (PIT)  
C = Plug-in terminal 6.3 mm x 0.8 mm  
D = Double plug-in terminal 6.3 mm x 0.8 mm

**Dimension drawings:**

A = Screw terminal