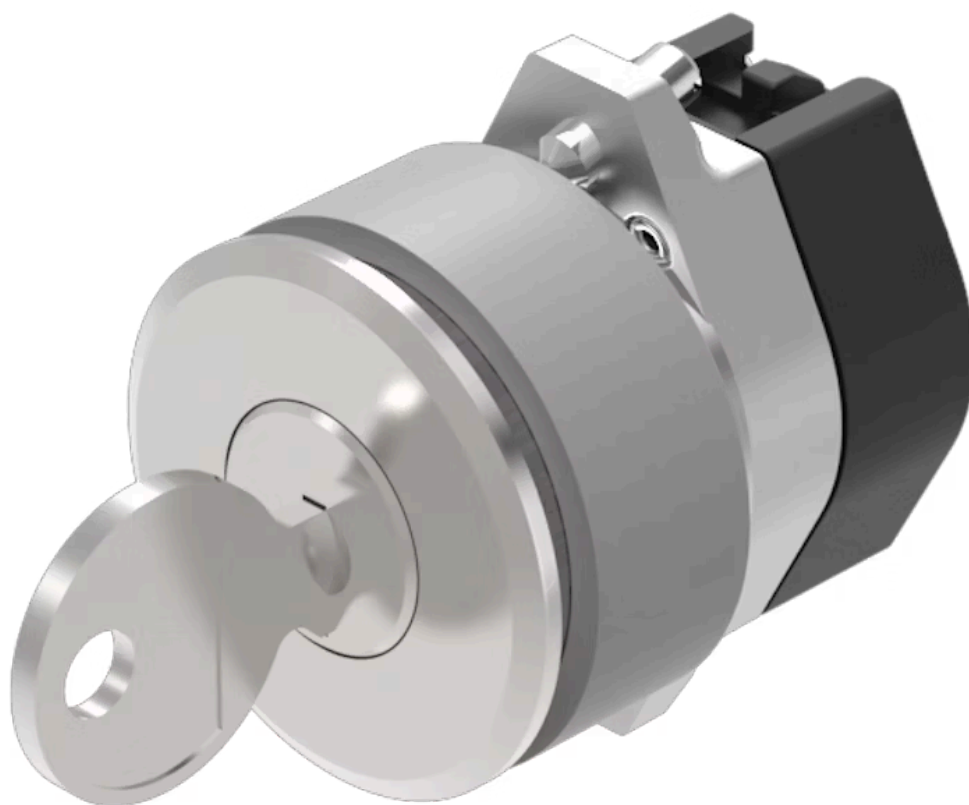


Actuator

704.123.018KN



<https://www.eao.com/p/704.123.018KN>

Your product:



704.123.018KN Actuator

FRONT

Front dimension:	Ø 35 mm
Front form:	Round
Front bezel colour:	Nature
Front bezel material:	Aluminium

MOUNTING

Design:	Flush
Mounting cut-out:	Ø 30.5 mm
Mounting type:	Panel mounting

ELECTRICAL CHARACTERISTICS

Switching rating:

MECHANICAL CHARACTERISTIC

Switching action:	Maintained - Rest (a)
Weight:	0.099 kg

CERTIFICATE

REACH:	REACH compliant
RoHS:	RoHS compliant

OTHER

Short Description:

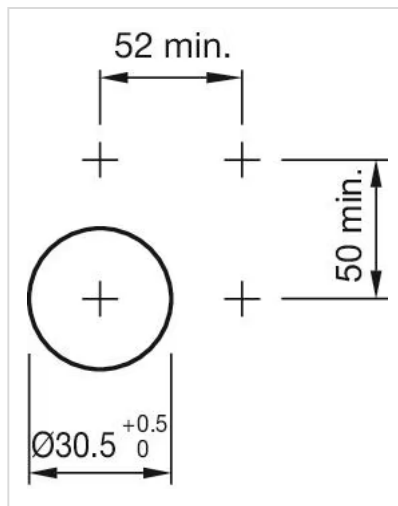
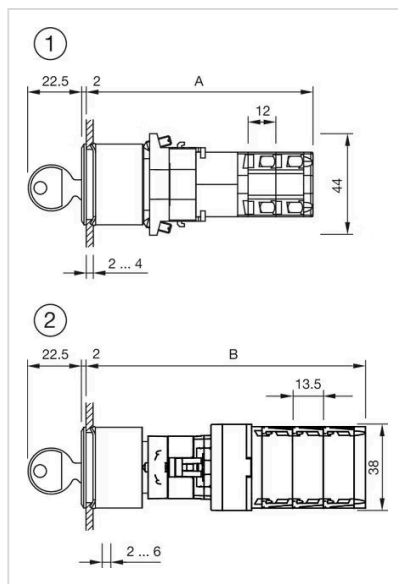
Actuator, Ø 30.5 mm, Ø 35 mm, Round, Nature, Aluminium, Maintained - Rest (a)

Hints:

The standard lock Ronis 251

max. number of switching elements:

1

Mounting cut-outs:**Dimension drawings:**

1 = Kraus & Naimer switching element
A = (Number of stages x 12) + 66.5 mm
2 = Santon switching element
B = (Number of stages x 13.5) + 65.5 mm