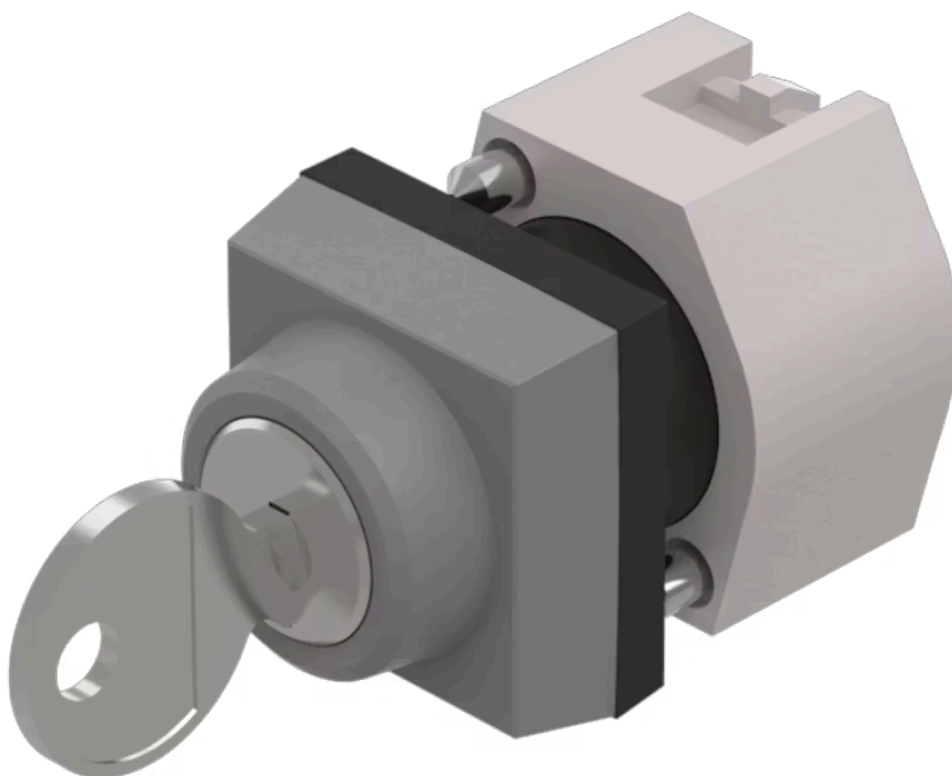


# Actuator

704.333.0



<https://www.eao.com/component/704.333.0/en/ac...>

Your product:

---



## 704.333.0 Actuator

### FRONT

Front dimension:	30 mm x 30 mm
Front form:	Square
Front bezel colour:	Grey
Front bezel material:	Plastic

### MOUNTING

Design:	Raised
Mounting type:	Panel mounting

### ELECTRICAL CHARACTERISTICS

Standards:	The switches comply with the "Standards for low-voltage switching devices" DIN EN 60947-1
------------	-------------------------------------------------------------------------------------------

### MECHANICAL CHARACTERISTICS

Switching action:	Maintained (a) - Rest (a) - Maintained (a)
Switching positions:	3 positions
Switching angle:	90° left / 90° right
Mechanical lifetime:	≤50 000 cycles of operation
Weight:	0.064 kg

### AMBIENT CONDITION

IP Protection:	IP65 front side
Operating temperature:	– 40 °C ... + 55 °C

**Storage temperature:** – 40 °C ... + 85 °C

## CERTIFICATE

**REACH:** REACH compliant

**RoHS:** RoHS compliant

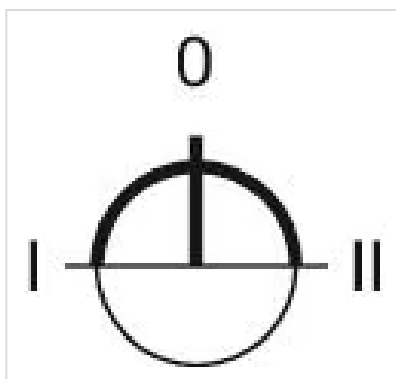
## OTHER

**Short Description:** Actuator, 30 mm x 30 mm, Square, Grey, Plastic, Maintained (a) - Rest (a) - Maintained (a)

**Hints:** The standard lock Ronis 251  
Further lock numbers on request  
Max. 3 switching elements can be clipped on

**max. number of switching elements:** 3

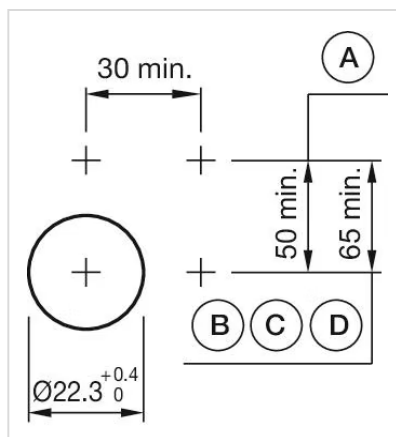
**Switching positions:**



**Wiring diagrams:**



**Mounting cut-outs:**



A = Screw terminal  
B = Push-in terminal (PIT)  
C = Plug-in terminal 6.3 mm x 0.8 mm  
D = Double plug-in terminal 6.3 mm x 0.8 mm

**Dimension drawings:**



A = Screw terminal