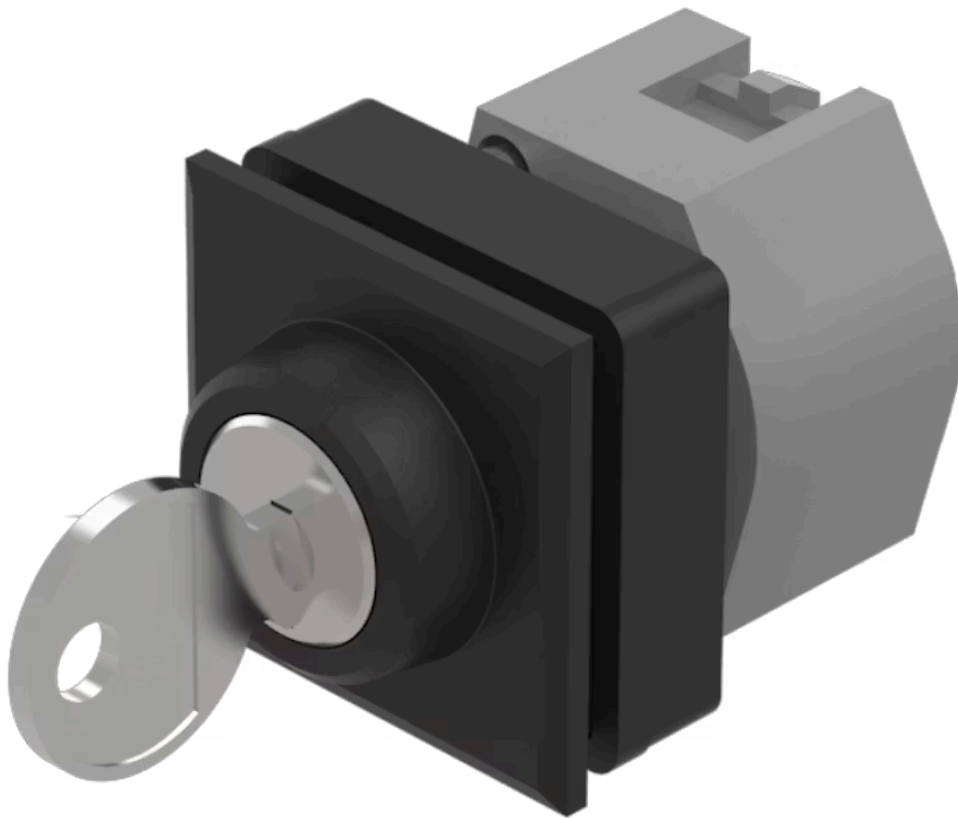


Actuator

704.342.000



<https://www.eao.com/component/704.342.000/en/...>

Your product:



704.342.000 Actuator

PRODUCT RANGE

Product Status: Phase-out

FRONT

Front dimension: 35 mm x 35 mm

Front form: Square

Front bezel colour: Black

Front bezel material: Plastic

MOUNTING

Design: Flush

Mounting cut-out: 30 mm x 30 mm

Mounting type: Panel mounting

ELECTRICAL CHARACTERISTICS

Standards: The switches comply with the "Standards for low-voltage switching devices" DIN EN 60947-1

MECHANICAL CHARACTERISTICS

| | |
|-----------------------------|-----------------------------|
| Switching action: | Rest (a) - Maintained (a) |
| Switching positions: | 2 positions |
| Switching angle: | 90° right / -45° ... +45° |
| Mechanical lifetime: | ≤50 000 cycles of operation |
| Weight: | 0.073 kg |

AMBIENT CONDITION

| | |
|-------------------------------|---------------------|
| IP Protection: | IP65 front side |
| Operating temperature: | – 40 °C ... + 55 °C |
| Storage temperature: | – 40 °C ... + 85 °C |

CERTIFICATE

| | |
|---------------|-----------------|
| REACH: | REACH compliant |
| RoHS: | RoHS compliant |

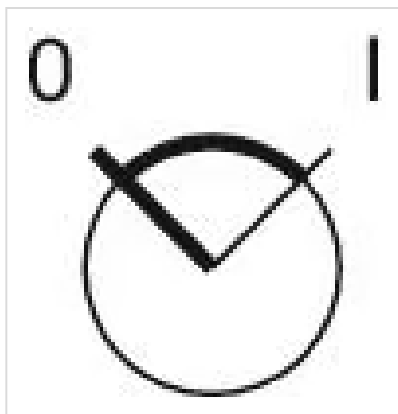
OTHER

| | |
|---------------------------|---|
| Short Description: | Actuator, 30 mm x 30 mm, 35 mm x 35 mm, Square, Black, Plastic, Rest (a) - Maintained (a) |
|---------------------------|---|

| | |
|---------------|---|
| Hints: | The standard lock Ronis 251 Further lock numbers on request Max. 3 switching elements can be clipped on |
|---------------|---|

| | |
|---|---|
| max. number of switching elements: | 3 |
|---|---|

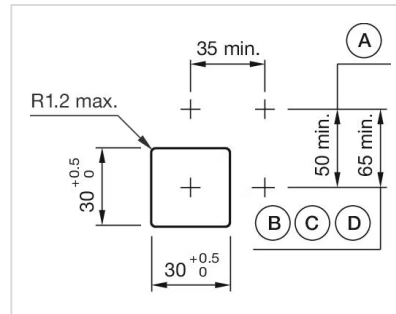
Switching positions:



Wiring diagrams:

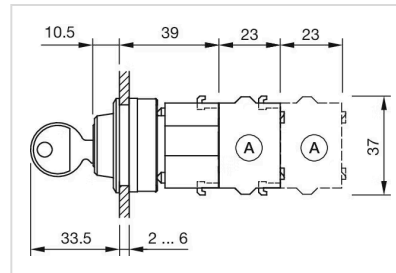


Mounting cut-outs:



A = Screw terminal
 B = Push-in terminal (PIT)
 C = Plug-in terminal 6.3 mm x 0.8 mm
 D = Double plug-in terminal 6.3 mm x 0.8 mm

Dimension drawings:



A = Screw terminal