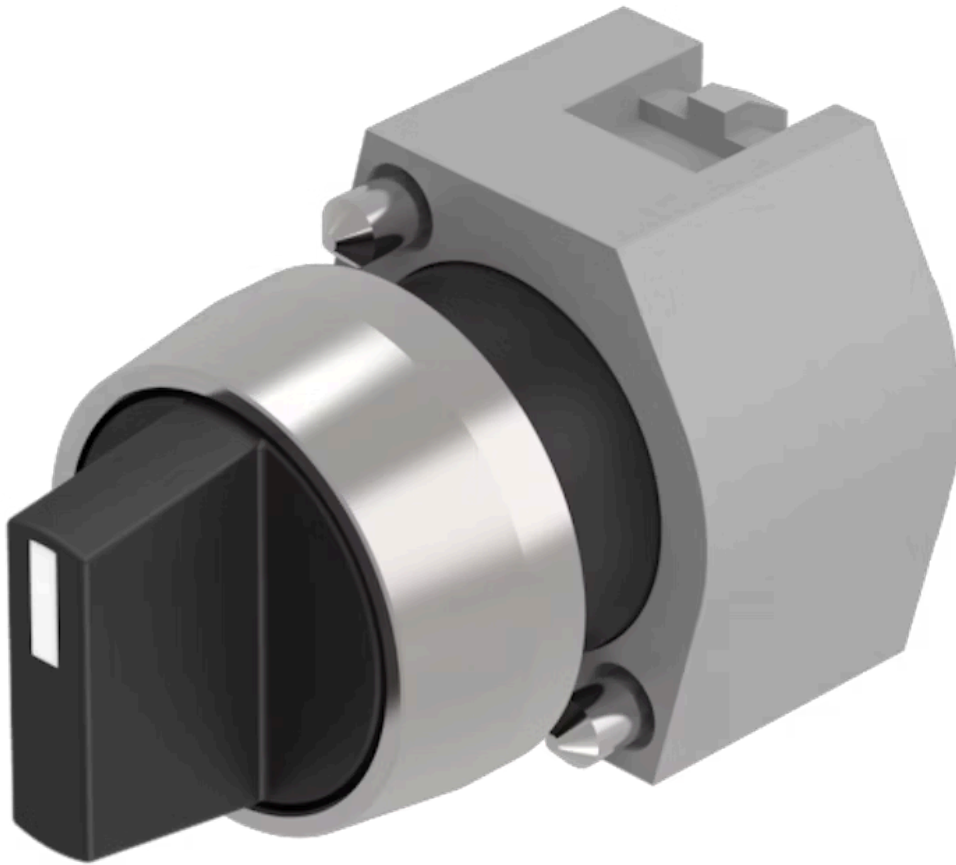


# Actuator

704.411.0



<https://eao.com/p/704.411.0>

Your product:

---



## 704.411.0 Actuator

### FRONT

|                              |           |
|------------------------------|-----------|
| <b>Front dimension:</b>      | Ø 29 mm   |
| <b>Front form:</b>           | round     |
| <b>Front bezel colour:</b>   | Nature    |
| <b>Front bezel material:</b> | Aluminium |

### MOUNTING

|                       |                |
|-----------------------|----------------|
| <b>Design:</b>        | raised         |
| <b>Mounting type:</b> | Panel mounting |

### OPERATING-/INDICATION PART

|                        |         |
|------------------------|---------|
| <b>Lever colour:</b>   | Black   |
| <b>Lever material:</b> | plastic |
| <b>Lever shape:</b>    | short   |

### ELECTRICAL CHARACTERISTICS

|                   |   |
|-------------------|---|
| <b>Standards:</b> | The switches comply with the "Standards for low-voltage switching devices" DIN EN 60947-1 |
|-------------------|---|

### MECHANICAL CHARACTERISTIC

|                             |                               |
|-----------------------------|-------------------------------|
| <b>Switching action:</b>    | Rest - Maintained             |
| <b>Switching positions:</b> | 2 positions                   |
| <b>Switching angle:</b>     | 90° right / -45° ... +45°     |
| <b>Mechanical lifetime:</b> | ≤2.5 Mio. cycles of operation |

**Weight:** 0.034 kg

### AMBIENT CONDITION

**IP Protection:** IP65 front side

**Operating temperature:** - 40 °C ... + 55 °C

**Storage temperature:** - 40 °C ... + 85 °C

### CERTIFICATE

**REACH:** REACH compliant

**RoHS:** RoHS compliant

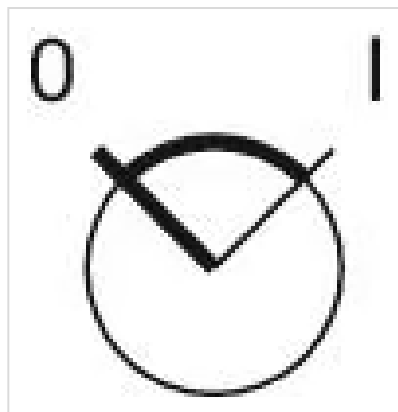
### OTHER

**Short Description:** Actuator, Ø 29 mm, non illuminative, Black, short, round, Nature, Aluminium, anodised, Rest - Maintained

**Hints:** Max. 3 switching elements can be clipped on

**max. number of switching elements:** 3

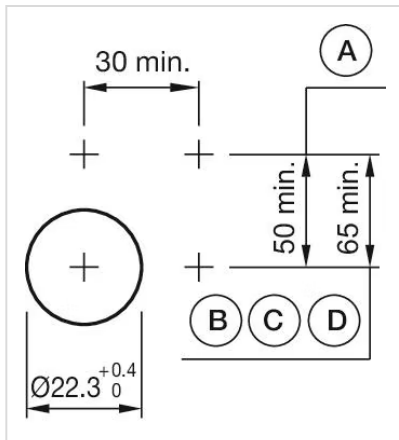
**Switching positions:**



**Wiring diagrams:**

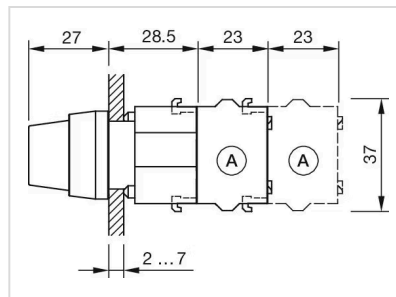


**Mounting cut-outs:**



A = Screw terminal  
 B = Push-in terminal (PIT)  
 C = Plug-in terminal 6.3 mm x 0.8 mm  
 D = Double plug-in terminal 6.3 mm x 0.8 mm

**Dimension drawings:**



A = Screw terminal