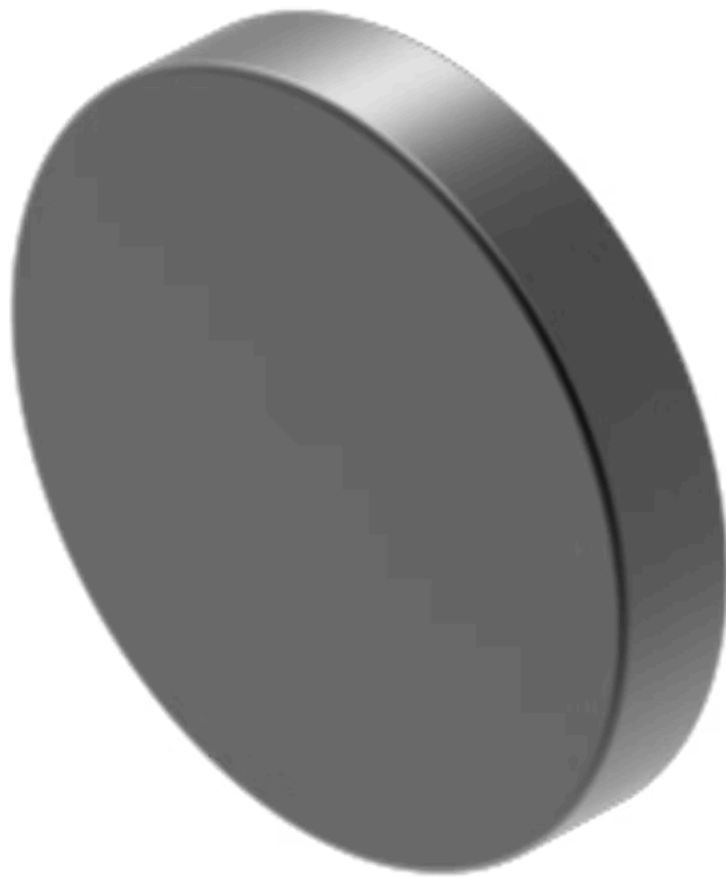


Lens

704.601.0



<https://eao.com/p/704.601.0>

Your product:



704.601.0 Lens

FRONT

Front form: round

OPERATING-/INDICATION PART

Lens colour: Black

Lens material: Aluminium

Lens illumination: non illuminative

Lens shape: flush

Lens optics: opaque

MECHANICAL CHARACTERISTIC

Weight: 0.001 kg

CERTIFICATE

REACH: REACH compliant

RoHS: RoHS compliant

OTHER

Short Description: Lens, Ø 23.7 mm, non illuminative, Black, flush, Aluminium

Dimension: Ø 23.7 mm

Internal size: Ø 20 mm

Hints: The colour of anodised aluminium parts can vary due to technical production reasons, To obtain IP65, it is necessary to use marking plate Part No.. 704.609.X