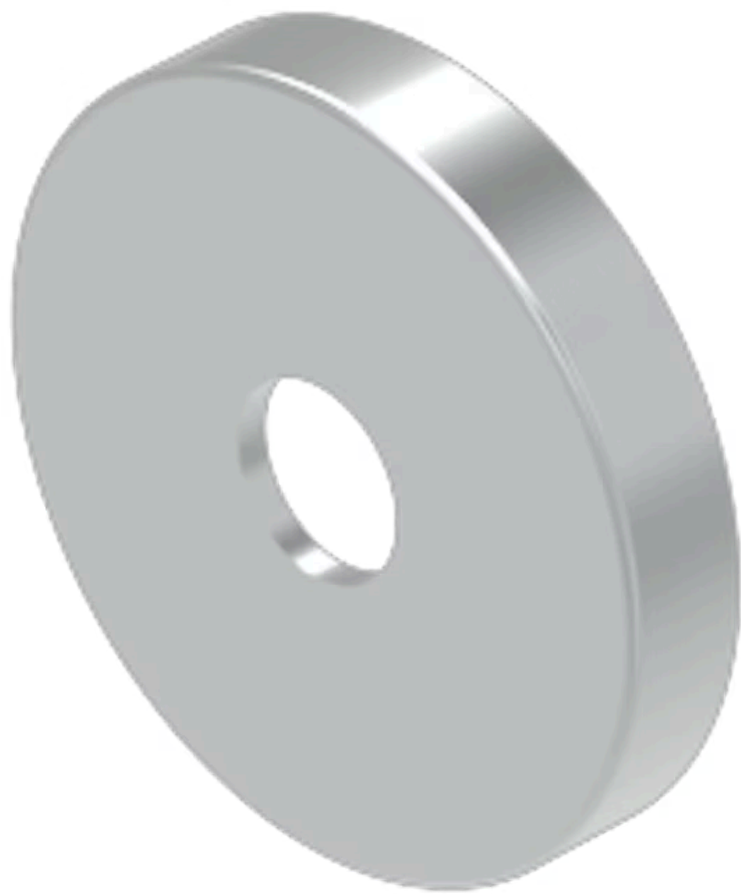


Lens

704.601.91



<https://www.eao.com/component/704.601.91/en/lens>

Your product:



704.601.91
Lens

FRONT

Front form: Round

OPERATING-/INDICATION PART

Lens colour: Nature

Lens material: Stainless steel

Lens illumination: Illuminated

Lens shape: Flush

Lens optics: opaque

Lens type: Level with front bezel

Marking plate illumination: illuminative

Shape of illumination: Dot

MECHANICAL CHARACTERISTICS

Weight: 0.001 kg

CERTIFICATE

REACH: REACH compliant

RoHS: RoHS compliant

OTHER

Short Description: Lens, Ø 23.7 mm, Illuminated, Nature, Flush, Stainless steel

Dimension: Ø 23.7 mm

Internal size:

Ø 20 mm

Hints:

To obtain IP65, it is necessary to use marking plate Part No.. 704.609.X