

# Actuator

704.631.1



<https://www.eao.com/p/704.631.1>

Your product:

---



## 704.631.1 Actuator

### FRONT

**Front form:** Round

### MOUNTING

**Mounting type:** Panel mounting

### OPERATING-/INDICATION PART

**Lens illumination:** Illuminated

### ELECTRICAL CHARACTERISTICS

**Standards:** The switches comply with the "Standards for low-voltage switching devices" DIN EN 60947-1

### MECHANICAL CHARACTERISTIC

**Switching action:** Momentary

**Mechanical lifetime:** ≤3 Mil. cycles of operation

**Operating force:** 8 N

**Operating Travel:** ca. 5.8 mm ± 0.2 mm

**Weight:** 0.009 kg

### AMBIENT CONDITION

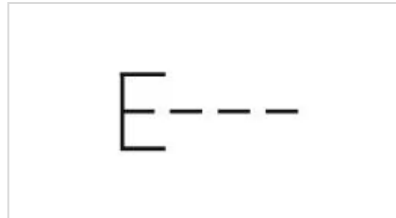
**IP Protection:** IP65 front side  
**Operating temperature:** - 40 °C ... + 55 °C  
**Storage temperature:** - 40 °C ... + 85 °C

### CERTIFICATE

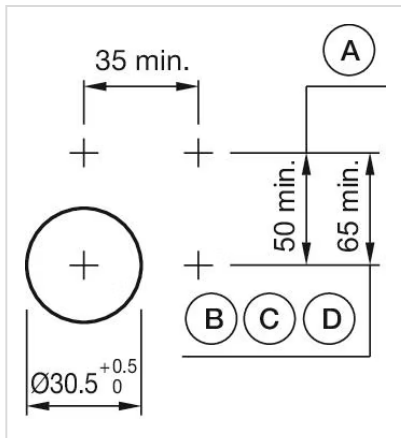
**REACH:** REACH compliant  
**RoHS:** RoHS compliant

### OTHER

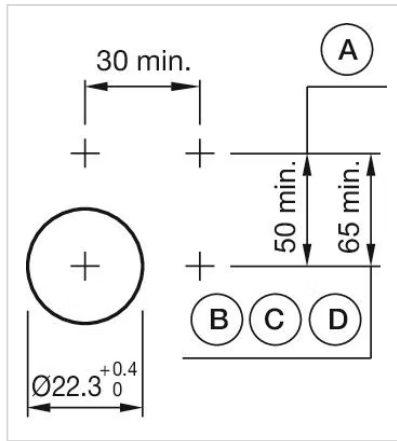
**Short Description:** Actuator, Illuminated, Round, Momentary  
**Housing colour:** Grey  
**Housing material:** Plastic  
**Hints:** Max. 3 switching elements can be clipped on  
**max. number of switching elements:** 3  
**Wiring diagrams:**



**Mounting cut-outs:**

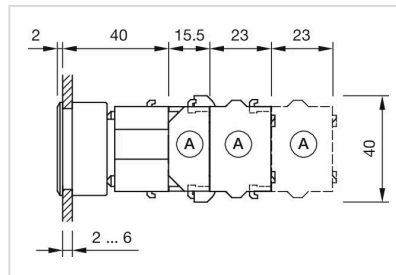


A = Screw terminal  
 B = Push-in terminal (PIT)  
 C = Plug-in terminal 6.3 mm x 0.8 mm  
 D = Double plug-in terminal 6.3 mm x 0.8 mm

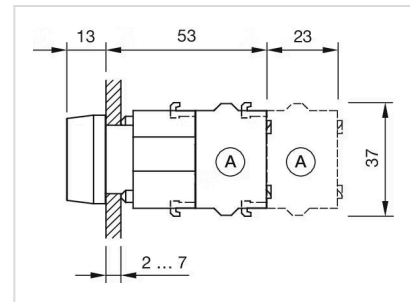


A = Screw terminal  
 B = Push-in terminal (PIT)  
 C = Plug-in terminal 6.3 mm x 0.8 mm  
 D = Double plug-in terminal 6.3 mm x 0.8 mm

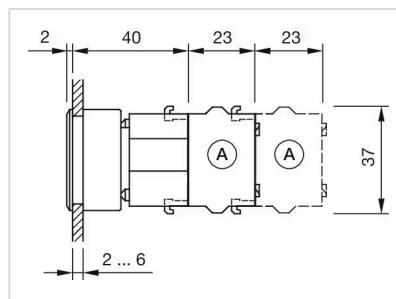
**Dimension drawings:**



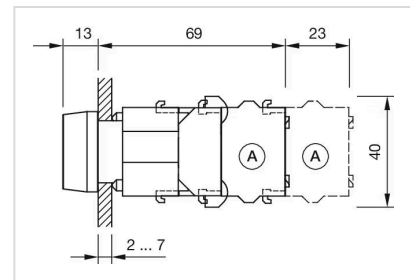
A = Screw terminal



A = Screw terminal



A = Screw terminal



A = Screw terminal