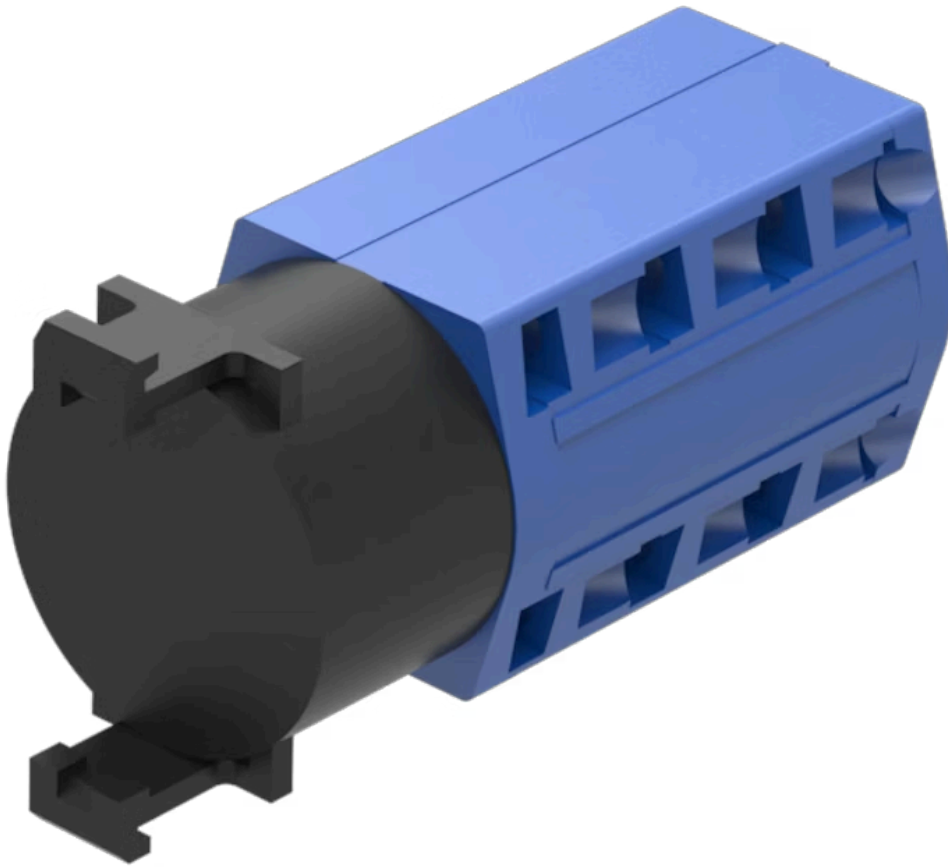


Rotary switching element

704.8A252



<https://www.eao.com/component/704.8A252/en/ro...>

Your product:



704.8A252

Rotary switching element

ELECTRICAL CHARACTERISTICS

| | |
|--|-----------------|
| Operating voltage: | 20 |
| Rated impulse withstand voltage Uimp: | 4 kV |
| Switching rating: | 440 V AC @ 10 A |

MECHANICAL CHARACTERISTICS

| | |
|-----------------------------|---|
| Terminal: | Screw terminal |
| Contact material: | Gold |
| Switching system: | Slow-make switching element |
| Switching positions: | 5 positions |
| Tightening torque: | Fixing nut max. 0.25 Nm |
| Wire cross section: | Single-core or stranded wire 2 x 1.5 mm ² (2 x AWG 14) Flexible wire 2 x 1.5 mm ² (2 x AWG 16) |
| Weight: | 0.12 kg |

AMBIENT CONDITION

| | |
|-------------------------------|---|
| Operating temperature: | Ambient Temperatures of Stages, open at 100 % I _u / I _{th} : 55 °C during 24 h with peaks up to 60 °C, enclosed at 100 % I _{th} : 35 °C during 24 h with peaks up to 40 °C |
|-------------------------------|---|

CERTIFICATE

| | |
|---------------|-----------------|
| REACH: | REACH compliant |
| RoHS: | RoHS compliant |

OTHER

Short Description:

Rotary switching element, Slow-make switching element, 440 V AC @ 10 A, Gold, Screw terminal

Hints:

Switching positions and functions of the rotary switching elements are being produced according to customer specifications. Please contact your local EAO Sales Office

Wiring diagrams: