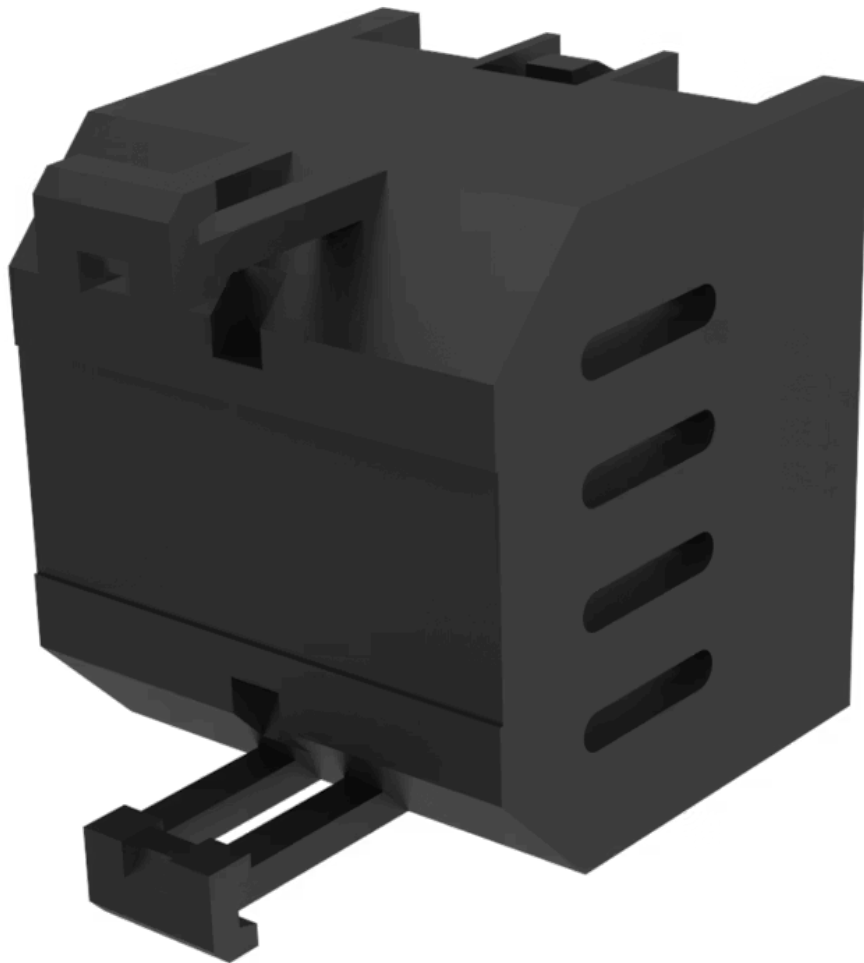


Resistor block

704.941.0



<https://www.eao.com/component/704.941.0/en/re...>

Your product:



704.941.0 Resistor block

ELECTRICAL CHARACTERISTICS

Forward voltage:

Operating voltage:

130 - 230 V AC

MECHANICAL CHARACTERISTICS

Terminal:

Screw terminal

Weight:

0.017 kg

OTHER

Short Description:

Resistor block, Plastic, Screw terminal, 130 - 230 V AC

Titel Accessory:

Resistor block

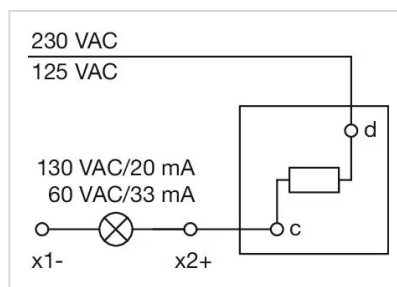
Material:

Plastic

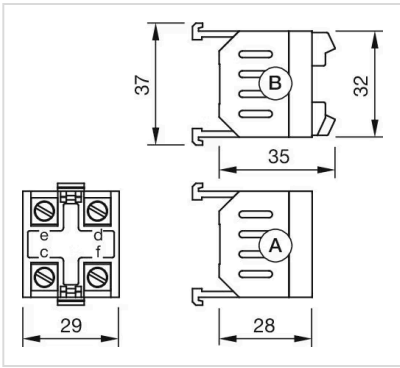
Product attributes:

Lamp voltage/-current 130 V, 20 mA

Wiring diagrams:



Dimension drawings:



A = Screw terminal
Push-in terminal (PIT)